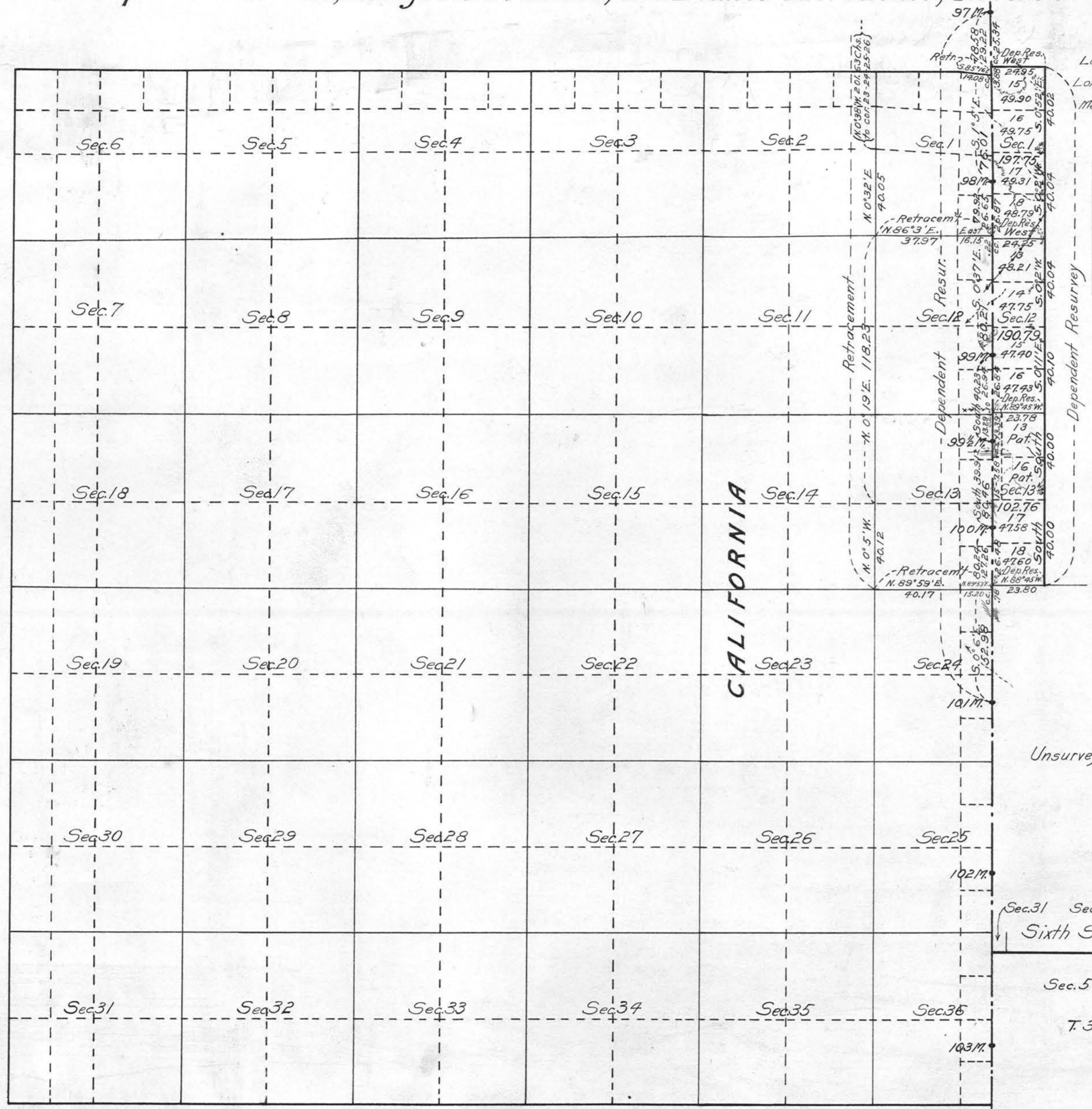


Supplemental Plat of Sections 1, 12 and 13
Township No. 31 North, Range No. 17 East, Mt. Diablo Meridian, Nevada



Latitude 40° 35' W.
Longitude 119° 59' 30" W.
Mean Magnetic Declination 19° 40' E.

| ENTRY CONFORMING TO LINES OF RESURVEY WITH CHANGED DESCRIPTION | | | | | | | | | |
|--|---|---|-----|---------|----------|---|---|-----|---------|
| ORIGINAL SURVEY | | | | | RESURVEY | | | | |
| Stn | T | R | Sec | Subdiv. | Stn | T | R | Sec | Subdiv. |
| | | | | | | | | | |
| | | | | | | | | | |
| | | | | | | | | | |
| | | | | | | | | | |
| | | | | | | | | | |

NOTE

This resurvey and plat was made for the purpose of determining the intersection of the section lines with the present California-Nevada Boundary in order that the legal subdivisions made fractional by said boundary may be given a proper designation with area in the State of Nevada.

Patented Lands contiguous to the state boundary were not computed.

| Surveys Designated | By Whom Surveyed | Group No. | Group Date | Amount of Surveys | | | When Surveyed | |
|-------------------------|------------------|-----------------|----------------|-------------------|------|------|---------------|---------------|
| | | | | Mls. | chs. | lks. | Begun | Completed |
| Cal.-Nev. Bdy-Dep. Res. | Emil Voigt | 35 Cal. | March 14, 1916 | 3 | 78 | 88 | July 20, 1918 | Aug. 26, 1918 |
| North " " | " | U.S. Transitman | " | 0 | 24 | 95 | Aug. 28, 1918 | Aug. 28, 1918 |
| North " - Retr't | " | " | " | 0 | 14 | 8 | Aug. 24, 1918 | Aug. 24, 1918 |
| East " - Dep. Res. | " | " | " | 3 | 0 | 20 | July 26, 1918 | Aug. 29, 1918 |
| Subdivisions - " | " | " | " | 0 | 71 | 83 | July 26, 1918 | Aug. 29, 1918 |
| Subdivisions - Retr't | " | " | " | 4 | 25 | 97 | Aug. 15, 1918 | Aug. 27, 1918 |
| | | | | | | | | |

The above supplemental plat of Sections 1, 12 and 13 Township No. 31 North, Range No. 17 East of the Mt. Diablo Meridian Nevada is strictly conformable to the field notes of the survey thereof on file in this office, which have been examined and approved.

U.S. Surveyor General's Office,
Reno, Nevada, March 18, 1920
and
San Francisco, California,

John B. Sullivan
U.S. Surveyor General for Nevada.
Eric H. Moore
U.S. Surveyor General for California.