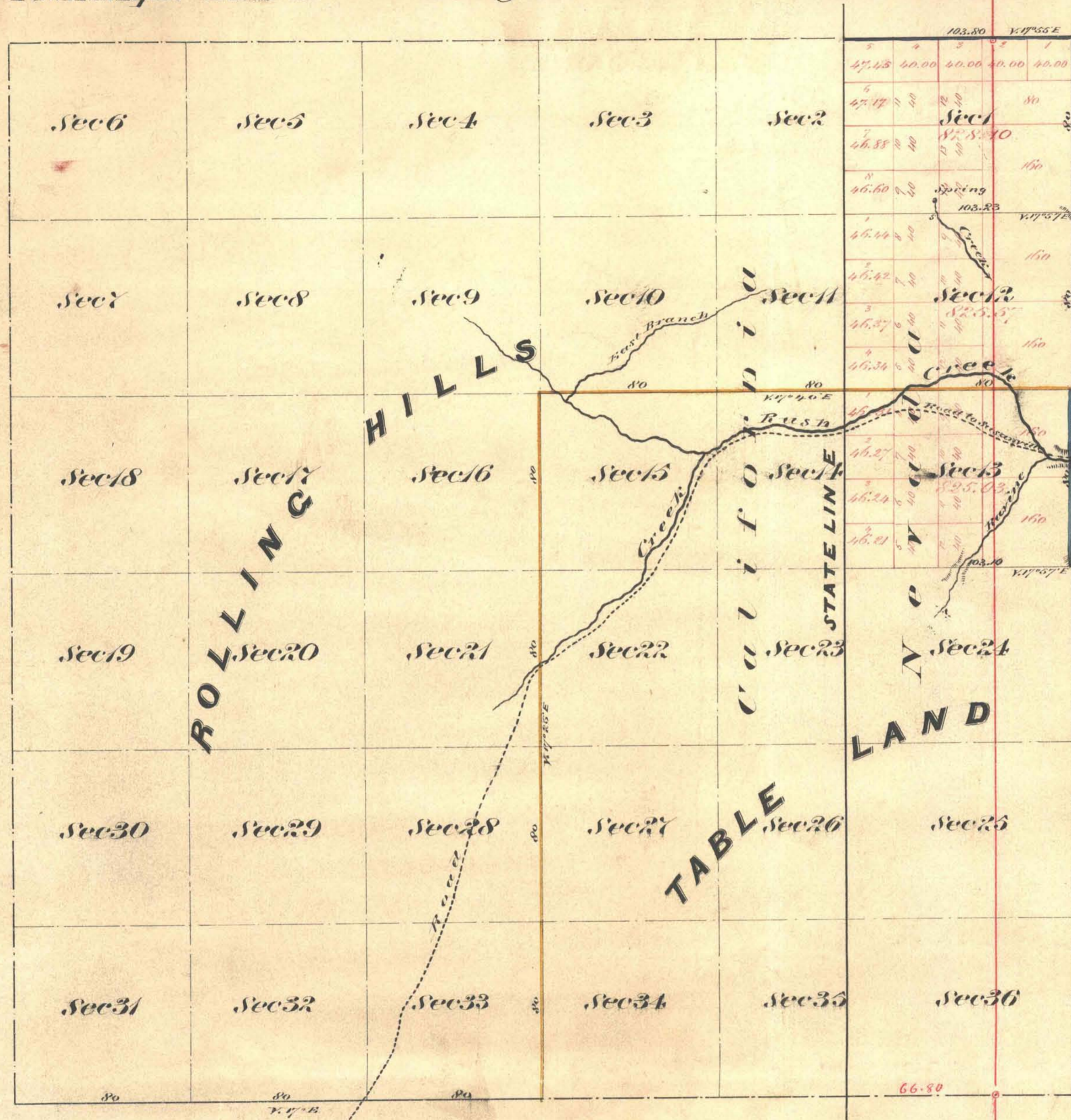


Township N^o 31 North

Range N^o 17 East

Mount Diablo Meridian



Nevada

Aggregate Area of Public Land (Surveyed)	3,478.70 Acres
Estimated " Mountains unsurveyed	2,574.40 "
Aggregate	4,953.10 "

California

Estimated Area of Mountain Land (unsurveyed)	18,076.40 Acres
Total Area of Township Nevada	4,953.10 "
Aggregate	23,027.50 "

Commenced August 19th 1870
 Completed " " "

Survey Designation	By Whom Surveyed	Date of Contract	Amount of Survey Dols. Cts. Cts.	When Surveyed
South and East Boundary of Twp	E. H. Dyer	July 17 th 1866	5. 00. 00	1866
Subdivision Lines (Office) (Yellow)	" " "	" " "	7. 00. 00	"
Township Lines (Blue)	A. J. Hatch & H. Eaton	August 15 th 1870	2. 23. 80	1870
Subdivision Lines	" " " "	" " "	2. 46. 33	August 1870

36

The above map of Township N31 North Range N17 East Mount Diablo Meridian is strictly conformable to the field notes of the surveys thereof on file in this office, which have been examined and approved
 U. S. Surveyor General's Office
 Virginia City Nevada
 November 9th 1870

E. S. Davis

U. S. Surveyor General Nevada

T 31 N. R 17 E. VD