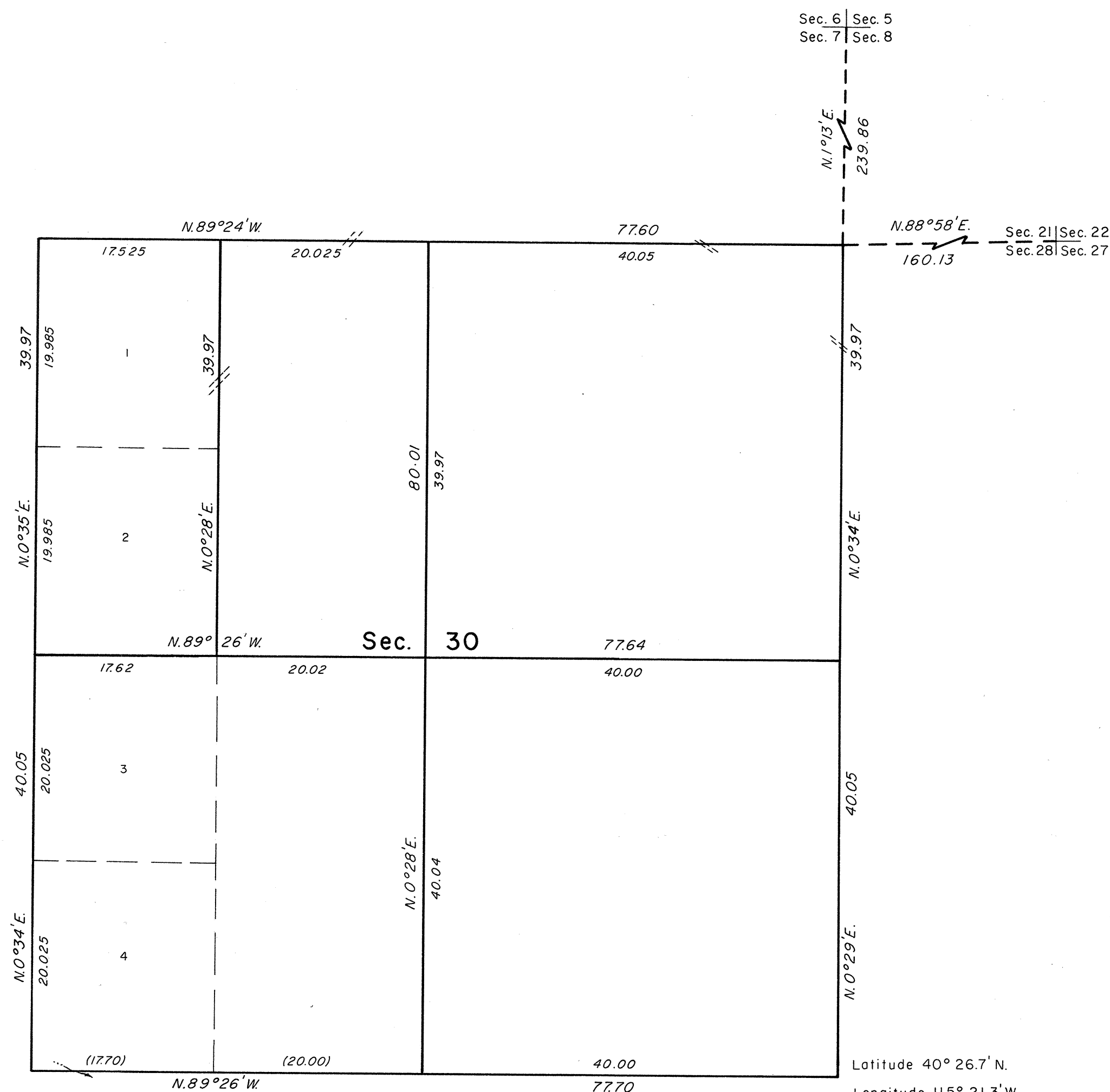


10:00 AM Nov. 20, 1980

TOWNSHIP 30 NORTH, RANGE 59 EAST, OF THE MOUNT DIABLO MERIDIAN, NEVADA

DEPENDENT RESURVEY AND SUBDIVISION



A history of surveys is contained in the field notes.

This plat represents the dependent resurvey of a portion of the subdivisional lines, designed to restore the corners in their true original locations according to the best available evidence, and the subdivision of section 30, T. 30 N., R. 59 E., Mount Diablo Meridian, Nevada.

A portion of the west boundary was concurrently resurveyed in T. 30 N., R. 58 E., of this assignment.

The lottings and areas are as shown on the plat approved March 29, 1870.

Survey executed by Terrence O. Nickerson, Cadastral Surveyor, beginning April 28, 1976, and completed May 17, 1976, pursuant to Special Instructions dated March 30, 1976, for Group No. 536, Nevada.

UNITED STATES DEPARTMENT OF THE INTERIOR
BUREAU OF LAND MANAGEMENT
Denver, Colorado October 21, 1980

This plat is strictly conformable to the approved field notes, and the survey, having been correctly executed in accordance with the requirements of law and the regulations of this Bureau, is hereby accepted.

For the Director

Alma S. Hudd
Acting Chief, Cadastral Survey
Examination and Approval Staff

