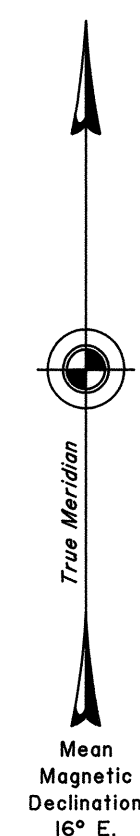
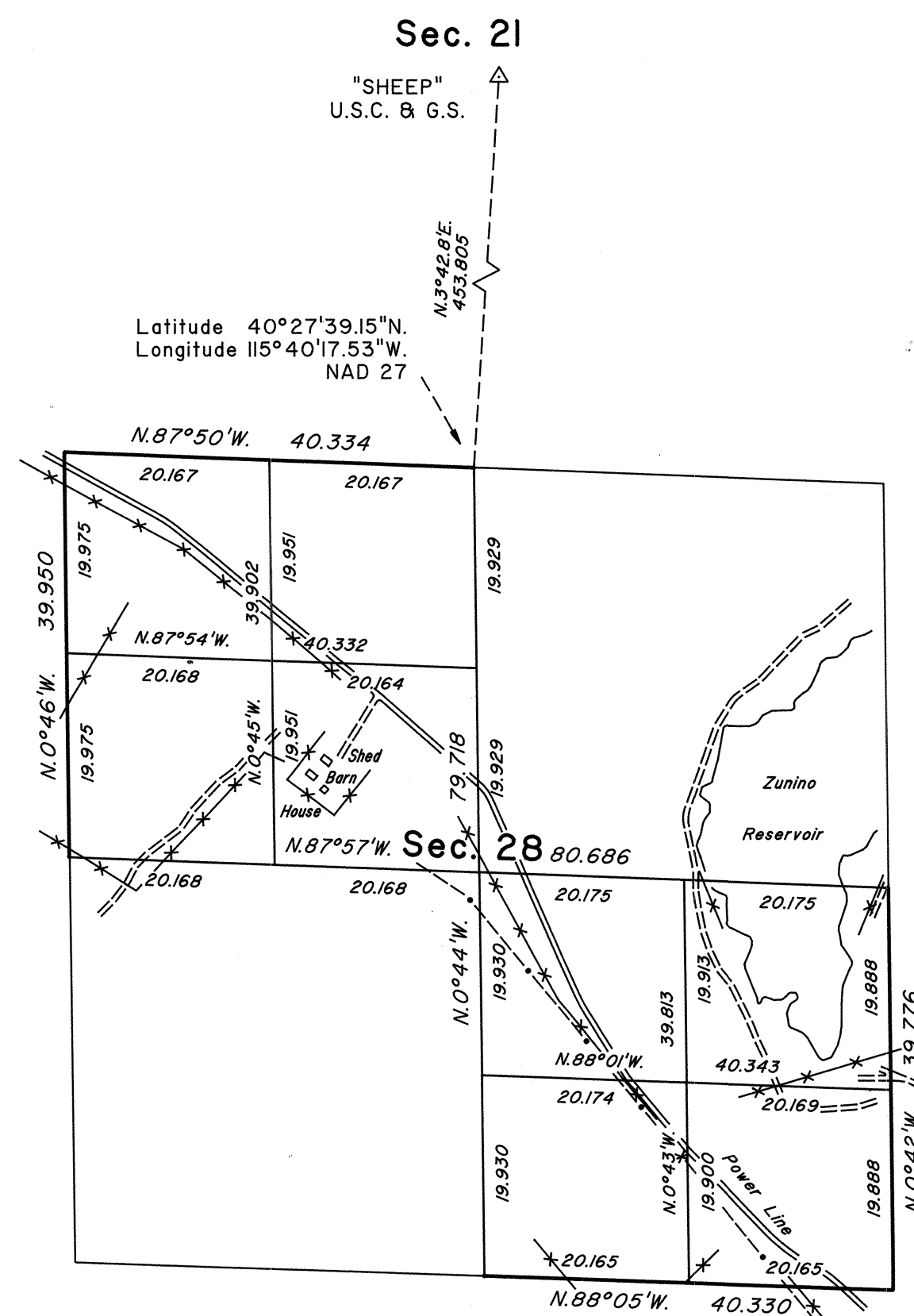


TOWNSHIP 30 NORTH, RANGE 56 EAST, OF THE MOUNT DIABLO MERIDIAN, NEVADA

DEPENDENT RESURVEY AND SUBDIVISION OF SECTION 28

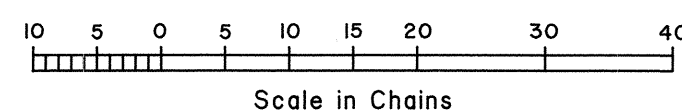


Sec. 29



Sec. 27

Sec. 33



A history of surveys is contained in the field notes.

This plat represents the dependent resurvey of a portion of the subdivisional lines designed to restore the corners in their true original locations according to the best available evidence, and the subdivision of section 28, Township 30 North, Range 56 East, Mount Diablo Meridian, Nevada.

The areas are as shown on the plat approved October 14, 1874.

For those surveyed lines not showing bearings and distances, refer to the official 1989 survey.

Survey executed by Robert A. Pratt, Cadastral Surveyor, beginning June 29, 1992, and completed July 6, 1992, pursuant to Special Instructions dated June 12, 1992, for Group No. 724, Nevada.

UNITED STATES DEPARTMENT OF THE INTERIOR
BUREAU OF LAND MANAGEMENT

Reno, Nevada December 30, 1993

This plat is strictly conformable to the approved field notes, and the survey, having been correctly executed in accordance with the requirements of law and the regulations of this Bureau, is hereby accepted.

For the Director

John S. Parnish

Chief Cadastral Surveyor, Nevada