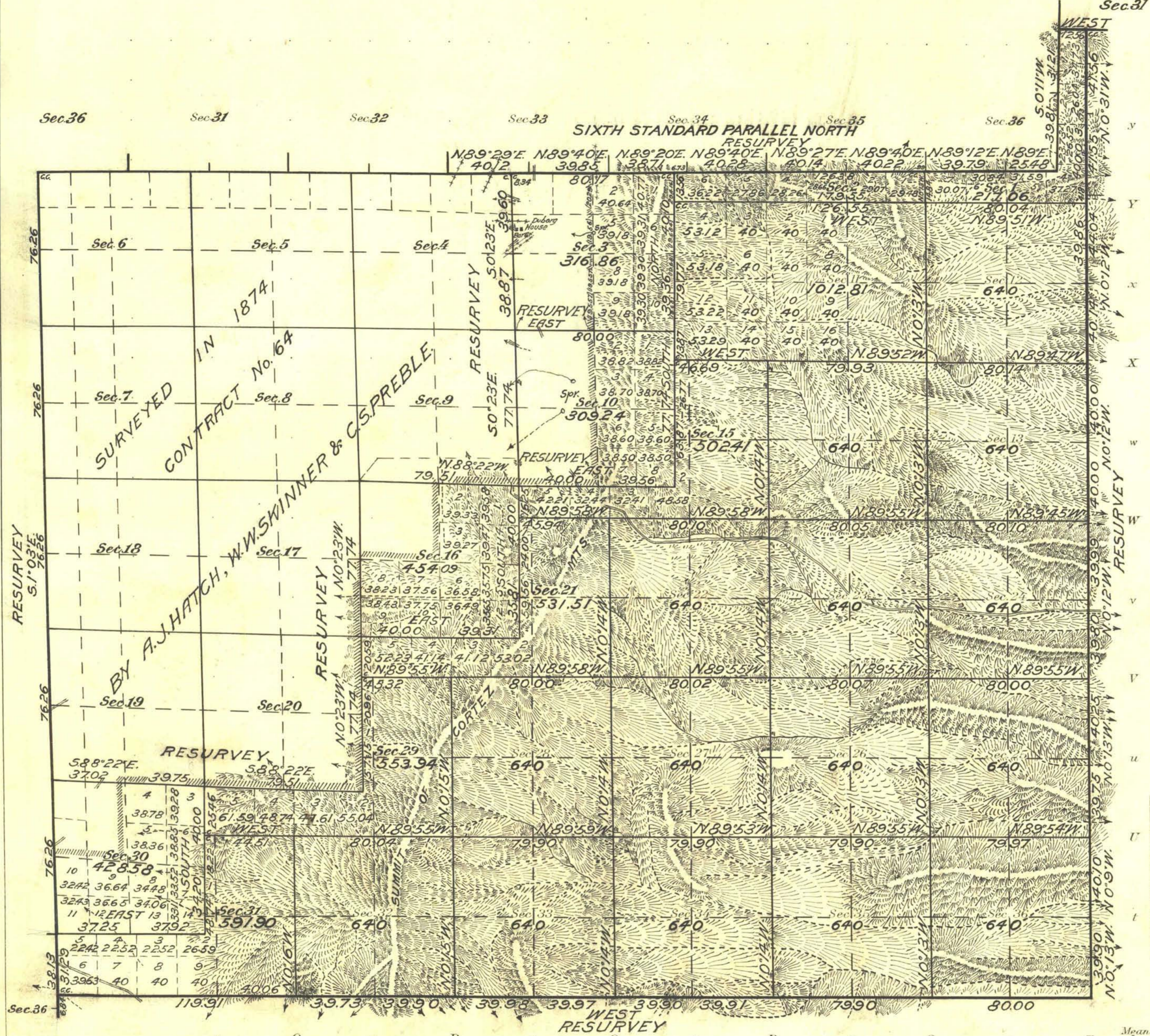


Township No 30 North Range No 51 East Mt Diablo Meridian, Nevada.

Survey Accepted September 25, 1917  
G.L.O.

G f F e E d D e C b B a A



Areas in Acres	
Public Land	14697.95
Indian Reservation	
Indian Allotments	
Mineral Claims	
Water Surface	
<b>Total Area</b>	<b>14697.95</b>

Scale 40 Chains to an inch  
 Mean Magnetic Declination 18° 25' East  
 Longitude 116° 11' W.  
 Latitude 40° 24' N.

Surveys Designated	By Whom Surveyed	Group			When Surveyed	
		No.	Date of Instructions	Amount of Surveys Mls. chs. fks.	When Surveyed Begun Completed	
6th St. Par. N. Res.	Winfred A. Pray	28	Mar. 23, 1914	4 68 17	Aug. 2, 1915 Aug. 3, 1915	
South Bay Res.	" " "	"	" " "	6 39 20	July 28, 1915 July 29, 1915	
West Bay Res.	" " "	"	" " "	5 19 43	July 30, 1915 Aug. 10, 1915	
East Bay Res.	" " "	"	" " "	6 7 07	July 23, 1915 July 27, 1915	
Subdivisions Res.	" " "	"	" " "	7 67 48	July 31, 1915 Aug. 13, 1915	
Subdivisions	" " "	"	" " "	40 65 26	Aug. 4, 1915 Aug. 20, 1915	

The above map of Township No. 30 North Range No. 51 East of the Mt. Diablo Meridian Nevada is strictly conformable to the field notes of the survey thereof on file in this office, which have been examined and approved  
 U. S. Surveyor General's Office.  
 Reno, Nevada, April 13, 1917.

*John B. Sullivan*  
 Surveyor General.