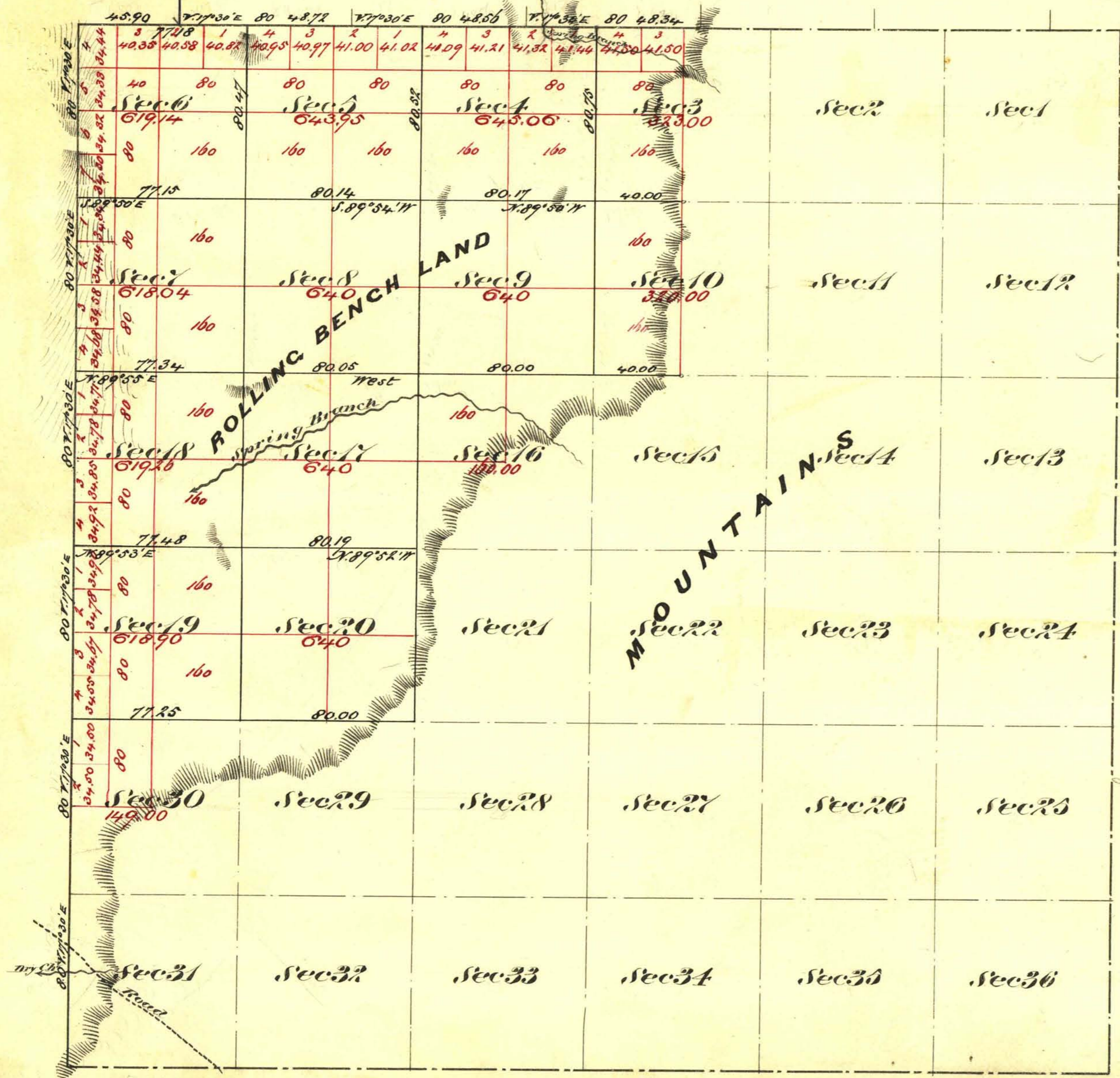


Sur cont 239

Township N<sup>o</sup> 30 North Range N<sup>o</sup> 51 East Mount Diablo Meridian



Sur cont 239

Aggregate Area of Public Land Surveyed	7,274.35 Acres
Estimated " " Mountains (unsurveyed)	15,655.56 "
Aggregate	22,931.71 "

Commenced Sept 5<sup>th</sup> 1874  
Completed Sept 8<sup>th</sup> 1874

Subdivision lines not otherwise noted run with a variation of 17' 30" E

Survey Designated	By whom Surveyed	Date of Contract	Am't of Money Paid for the	When Surveyed
Township Lines	Wm. H. Williams & Co. D. P. C. & Co.	July 25 <sup>th</sup> 1874	9,450.90	1874
Subdivision	" " " " " "	" " "	20,715.51	Sept 1874
Convergence	" " " " " "	" " "	1,456.82	" "

7<sup>th</sup> Cont.  
64

The above Map of Township N<sup>o</sup> 30 North Range N<sup>o</sup> 51 East Mount Diablo Meridian is strictly conformable to the field notes of the Survey thereof on file in this Office which have been examined and approved  
W. H. Surveyor General's Office  
Virginia City Nevada  
October 14<sup>th</sup> 1874

1974

T30 N., R51 E

E. S. Davis  
W. H. Surveyor General Nevada