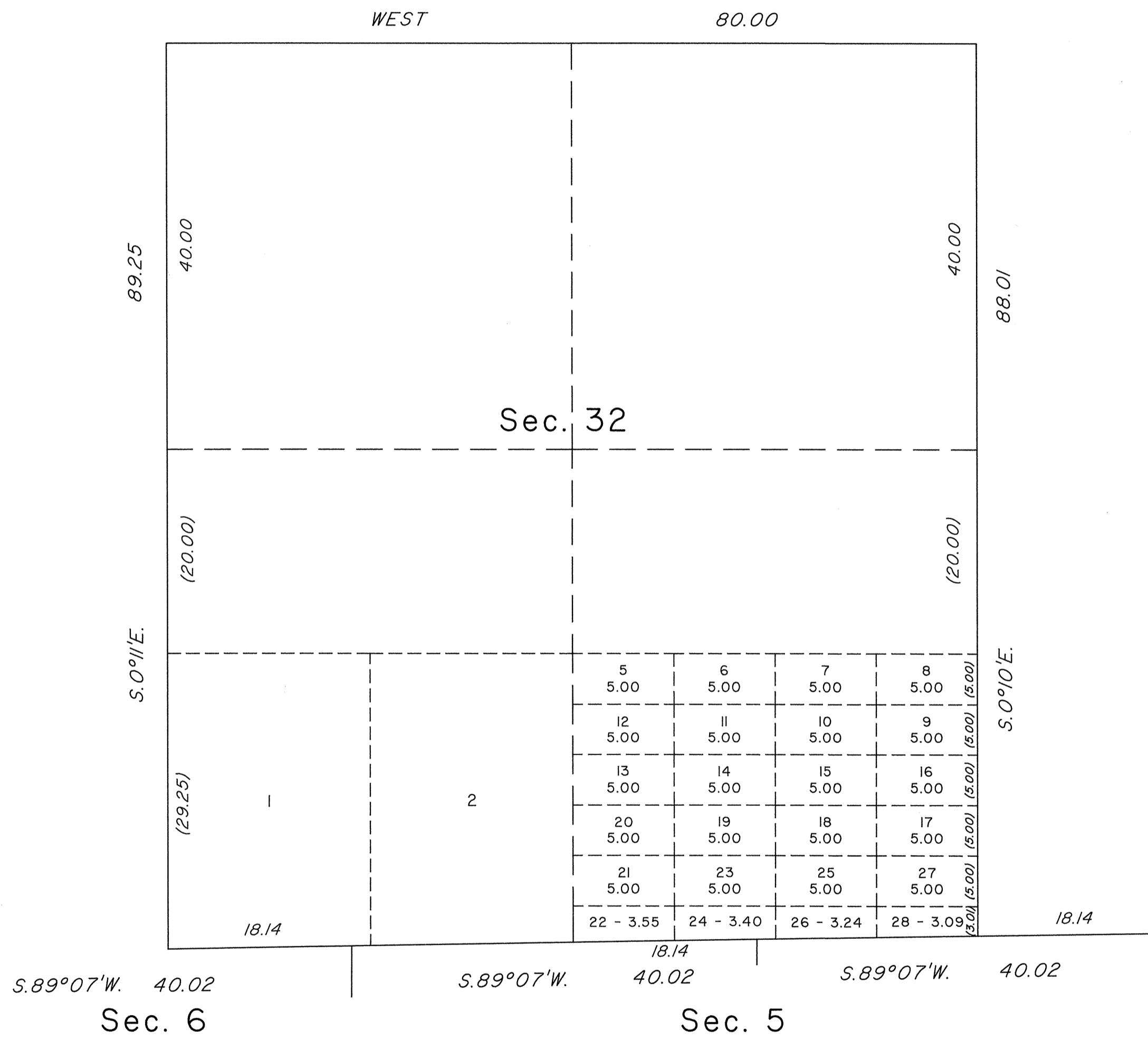
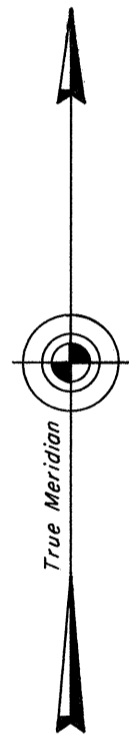


TOWNSHIP 30 NORTH, RANGE 48 EAST, MOUNT DIABLO MERIDIAN, NEVADA
 SUPPLEMENTAL PLAT OF SECTION 32



This plat, showing amended lottings of original lots 3 and 4, section 32, T. 30 N., R. 48 E., Mount Diablo Meridian, Nevada, is based upon the plat approved January 30, 1917 and the plat accepted July 24, 1980.

UNITED STATES DEPARTMENT OF THE INTERIOR
 BUREAU OF LAND MANAGEMENT

Reno, Nevada February 26, 1992

This plat, showing amended lottings, is based upon the official records, and having been correctly prepared in accordance with the regulations of this Bureau, is hereby accepted.

For the Director

James R. Munson

Acting Chief Cadastral Surveyor, Nevada

