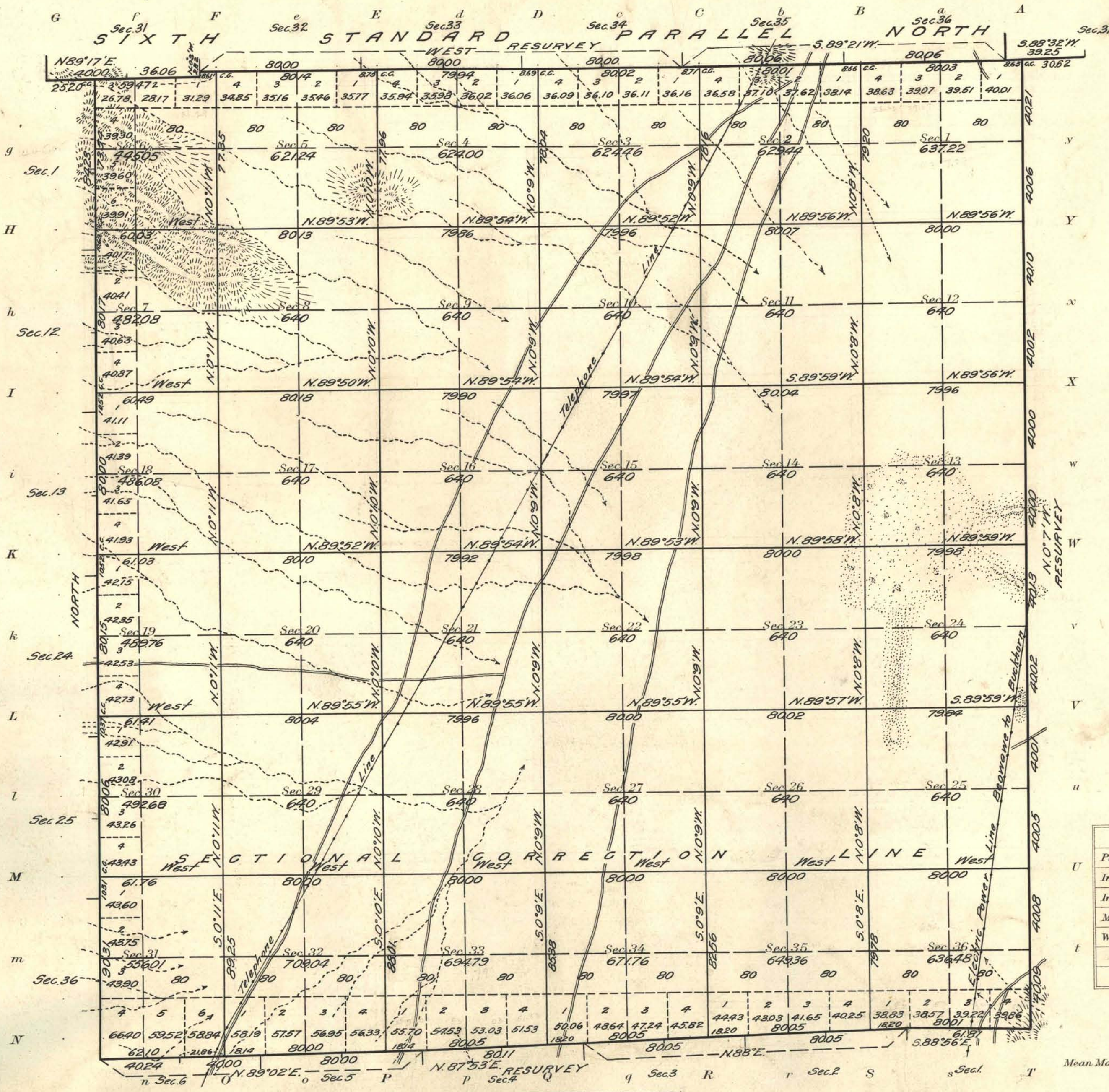


Township No. 30 North Range No. 48 East Mt. Diablo Meridian, Nevada



Areas in Acres	
Public Land	22249.45
Indian Reservation	
Indian Allotments	
Mineral Claims	
Water Surface	
Total Area	22249.45

Scale 40 Chains to an inch
Mean Magnetic Declination 18' 15" E
Latitude 40° 24' N
Longitude 116° 30' W

Surveys Designated	By Whom Surveyed	Group No. Date of instructions	Amount of Surveys		When Surveyed	
			Mls.	chs.	Uks.	Completed
6th St. Par. N. Res.	Winfred A. Pray	25 March 6, 1913	5	62	43	Nov. 3, 1914 Nov. 4, 1914
West Boundary	"	"	6	04	23	Oct. 9, 1914 Oct. 10, 1914
E and S. Balys Res.	"	"	11	63	03	Oct. 29, 1914 Nov. 2, 1914
Subdivision	"	"	59	00	32	Nov. 5, 1914 Nov. 10, 1914

The above map of Township No. 30 North Range No. 48 East of the Mt. Diablo Meridian Nevada is strictly conformable to the field notes of the survey thereof on file in this office, which have been examined and approved

U. S. Surveyor General's Office.

Reno, Nevada, January 30, 1917

John B. Sullivan
Surveyor General.