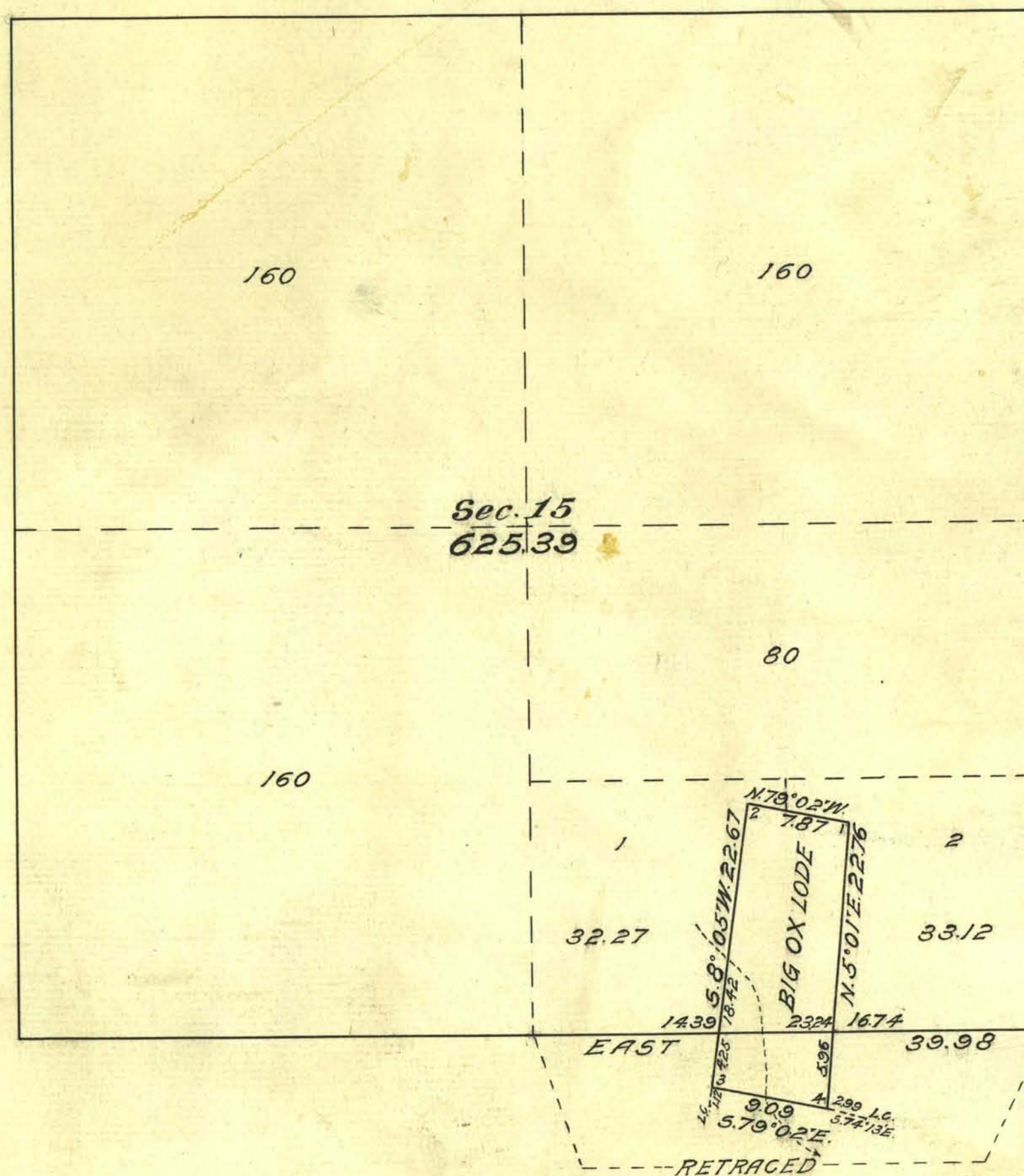


Supplemental Plat of Section 15 Township No. 30 North Range No. 47 East Mt. Diablo Meridian Nevada.



The above supplemental plat of Section 15, Township No. 30 North, Range No. 47 East Mt. Diablo Meridian Nevada is strictly conformable to the field notes of the survey on file in this office, which have been examined and approved.

U. S. Surveyor General's Office)
 Reno, Nevada)
 February 25, 1924) *J. C. Holden*
 Surveyor General for Nevada

| Surveys Designated | By Whom Surveyed | Group | | Amount of Surveys | | | When Surveyed | |
|----------------------|-------------------|-------|---------------|-------------------|------|------|---------------|---------------|
| | | No. | Date | Mls. | chs. | fks. | Bequn | Completed |
| S. Bdy. Sec. 15 Ret. | George W. Ridgway | 108 | April 2, 1923 | 39 | 98 | | Oct. 24, 1923 | Oct. 24, 1923 |
| Connections | U.S. Cadastral | " | " " " | 4 | 11 | | Oct. 24, 1923 | Oct. 24, 1923 |
| Ext. of Big Ox Lodge | Engineer | " | " " " | 62 | 39 | | Oct. 24, 1923 | Oct. 24, 1923 |
| | | | | | | | | |

A.R.S.