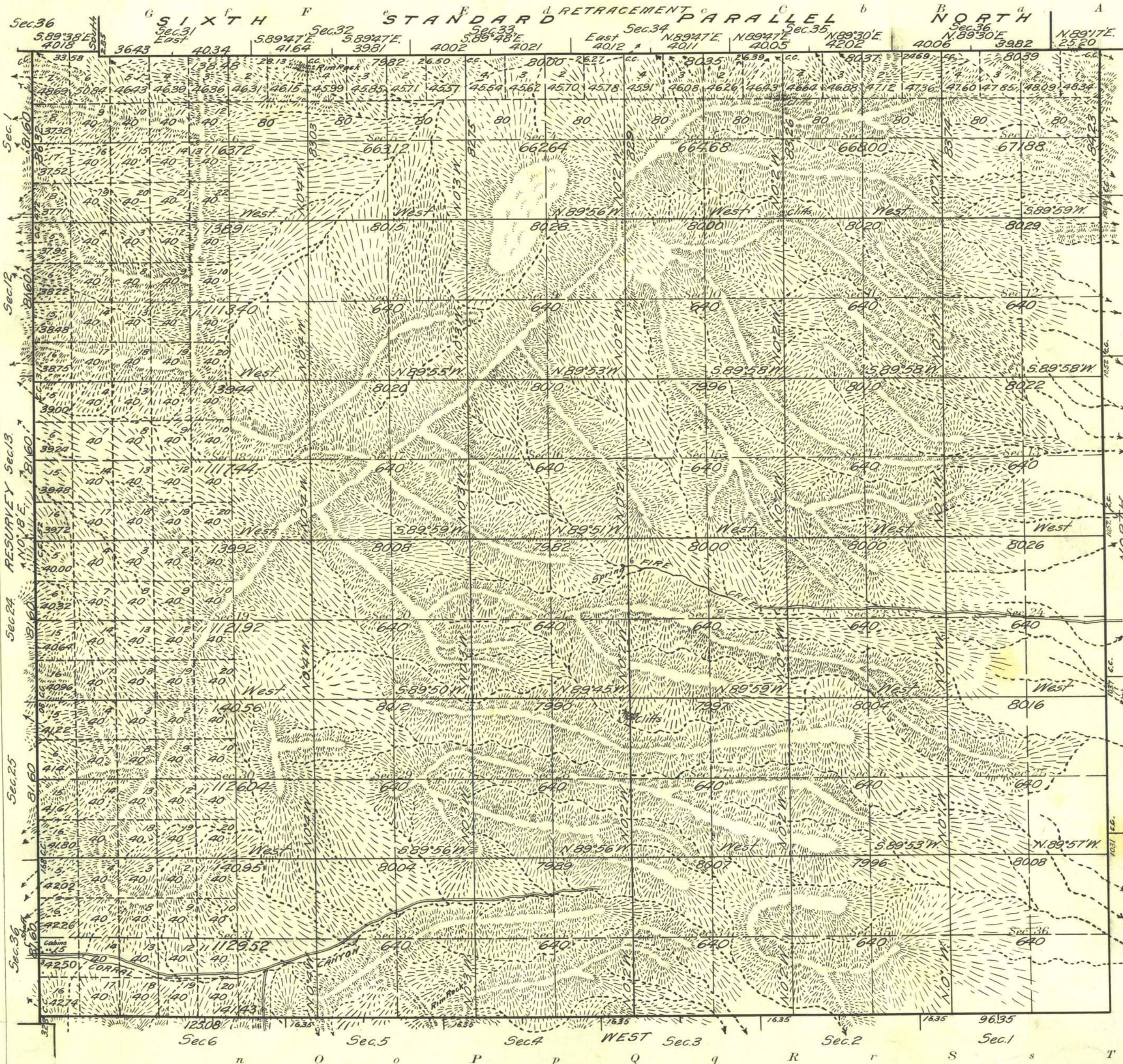


Township N° 30 North Range N° 47 East M^t Diablo Meridian, Nevada

Survey Accepted August 25, 1917
G.L.O.



NOTE
 Surveyor reports indications of mineral
 in Secs. 15, 22, 31, 32, 33 and 34.

Areas in Acres	
Public Land	26102.36
Indian Reservation	
Indian Allotments	
Mineral Claims	
Water Surface	
Total Area	26102.36

Scale 40 Chains to an inch
 Mean Magnetic Declination 18° 15' E.
 Latitude 40° 24' N.
 Longitude 116° 37' W.

Surveys Designated	By Whom Surveyed	Group			When Surveyed	
		No.	Date of Instructions	Amount of Surveys Mls. chs. lks.	When Surveyed Begun Completed	
6 th St. Par. N. Retr.	Winfred A. Pray	25	Mar. 6, 1913	6 62 26	Oct. 9, 1914 Oct. 9, 1914	
West Bdy. Res.		6		01 60	Oct. 6, 1914 Oct. 8, 1914	
E. and S. Bdy.		12		65 66	Sept. 20, 1914 Oct. 10, 1914	
Subdivision		63		76 36	Oct. 12, 1914 Oct. 28, 1914	

The above map of Township No. 30 North Range No. 47 East of the Mt. Diablo Meridian Nevada is strictly conformable to the field notes of the survey thereof on file in this office, which have been examined and approved
 U.S. Surveyor General's Office.
 Reno Nevada, January 30, 1917

John B. Sullivan
 Surveyor General.