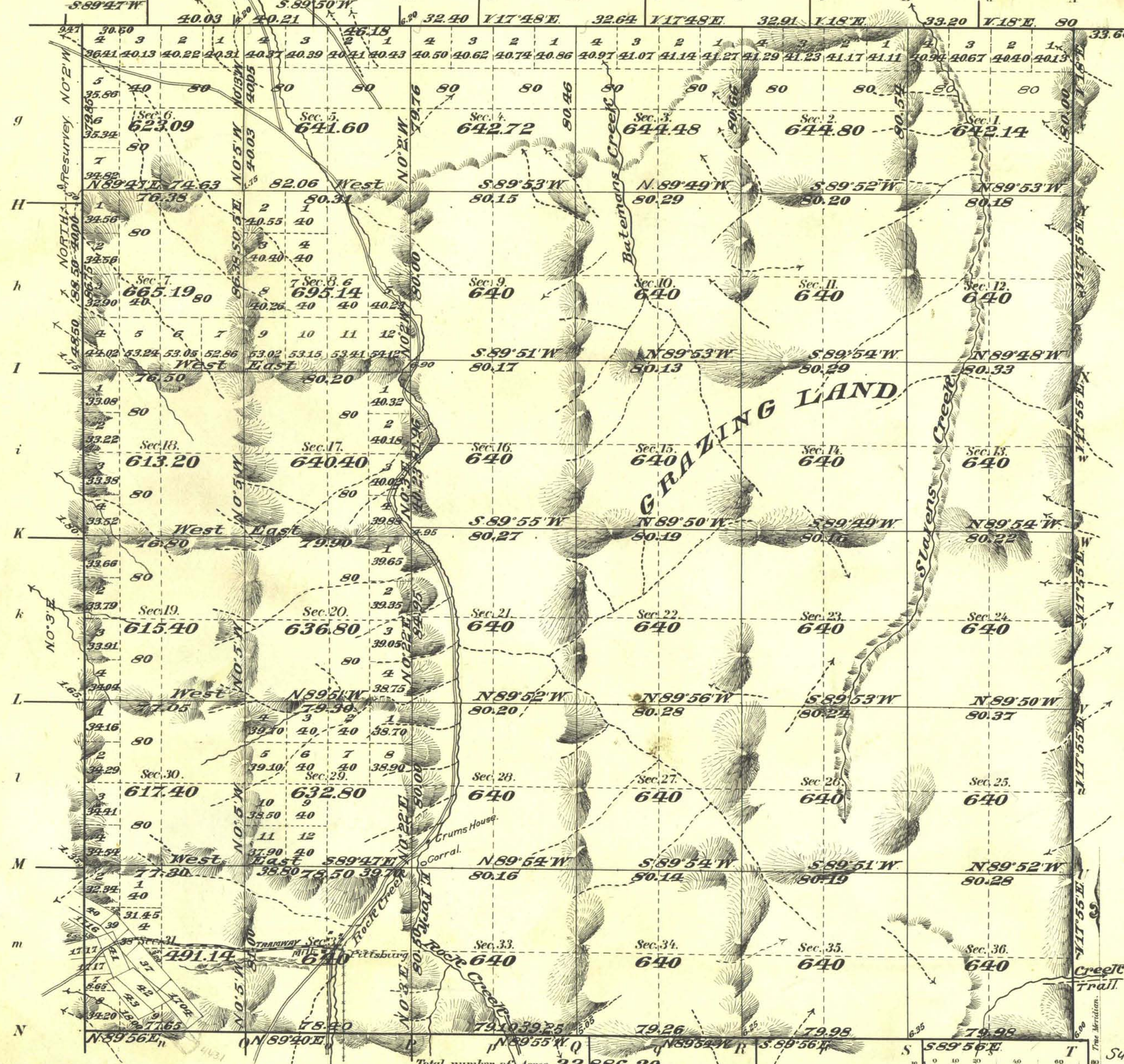


Township N<sup>o</sup> 30 North Range N<sup>o</sup> 46 East, Mt Diablo Meridian Nevada.  
SIXTH STANDARD PARALLEL NORTH.



| Meanders of  |         |                                 |       |         |                                 |       |         |                                 |
|--|---------|---------------------------------|-------|---------|---------------------------------|-------|---------|---------------------------------|
| Posts  | Courses | Ch <sup>2</sup> Lk <sup>2</sup> | Posts | Courses | Ch <sup>2</sup> Lk <sup>2</sup> | Posts | Courses | Ch <sup>2</sup> Lk <sup>2</sup> |
| <p><b>Pittsburg MINING Dist.</b></p> <p>No. Claim</p> <p>37 Lady Garrie</p> <p>38 Ida Henrietta</p> <p>39 Evening Star</p> <p>40 Cumberland</p> <p>41 Morning Star</p> <p>42 Sunshine</p> <p>43 True Blue</p> <p>1704 Bean Claim</p> <p>1716 Snow Ridge</p> <p>1717 May Day &amp; Autumn</p> |         |                                 |       |         |                                 |       |         |                                 |
| Latitude,  |         | 40° 26' N.                      |       |         |                                 |       |         |                                 |
| Longitude,   |         | 116° 45' 21" W.                 |       |         |                                 |       |         |                                 |
| Mean mag decl,   |         | 17° E.                          |       |         |                                 |       |         |                                 |

| Surveys Designated | By Whom Surveyed | Date of Contract | Amount of Surveys<br>M. Ch <sup>2</sup> Lk <sup>2</sup> | When Surveyed |
|--------------------|------------------|------------------|---|---------------|
| Township lines     |                  |                  |   |               |
| Subdivisions       |                  |                  |   |               |

The above Map of Township N<sup>o</sup> 30 N of Range N<sup>o</sup> 46 E. Mt Diablo Meridian Nevada is strictly conformable to the field notes of the survey thereof on file in this Office, which have been examined and approved.

Surveyor General's Office, *Matthew Ryle* Sur. Gen.  
Reno Nevada, Jan. 10, 1906.

Subdivision lines not otherwise noted, run with a variation of 17° 45' E.