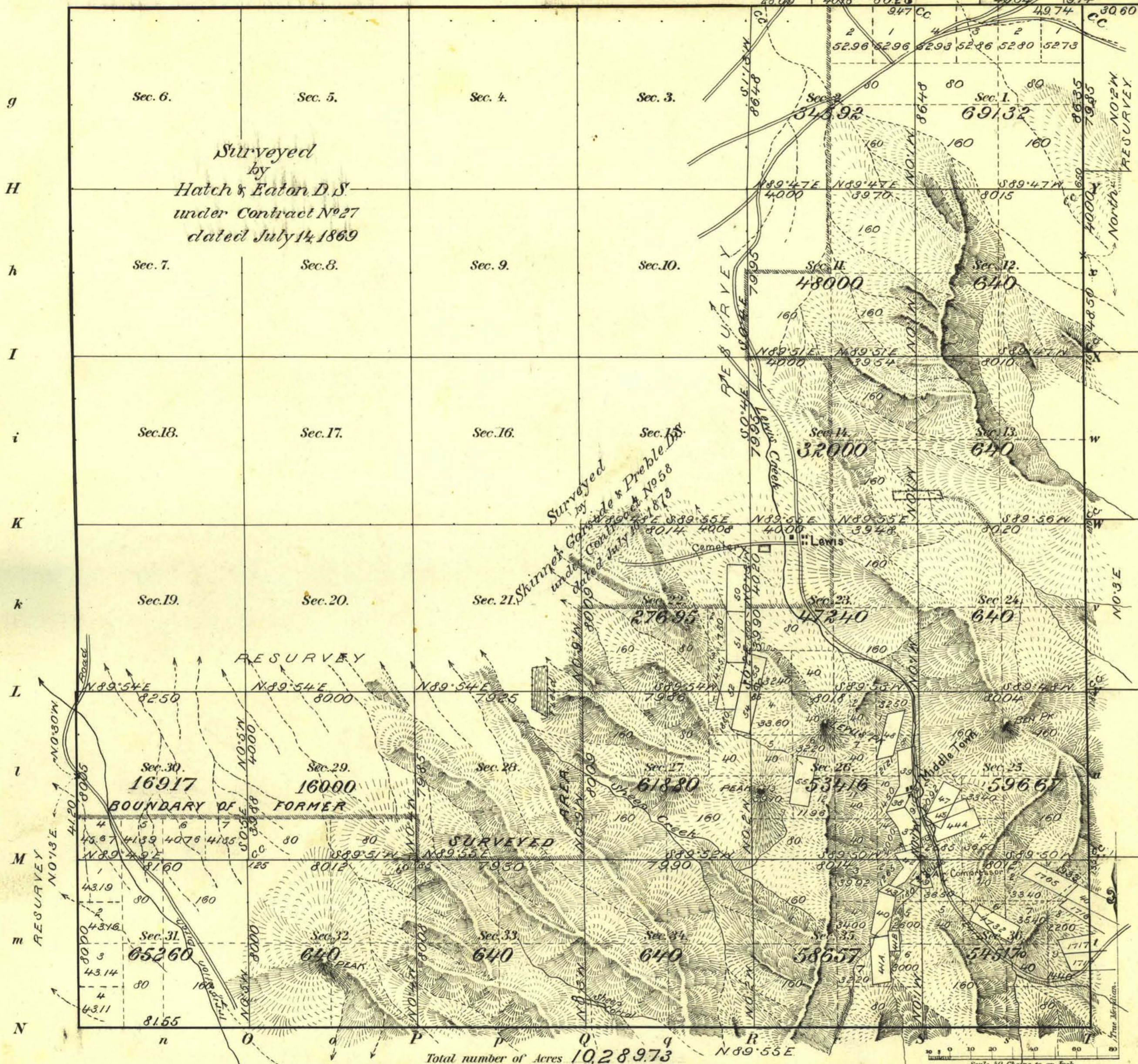


Township N^o 30 N. Range N^o 45 E. M^t Diablo Meridian Nevada.

G f F e E d D c Sixth Standard Parallel North



Meanders of

Posts	Courses	Ch ² Lk ²	Posts	Courses	Ch ² Lk ²	Posts	Courses	Ch ² Lk ²
Lewis Mining Dist								
NO								
37								
38								
39								
40								
41&B								
42								
43								
44								
45								
46								
47								
48								
49								
50								
51								
52								
53								
54								
55								
1716								
1717								
1732								

NO	CLAIM
40	Cumberland
1705	Allegheny

Latitude 40° 26' N
Longitude 116° 52' 08" W
Mean M Deca 16° 45' E

Accepted by G.L.O. April 14th 1902.

Surveys Designated	By Whom Surveyed	Date of Contract	Amount of Surveys M. Ch ² Lk ²	When Surveyed	N ^o of Contract
Township lines	S.T. MORSE	JUNE 4 1900	10 50 05	AUG. 8 1901	222
Subdivisions	"	"	24 27 47	" 12-21 1901	"
T ² Lines, Resur	"	"	5 38 06	" 1901	"
Subdivisions -	"	"	13 67 80	" 16 to 20 "	"
Connections	"	"	18 92	"	"
Old surveys	HATCH & EATON	JULY 14 1869			27
	SKINNER, GAR & PREBLE	" 10 1873			58

The above Map of Township N^o 30 N. of Range N^o 45 E. M^t Diablo Meridian, Nevada, is strictly conformable to the field notes of the survey thereof on file in this Office which have been examined and approved.
Surveyor General's Office.
Reno, Nevada March 24 1902
Matthew J. ...
Supt. Genl.