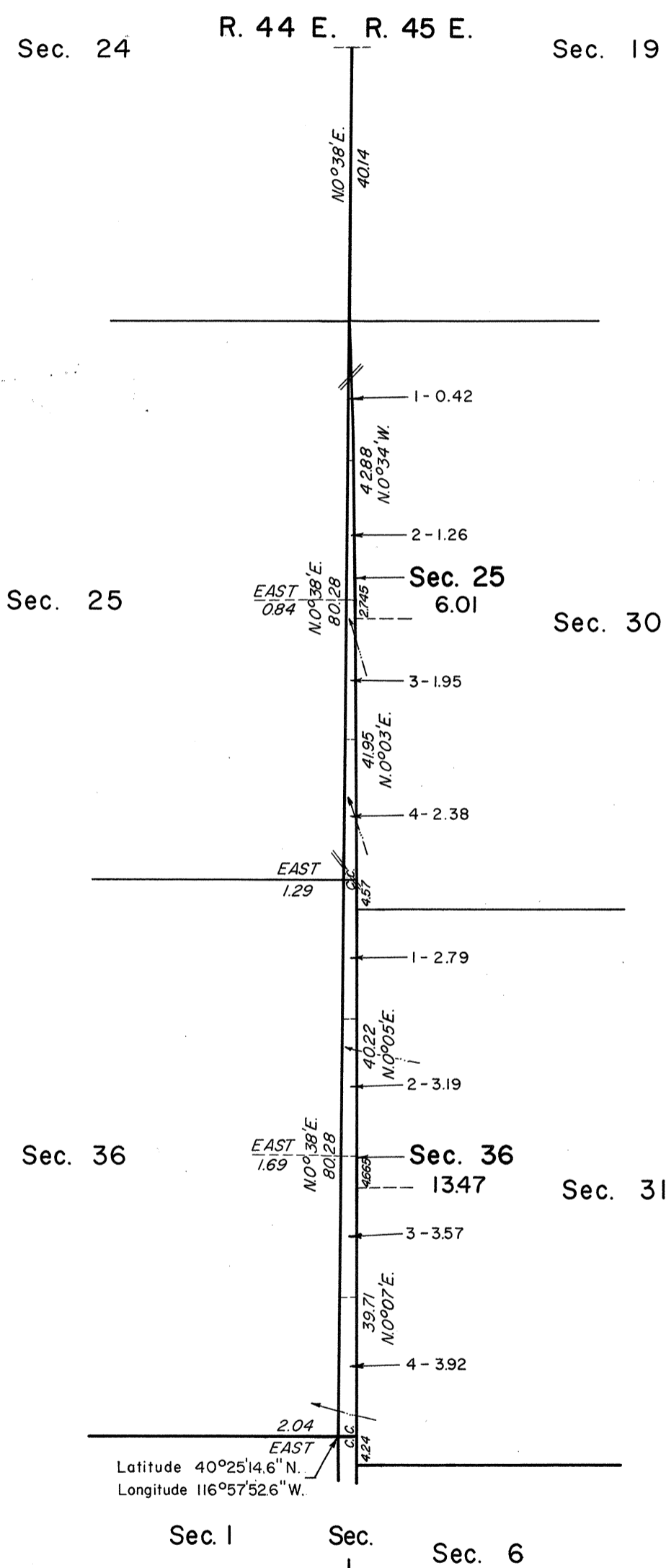


TOWNSHIP 30 NORTH, RANGE 44 $\frac{1}{2}$ EAST, OF THE MOUNT DIABLO MERIDIAN, NEVADA.

OFFICIALLY FILED
NEVADA LAND OFFICE
10:00 A.M. August 3, 1970

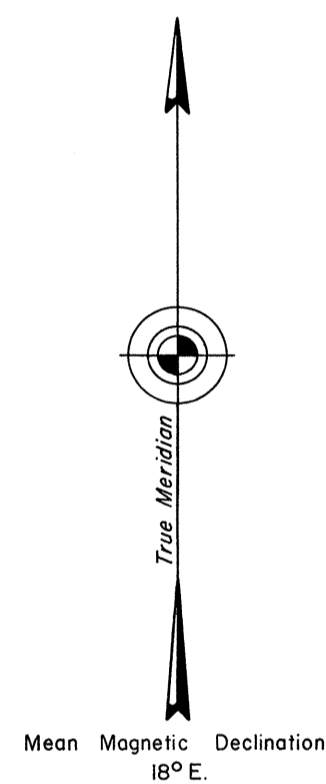


History of the earlier surveys is contained in the field notes.

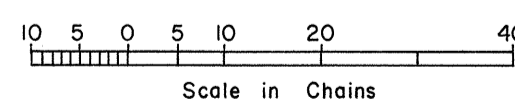
A dependent resurvey of a portion of the west boundary of T. 30 N., R. 45 E., was executed concurrently under T. 30 N., R. 45 E., of this group.

This plat represents a dependent resurvey of a portion of the east boundary of T. 30 N., R. 44 E., designed to restore the corners in their true original locations according to the best available evidence, and, the survey of the south boundary and subdivisional lines of T. 30 N., R. 44 $\frac{1}{2}$ E.

Survey executed by James R. Munson, Cadastral Surveyor, May 5, 1968, to October 11, 1968, under Special Instructions dated June 30, 1966, and Supplemental Special Instructions dated September 6, 1968, for Group No. 439, Nevada.



Latitude 40°25'14.6" N.
Longitude 116°57'52.6" W.



Area Surveyed 19.48 Acres

UNITED STATES DEPARTMENT OF THE INTERIOR
BUREAU OF LAND MANAGEMENT
Washington, D. C. April 27, 1970

This plat is strictly conformable to the approved field notes, and the survey, having been correctly executed in accordance with the requirements of law and the regulations of this Bureau, is hereby accepted.

For the Director

Clark I. Lemm

Chief, Division of Cadastral Survey

T30 R44 1/2