

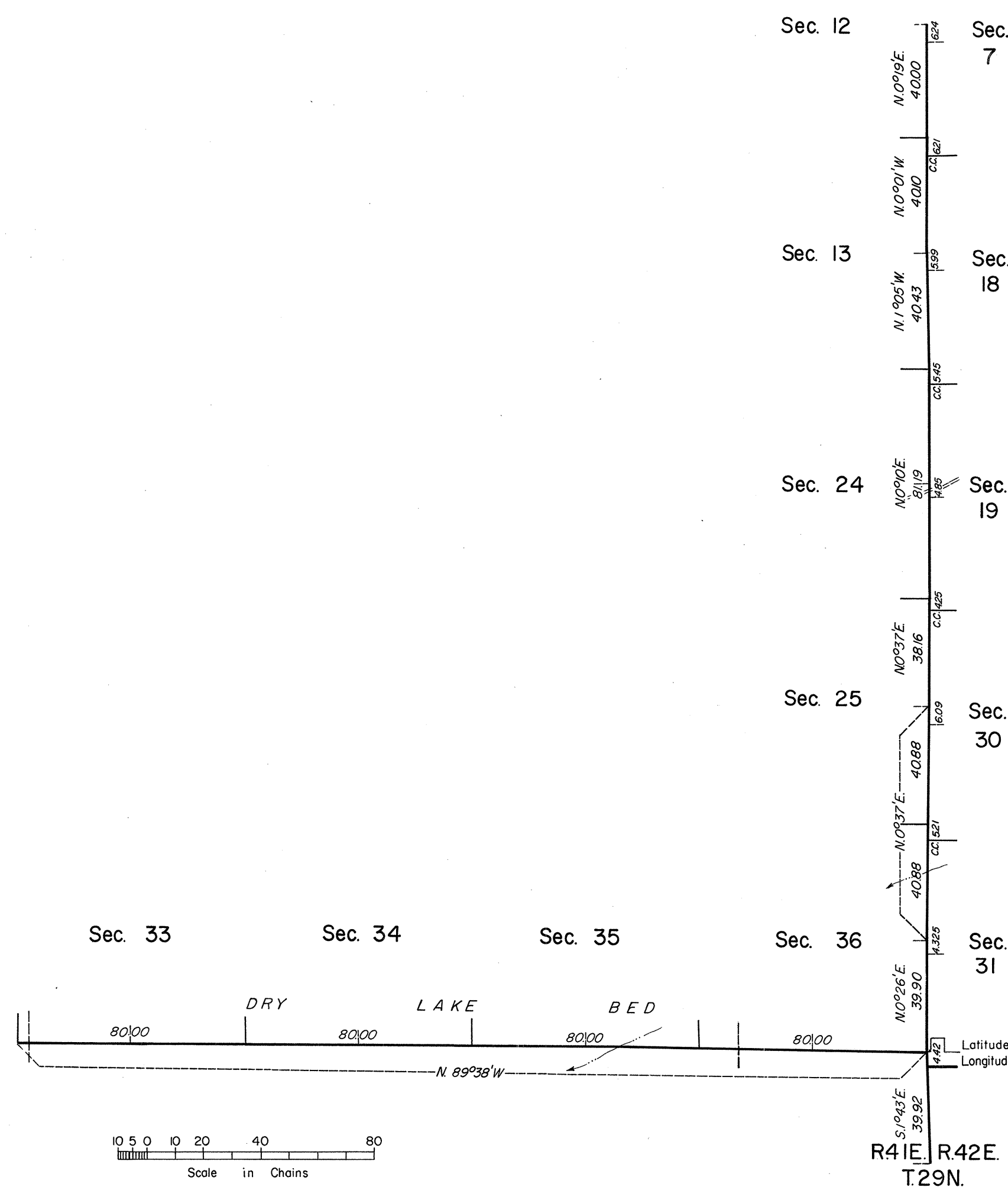
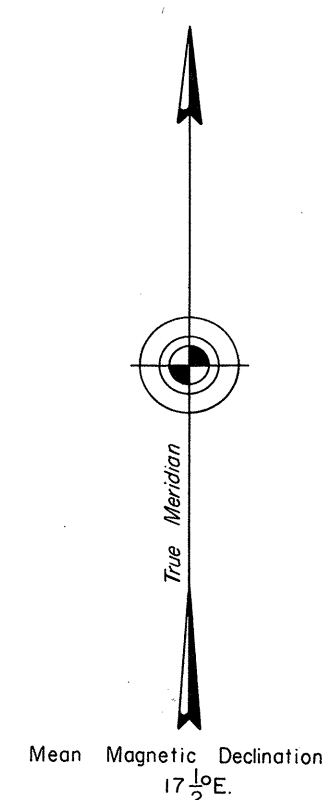
ORIGINAL

TOWNSHIP 30 NORTH, RANGE 41 EAST, OF THE MOUNT DIABLO MERIDIAN, NEVADA
DEPENDENT RESURVEY

History of the earlier surveys is contained in the field notes.

This plat represents a dependent resurvey of portions of the east and south boundaries, designed to restore the corners in their original locations according to the best available evidence.

Surveys executed by James R. Munson, Cadastral Surveyor, July 22 to July 26, 1966, under Special Instructions dated June 30, 1966, for Group No. 439, Nevada.



UNITED STATES DEPARTMENT OF THE INTERIOR
BUREAU OF LAND MANAGEMENT
Washington, D. C. July 16, 1968

This plat is strictly conformable to the approved field notes, and the survey, having been correctly executed in accordance with the requirements of law and the regulations of this Bureau, is hereby accepted.

For the Director

Rt Brown

Chief, Division of Engineering

Latitude 40°25'20.6"N
Longitude 117°18'14.3"W

R41E. R.42E.
T.29N.

T 30 N., R 41 E