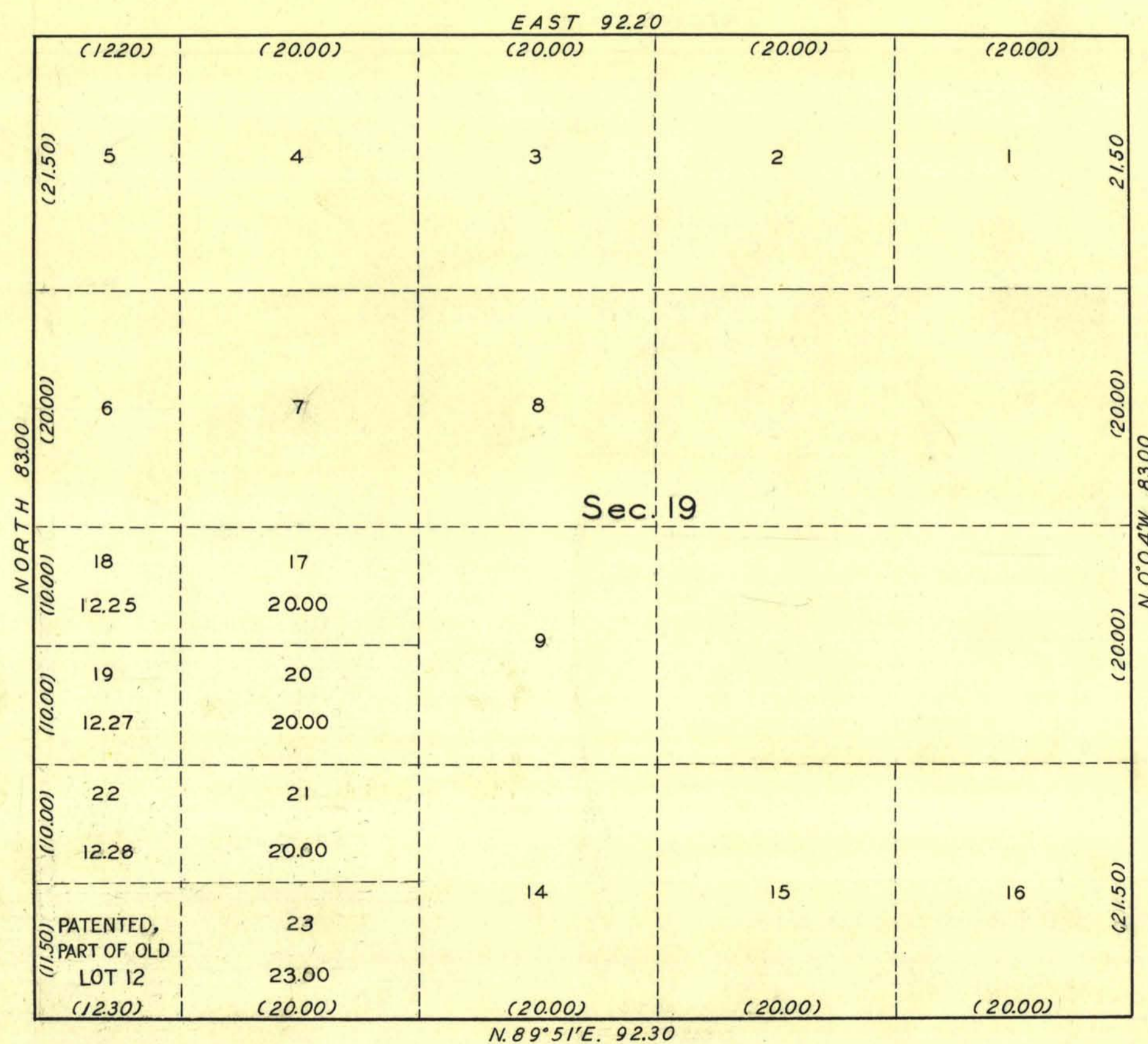


TOWNSHIP N°30 NORTH, RANGE N°34 EAST, OF THE MOUNT DIABLO MERIDIAN, NEVADA.
 SUPPLEMENTAL PLAT OF SEC. 19.



SCALE: 10 CHAINS (660 FEET) = 1 INCH.

Public Survey Office,
 Reno, Nevada, June 23, 1933.
 The above supplemental plat of Sec. 19, T. 30 N., R. 34 E.,
 of the Mount Diablo Meridian, Nevada, based upon the
 plat approved November 29, 1902, showing a subdivision
 of original lots 10, 11, 12 and 13, to accommodate the Central
 Pacific Railway Company's selection list No. 98, Carson City,
 014947, prepared in accordance with instructions, contained
 in the Commissioner's letter 'N' JAW, dated August 4, 1932, is
 hereby approved.

Alfred A. Sadler
 Acting Office Cadastral Engineer.

DEPARTMENT OF THE INTERIOR
 GENERAL LAND OFFICE
 Washington, D.C., July 11, 1933.

The amended lottings represented by this
 supplemental plat having been correctly made in
 accordance with the regulations of this office
 the plat is hereby approved.

D. H. Parrott
 Acting Assistant Commissioner.

T. 30 N., R. 34 E.