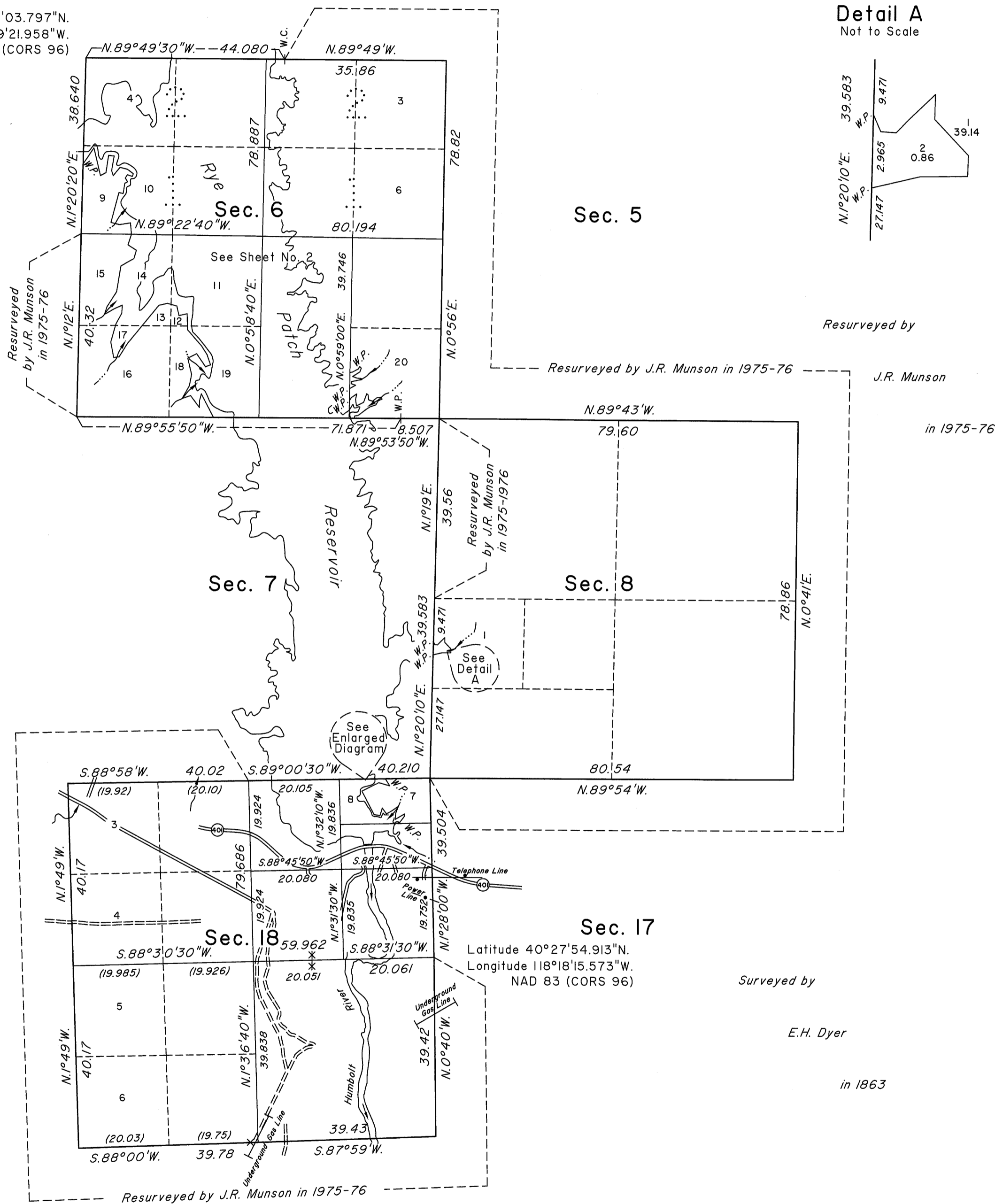


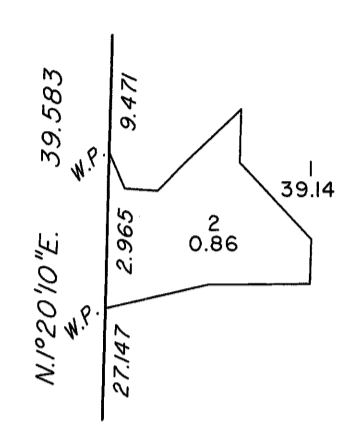
# TOWNSHIP 30 NORTH, RANGE 33 EAST, OF THE MOUNT DIABLO MERIDIAN, NEVADA

## DEPENDENT RESURVEY AND SUBDIVISION

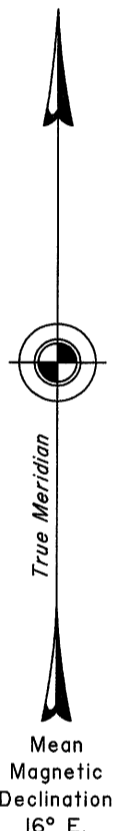
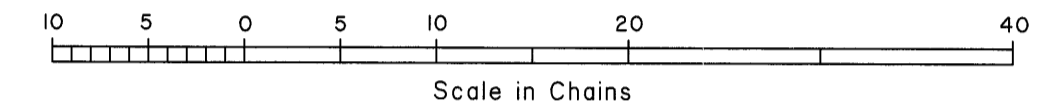
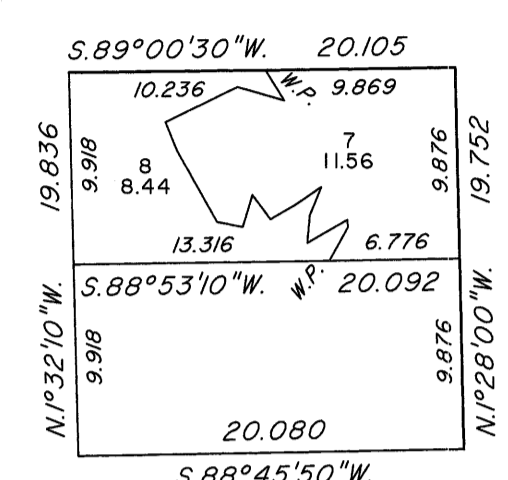
Latitude 40°30'03.797"N.  
Longitude 118°19'21.958"W.  
NAD 83 (CORS 96)



**Detail A**  
Not to Scale



**Enlarged Diagram**  
NE1/4 NE1/4 Sec. 18



Resurveyed by J.R. Munson in 1975-76

Resurveyed by J.R. Munson in 1975-76

Resurveyed by

J.R. Munson

in 1975-76

Resurveyed by J.R. Munson in 1975-1976

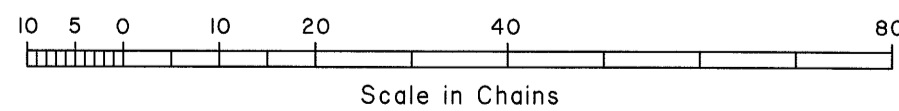
Surveyed by

E.H. Dyer

in 1863

Resurveyed by J.R. Munson in 1975-76

Latitude 40°27'54.913"N.  
Longitude 118°18'15.573"W.  
NAD 83 (CORS 96)



A history of surveys is contained in the field notes.

This plat, in two sheets, represents the dependent resurvey of portions of the west and north boundaries and a portion of the subdivisional lines designed to restore the corners in their true original locations according to the best available evidence, the subdivision of sections 6 and 18, and the survey of the meanders of portions of the 4144 foot contour line, Township 30 North, Range 33 East, Mount Diablo Meridian, Nevada.

Except as shown, hereon, the lottings and areas are as shown on the plat approved March 18, 1864, and the plat accepted August 31, 1978.

Survey executed by Don R. Aschenbach, Cadastral Surveyor, beginning August 11, 2009 and completed October 6, 2011, under Special Instructions dated July 10, 2009, and Supplemental Special Instructions dated June 6, 2011, for Group No. 879, Nevada.

UNITED STATES DEPARTMENT OF THE INTERIOR  
BUREAU OF LAND MANAGEMENT

Reno, Nevada February 28, 2012

This plat is strictly conformable to the approved field notes, and the survey, having been correctly executed in accordance with the requirements of law and the regulations of this Bureau, is hereby accepted.

For the Director

Chief Cadastral Surveyor, Nevada

OFFICIALLY FILED  
NEVADA STATE OFFICE  
at 10:00 AM on March 1, 2012