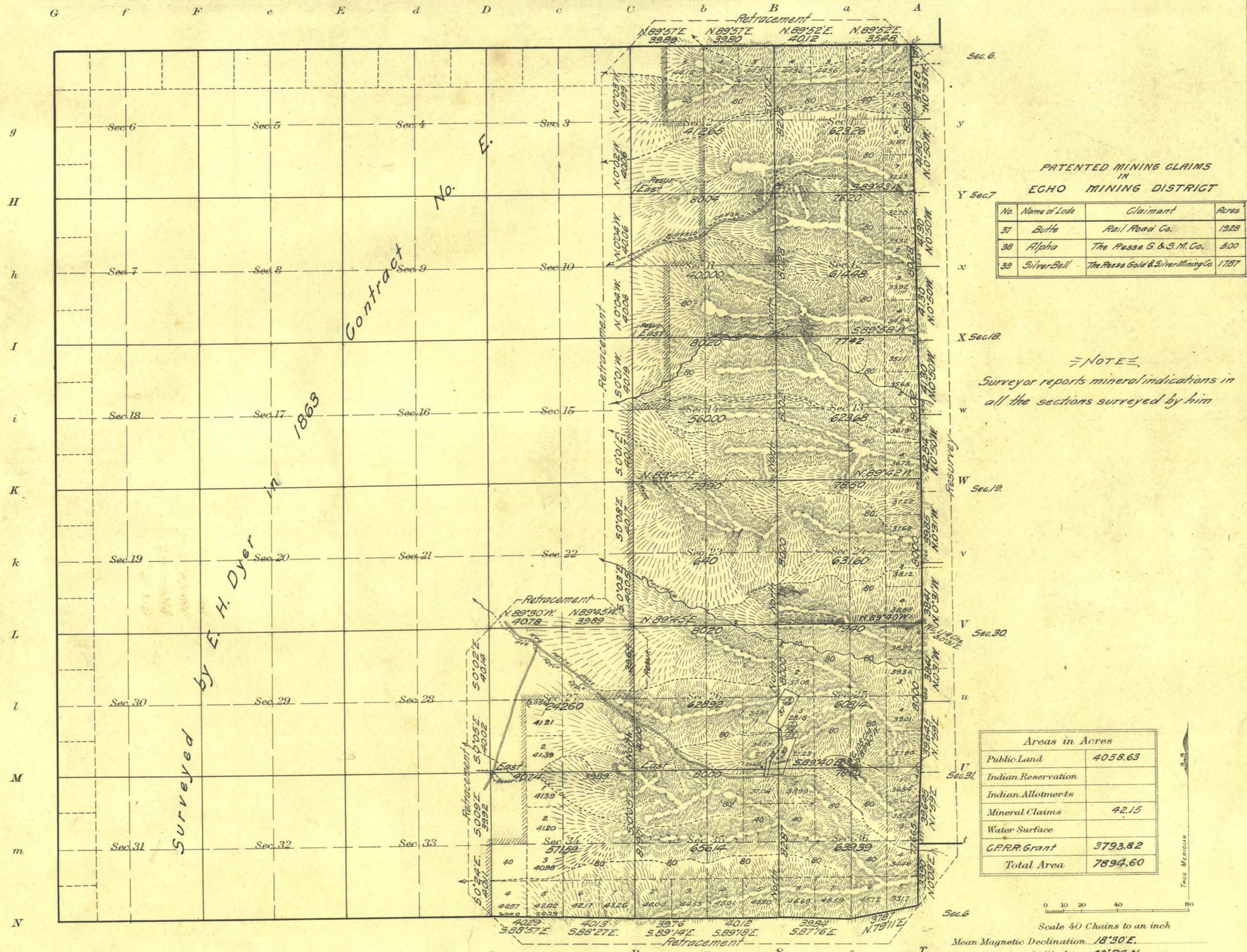


Township N<sup>o</sup> 30 North Range N<sup>o</sup> 33 East M<sup>t</sup> Diablo Meridian, Nevada



PATENTED MINING CLAIMS  
IN  
EGHO MINING DISTRICT

No.	Name of Lode	Claimant	Acres
37	Butte	Rail Road Co.	1928
38	Alpha	The Pesse G. & S. M. Co.	500
39	Silver Bell	The Pesse Gold & Silver Mining Co.	1787

NOTES  
Surveyor reports mineral indications in all the sections surveyed by him

Areas in Acres

Public Land	4058.63
Indian Reservation	
Indian Allotments	
Mineral Claims	42.15
Water Surface	
C.P.R.R. Grant	3793.82
Total Area	7894.60

Scale 40 Chains to an inch  
Mean Magnetic Declination 18°30' E.  
Latitude 40°24' N.  
Longitude 118°13' W.

Surveys Designated	By Whom Surveyed	Group		Amount of Surveys			When Surveyed	
		No.	Date	Mls.	chs.	lks.	Begun	Completed
East Boundary Resurvey	William H. Granger and Herbert L. Potter	14	August 22, 1911	6	00	15	July 11, 1912	July 26, 1912
Subdivisions Resurvey	"	"	"	1	34	64	"	"
North S. Boundary Retracement	"	"	"	4	73	30	"	"
Subdivisions Retracement	"	"	"	7	03	61	"	"
Subdivisions	"	"	"	17	43	34	"	"

The above map of Township No. 30 North Range No. 33 East of the M<sup>t</sup> Diablo Meridian, Nevada is strictly conformable to the field notes of the survey thereof on file in this office, which have been examined and approved

U. S. Surveyor General's Office.  
Reno, Nevada, April 11, 1914

*Marshall Kyle*  
Surveyor General.