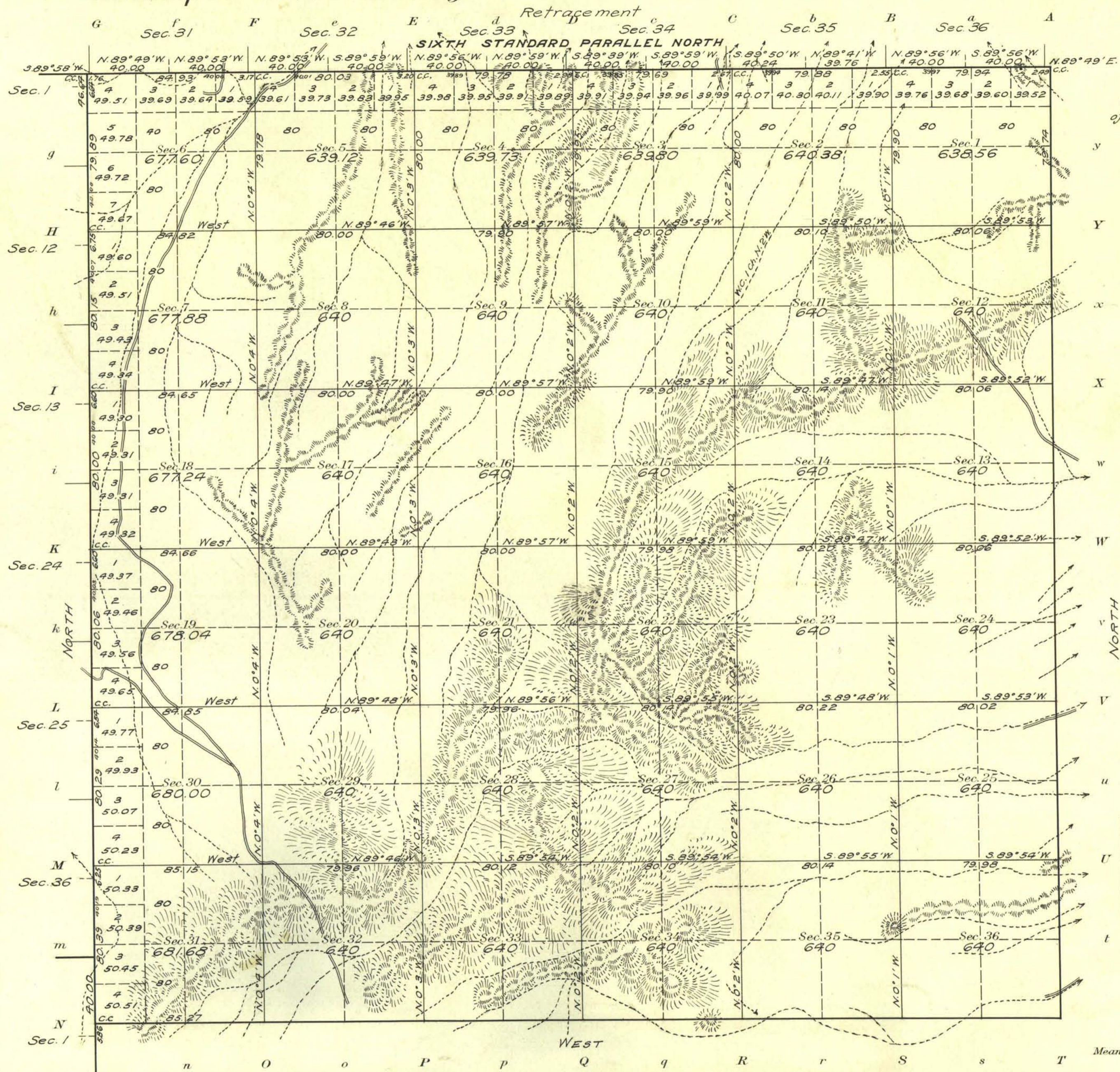


Township N^o 30 North Range N^o 31 East Mt Diablo Meridian, Nevada



-Note-
Surveyor reports indications
of copper in secs 22 & 27

Areas in Acres	
Public Land	11634.95
Indian Reservation	
Indian Allotments	
Mineral Claims	
Water Surface	
G.P.R.R. Land Grant	11635.08
Total Area	23270.03

Scale 40 Chains to an inch

Mean Magnetic Declination 18° 31' E.
Latitude 40° 24' 30" N.
Longitude 118° 26' W.

Surveys Designated	By Whom Surveyed	Group		Amount of Surveys		When Surveyed	
		No.	Date	Mls. chs.	lks.	Began	Completed
Sixth St. Par. North	William H. Croizier and Newton E. Potter	14	Aug. 22, 1911	6	4	25	Aug. 7, 1912 Aug. 8, 1912
E.S. & W. Boundaries	Thos. A. Naigh and H. W. Reppert	"	"	18	5	79	Aug. 7, 1912 Sept. 25, 1912
Subdivisions	"	"	"	60	24	84	Sept. 18, " Sept. 27, 1912

The above map of Township No. 30 North Range No. 31 East of the Mt. Diablo Meridian Nevada is strictly conformable to the field notes of the survey thereof on file in this office, which have been examined and approved

U. S. Surveyor General's Office.
Reno, Nevada April 11, 1914

Martin Kyle
Surveyor General.