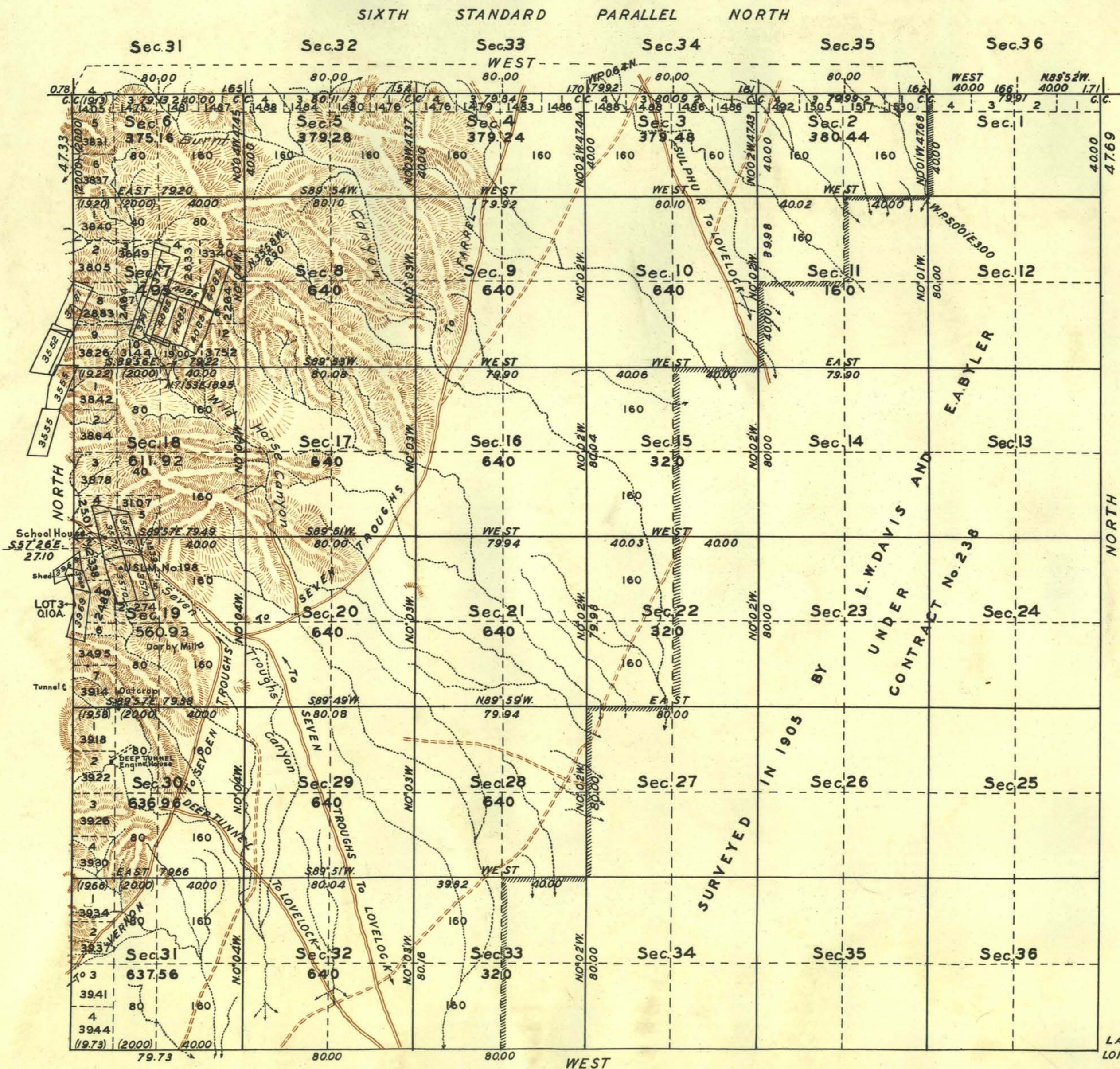


TOWNSHIP N° 30 NORTH RANGE N° 29 EAST MOUNT DIABLO MERIDIAN NEVADA.



LIST OF MINERAL CLAIMS

- SUR.No.3570 YELLOW DOG No.1
- SUR.No.3570 YELLOW DOG No.2
- SUR.No.3570 BADGER No.1 JOHN GLEGHORN
- SUR.No.3570 BADGER No.2 JOHN GLEGHORN
- SUR.No.3570 JACK RABBIT FRACTION
- SUR.No.3741 NORTH POLE
- SUR.No.3741 SOUTH POLE
- SUR.No.3741 NORTH POLE FRACTION
- SUR.No.3741 SOUTH POLE FRACTION
- SUR.No.3741 NORTH POLE FRACTION No.1
- SUR.No.3555 INDUSTRY No.1
- SUR.No.3555 INDUSTRY No.2
- SUR.No.4085 J.&B. No.1
- SUR.No.4085 J.&B. No.2
- SUR.No.4085 J.&B. No.3
- SUR.No.4085 J.&B. FRACTION
- SUR.No.4085 B.&J. No.1
- SUR.No.4085 JACK SHOE
- SUR.No.3969 SILVER KING EXTENSION
- SUR.No.3969 MISPAH FRACTION
- SUR.No.3969 FRANKLIN FRACTION
- SUR.No.3552 ECLIPSE FRACTION No.1
- SUR.No.3552 ECLIPSE FRACTION
- SUR.No.3781 ACTURIAN

LATITUDE 40°25'N.
LONGITUDE 118°40'W.

Mean Magnetic Declination,

Scale: 40 Chains to an Inch.

Area Surveyed, 12355.97 Acres.

LINES DESIGNATED	BY WHOM SURVEYED	GROUP NO.	DATE	MILEAGE MLS. CHS.	WHEN SURVEYED BEGUN COMPLETED
Exterior & Subdiv	L.W. DAVIS & E. ABYLER		Nov. 29, 1903		Aug. 29, 1905 Sept. 13, 1905
Subdivisional	GEORGE W. RIDGWAY	146	Oct. 29, 1927	42 7461	Nov. 19, 1927 Dec. 10, 1927
EXTERIOR	" " "	146	Oct. 29, 1927	2 0000	Nov. 19, 1927 Nov. 19, 1927
EXTERIOR	" " "	112	Aug. 13, 1923	12 4784	Aug. 16, 1927 Oct. 15, 1927
MISCELLANEOUS	" " "	146	Oct. 29, 1927	2 5019	Oct. 11, 1927 Dec. 8, 1927

Office of U.S. Supervisor of Surveys

Denver, Colorado, Feb. 13, 1931.

The above plot of Township No. 30 North Range No. 29 East of the Mount Diablo Meridian, Nevada is strictly conformable to the field notes of the survey thereof which have been examined and approved.

Wm. P. Dimon
U.S. Supervisor of Surveys.

DEPARTMENT OF THE INTERIOR

GENERAL LAND OFFICE

Washington, D.C., April 25, 1931

The survey represented by this plat having been correctly executed in accordance with the requirements of law and the regulations of this office, is hereby accepted.

Thos. Stowell
Assistant Commissioner.

J.R.H.
30