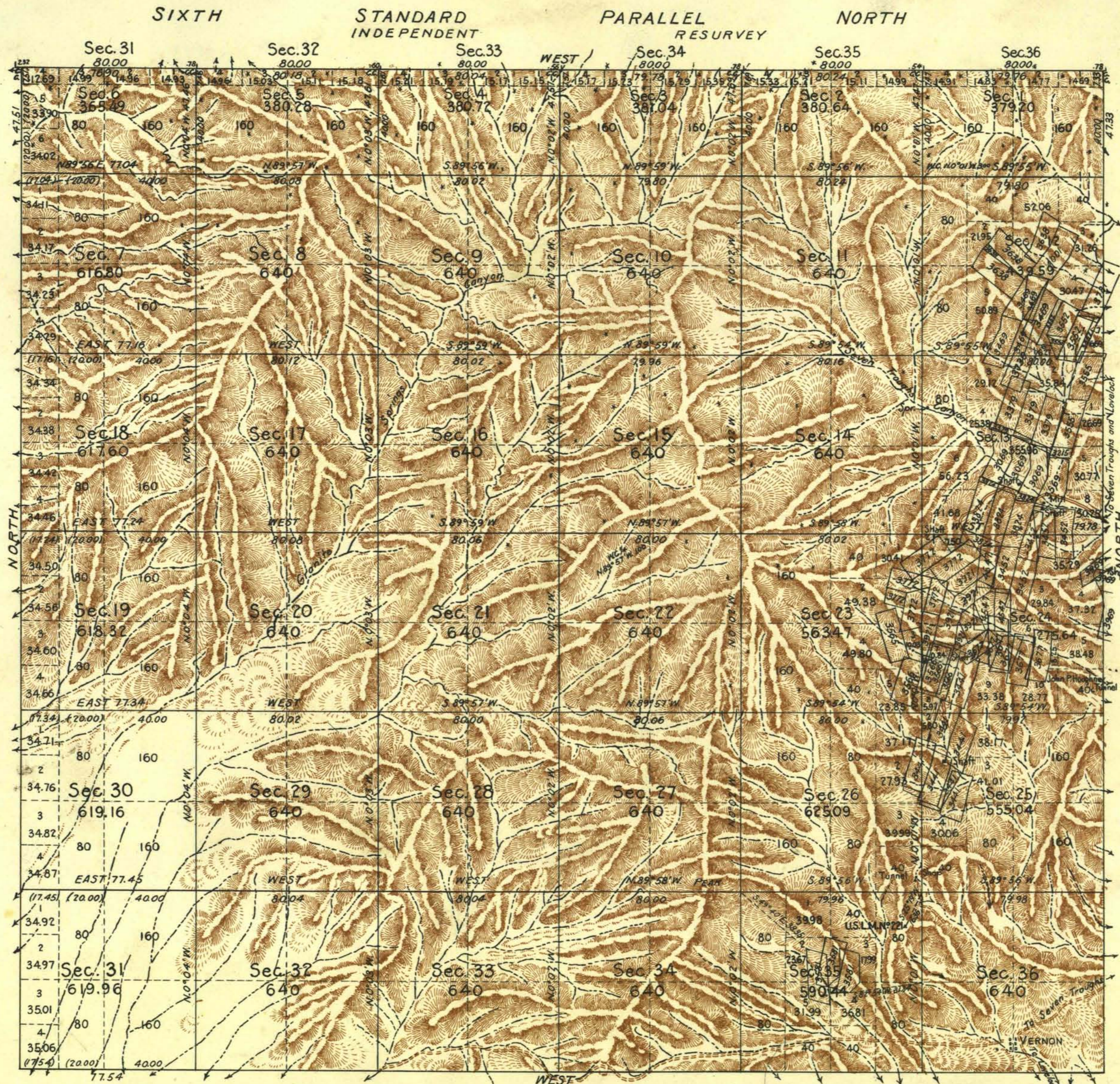


TOWNSHIP N°30 NORTH, RANGE N°28 EAST OF THE MOUNT DIABLO MERIDIAN, NEVADA.



LIST OF MINING CLAIMS		
Sur. N°	3069	Lookout N°1
" "	" "	Lookout N°2
" "	" "	Lookout N°4
" "	3215	Rough Luck
" "	3379	Outlook N°1
" "	" "	Outlook N°2
" "	" "	Outlook N°3
" "	" "	Lookout Fraction
" "	" "	Porphyry Dike Fraction
" "	3441	Destroyer N°1
" "	" "	Fairview N°1
" "	" "	Fairview N°2
" "	" "	Fairview N°3
" "	" "	Fairview Fraction
" "	" "	Fairview
" "	" "	Tomopah
" "	" "	Oversight
" "	" "	End Line Fraction
" "	" "	Wedge Fraction
" "	3452	Idw'l Mine
" "	" "	Arrow
" "	" "	Cymo
" "	" "	L. Lewelyn Mine
" "	" "	Idris Mine
" "	" "	Ivor Mine
" "	" "	Tomy Mine
" "	3489	Standard N°1
" "	" "	Standard N°2
" "	" "	Standard Fraction
" "	" "	Jannis
" "	" "	Harnan Fraction
" "	3552	Eclipse
" "	" "	Syndicate
" "	" "	Eclipse Fraction N°1
" "	" "	Eclipse Fraction
" "	" "	Syndicate Fraction
" "	" "	Eclipse Fraction N°3
" "	3555	Industry N°1
" "	" "	Industry N°2
" "	3565	Nancy N°2
" "	3566	Thanksgiving Fraction
" "	" "	Thanksgiving
" "	" "	White Gap
" "	" "	White Gap Fraction
" "	3569	Fine Gold John Cleghorn
" "	3581	Montezuma
" "	" "	Womans Rights
" "	" "	Womans Rights Fraction
" "	3638	Standard N°4
" "	" "	Standard N°5
" "	" "	Black Rock
" "	" "	Extension
" "	3677	High Up
" "	" "	High Up N°1
" "	" "	High Up N°2
" "	" "	Dixie Queen
" "	" "	Martha G.
" "	" "	Dixie Queen Annex
" "	3730	North End
" "	3772	Signal Peak N°1
" "	" "	Signal Peak N°2
" "	" "	Signal Peak Fraction
" "	" "	Eureka
" "	" "	Great Dyke N°2
" "	" "	Nancy Fraction
" "	" "	Hum-boldt
" "	3781	Acturian
" "	3824	Lookout N°3
" "	" "	Lookout N°5
" "	" "	Lookout N°6
" "	" "	Townsend Fraction
" "	" "	Canon Fraction
" "	" "	Saddle Fraction
" "	3921	White Cloud N°1
" "	" "	White Cloud N°2
" "	" "	White Cloud N°3
" "	" "	Nancy N°1
" "	" "	Porphyry Peak
" "	" "	White Cloud Fraction
" "	3969	Silver King Extension
" "	" "	Mispah Fraction
" "	" "	Franklin Fraction
" "	4001	Three Sisters
" "	4547	Apex
" "	" "	Apex N°1
" "	" "	Apex Fraction

Latitude 40° 25' N.
Longitude 118° 46' W.

Scale: 40 Chains to an Inch. Area: Surveyed, 20,284.44

LINES DESIGNATED	BY WHOM SURVEYED	GROUP		MILEAGE		WHEN SURVEYED	
		N°	DATE	MLS.	CHS.	BEGUN	COMPLETED
Exterior	George W. Ridgway	112	Aug. 13, 1923.	23	12.38	Oct. 5, 1927	Dec. 5, 1927.
Subdivisional	" " "	"	" " "	57	64.19	15 "	" 7, "
Miscellaneous	" " "	"	" " "	2	70.30		

Office of U.S. Supervisor of Surveys.
Denver, Colorado. Jan. 5, 1931
The above plat of Township No. 30 North, Range No. 28 East of the Mount Diablo Meridian Nevada is strictly conformable to the field notes of the survey thereof which have been examined and approved.

Samuel Johnson
U.S. Supervisor of Surveys.

DEPARTMENT OF THE INTERIOR
GENERAL LAND OFFICE
Washington, D.C. February 25, 1931
The survey represented by this plat having been correctly executed in accordance with the requirements of law and the regulations of this office is hereby accepted.

Wm. C. Stovall
Assistant Commissioner.

Also M.S. 3503 - in sec. 25 (26) -
surrounded by M.S. 3441