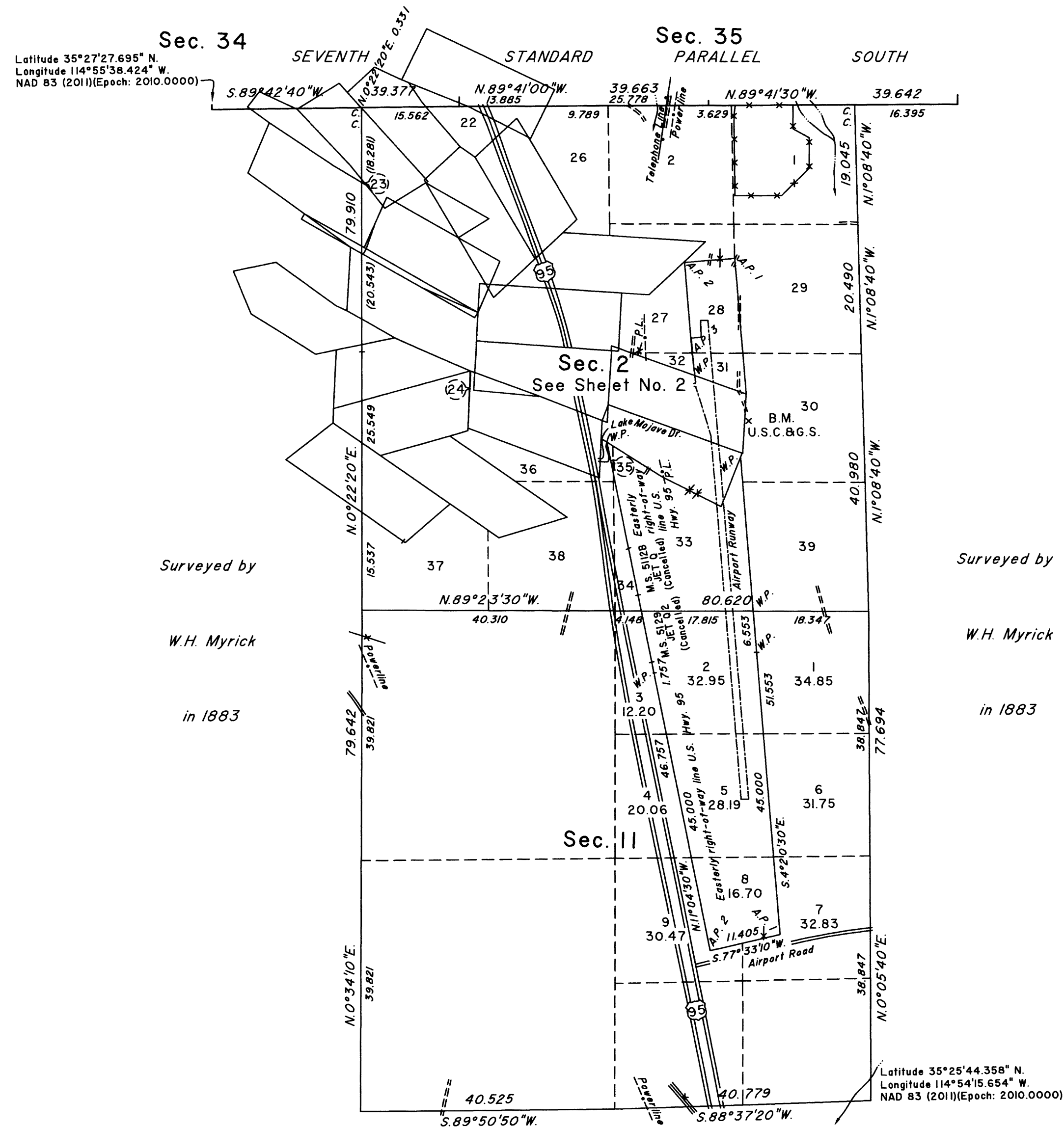


TOWNSHIP 29 SOUTH, RANGE 63 EAST, OF THE MOUNT DIABLO MERIDIAN, NEVADA

DEPENDENT RESURVEY, SUBDIVISION AND METES-AND-BOUNDS SURVEYS

OFFICIALLY FILED
NEVADA STATE OFFICE
at 10:00 AM on
MAY 14 2020



A history of surveys is contained in the field notes.

This plat, in two sheets, represents the dependent resurvey of the Seventh Standard Parallel South, through a portion of Range 63 East, a portion of the subdivisional lines and portions of certain mineral surveys, designed to restore the corners in their true original locations according to the best available evidence, and metes-and-bounds surveys in sections 2 and 11, Township 29 South, Range 63 East, Mount Diablo Meridian, Nevada.

Except as indicated hereon, the lottings and areas are as shown on the plat approved February 23, 1884, the Secretary's copy of lottings certified May 28, 1904, and the supplemental plats of section 2 accepted August 27, 1952 and August 25, 1972.

Unless otherwise indicated in the field notes, all courses and distances shown on the plat along the perimeter of the mineral segregation areas were taken or computed from the appropriate mineral survey record.

Survey executed by Carlos Gil Mendoza, Cadastral Surveyor, beginning April 18, 2018 and completed April 28, 2020, pursuant to Special Instructions dated April 10, 2018, Amended Special Instructions dated October 5, 2018 and Amended Special Instructions dated April 23, 2020 for Group No. 978, Nevada.

UNITED STATES DEPARTMENT OF THE INTERIOR
BUREAU OF LAND MANAGEMENT

Reno, Nevada May 8, 2020

This plat is strictly conformable to the approved field notes, and the survey, having been correctly executed in accordance with the requirements of law and the regulations of this Bureau, is hereby accepted.

For the Director

Michael O. Hammering

Chief Cadastral Surveyor for Nevada