

ORIGINAL

OFFICIALLY FILED
NEVADA STATE OFFICE
10:00 AM 9/14/1972

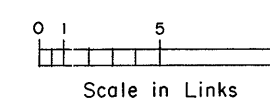
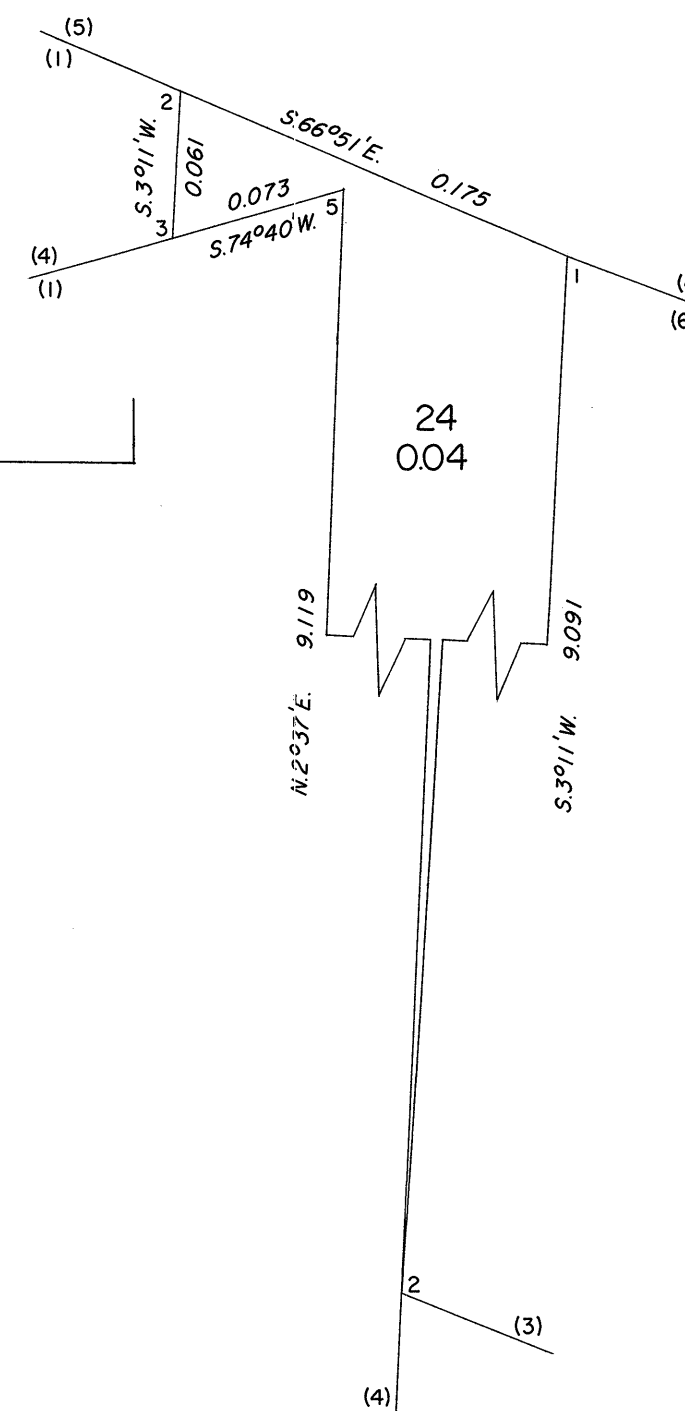
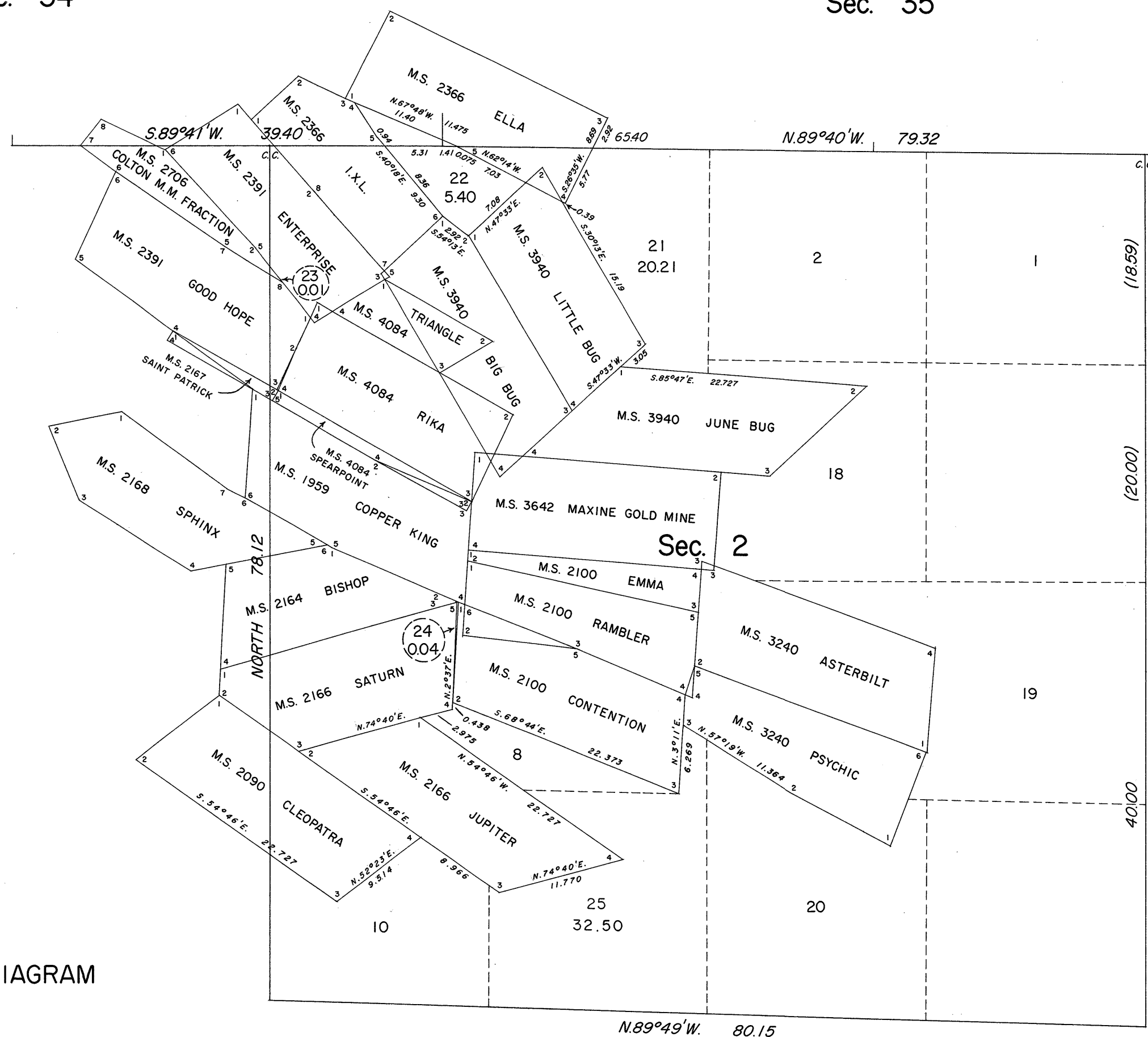
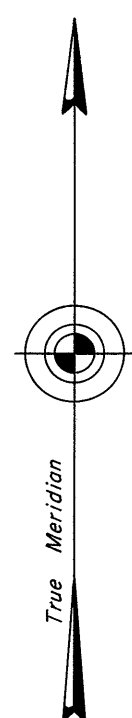
TOWNSHIP 29 SOUTH, RANGE 63 EAST, OF THE MOUNT DIABLO MERIDIAN, NEVADA

SUPPLEMENTAL PLAT OF SECTION 2

ENLARGED DIAGRAM

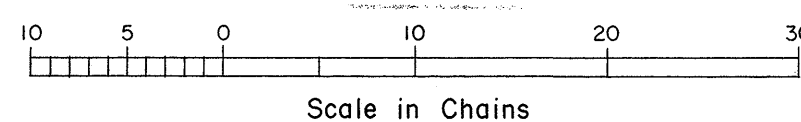
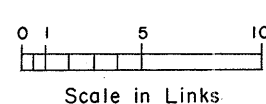
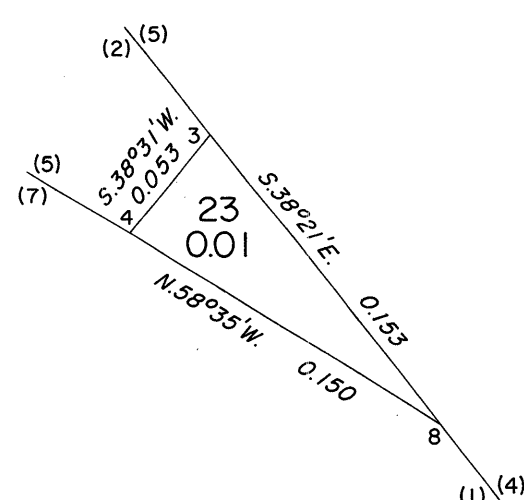
Sec. 34

Sec. 35



This supplemental plat, showing amended lottings in sec. 2, T. 29 S., R. 63 E., is based on the plats approved February 23, 1884, and May 28, 1904; the plat accepted August 27, 1952, and the approved mineral survey records.

ENLARGED DIAGRAM



UNITED STATES DEPARTMENT OF THE INTERIOR
BUREAU OF LAND MANAGEMENT
Washington, D.C. August 25, 1972

This plat, showing amended lottings, is based upon the official records and, having been correctly prepared in accordance with the regulations, is hereby accepted.

For the Director

Clark F. Summ

Chief, Division of Cadastral Survey