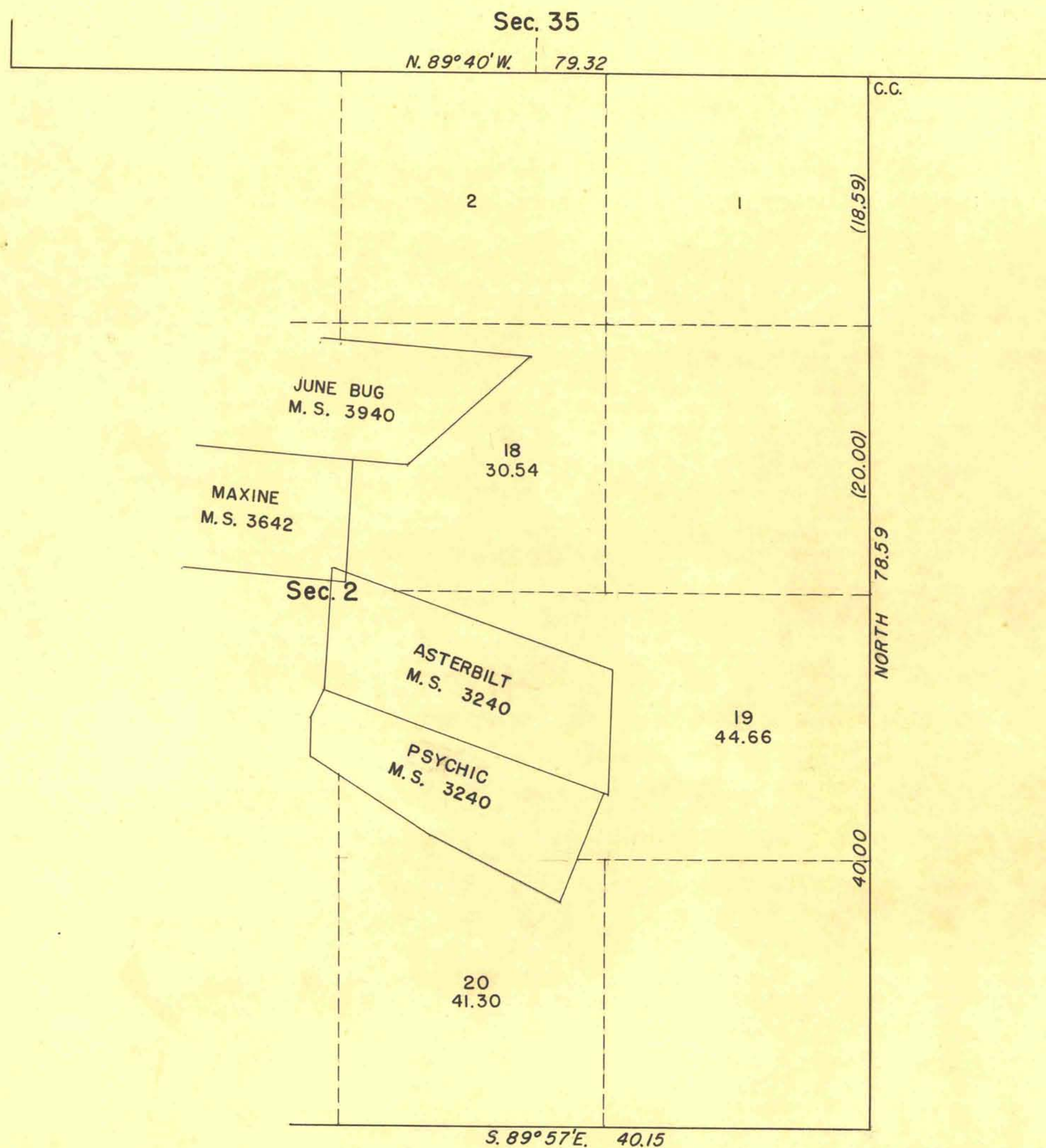
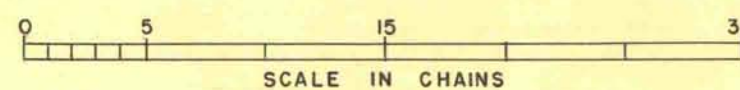


ORIGINAL

TOWNSHIP 29 SOUTH, RANGE 63 EAST, MOUNT DIABLO MERIDIAN, NEVADA.
SUPPLEMENTAL PLAT OF SECTION 2



This supplemental plat showing revised
lottings of the public land remaining
in the east half of sec. 2 is based
upon the plat of survey of T. 29 S.,
R. 63 E., approved February 23, 1884,
the plat of the dependent resurvey of
T. 28 S., R. 63 E., approved March 7,
1947 and accepted September 17, 1947,
and upon the official mineral survey
records.



UNITED STATES DEPARTMENT OF THE INTERIOR
BUREAU OF LAND MANAGEMENT
Washington, D. C., August 27, 1952

This plat showing amended lottings, having been correctly prepared
in accordance with the regulations, is hereby accepted.

For the Director

James B. Adams
Acting Chief, Division of
Cadastral Engineering

R.E.C.

2846a

T. 29 S. R. 63 E.