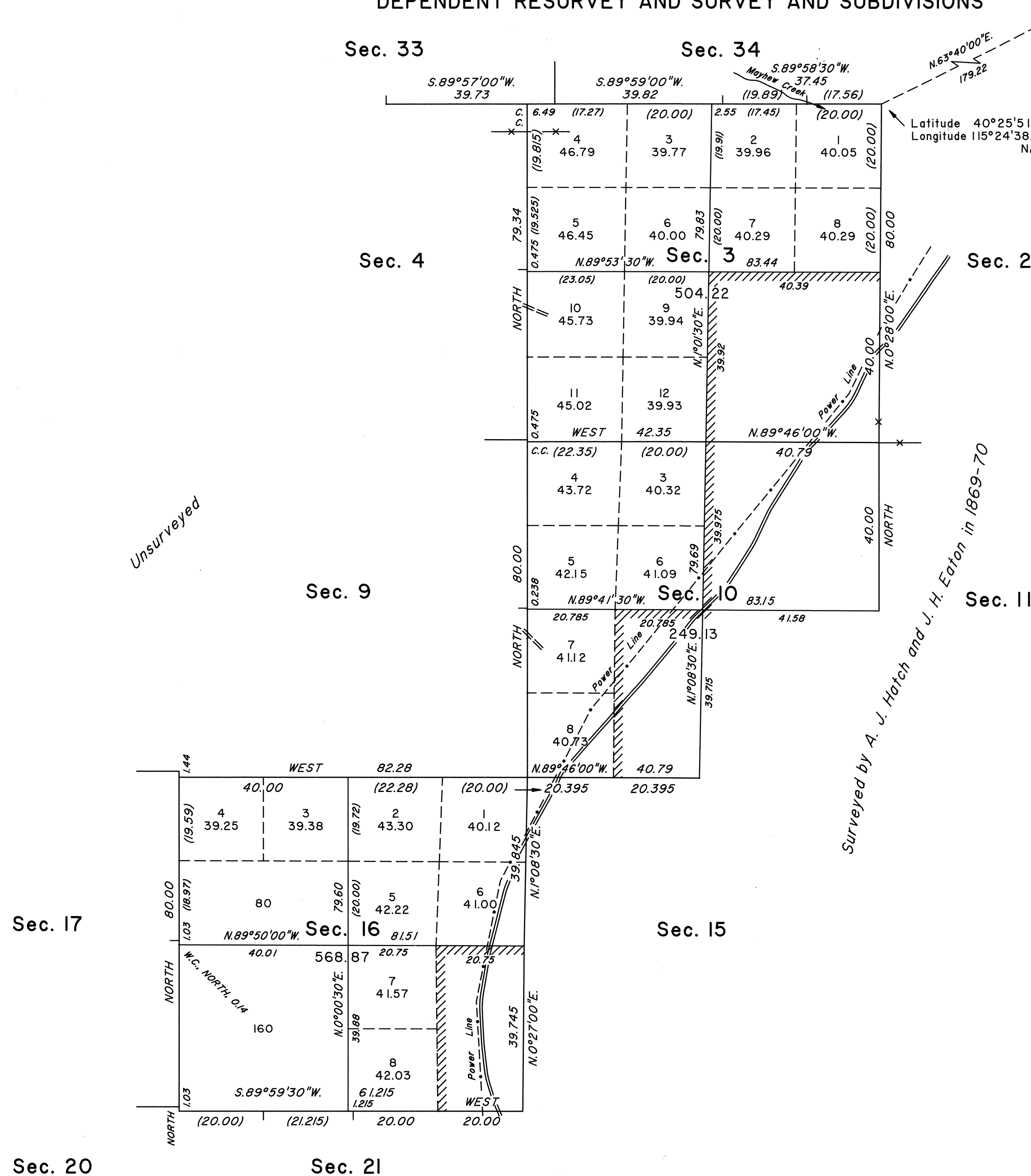
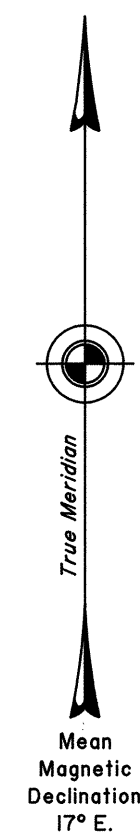


# TOWNSHIP 29 NORTH, RANGE 58 EAST, OF THE MOUNT DIABLO MERIDIAN, NEVADA

## DEPENDENT RESURVEY AND SURVEY AND SUBDIVISIONS



A history of surveys is contained in the field notes.

This plat, in two sheets, represents the dependent resurvey of a portion of the south boundary of Township 30 North, Range 58 East; and the dependent resurvey of a portion of the south boundary and a portion of the subdivisional lines, designed to restore the corners in their true original locations according to the best available evidence, and the survey of a portion of the south boundary, a portion of the subdivisional lines, and the subdivision of certain sections, Township 29 North, Range 58 East, Mount Diablo Meridian, Nevada.

Except as indicated hereon, the lottings and areas are as shown on the plat approved March 29, 1870.

Survey executed by Ronald E. Williams and Robert A. Pratt, Cadastral Surveyors, beginning June 30, 1993, and completed July 19, 1995, pursuant to Special Instructions dated June 17, 1993, and Supplemental Special Instructions dated September 15, 1993 and October 4, 1993, for Group No. 737, Nevada.

UNITED STATES DEPARTMENT OF THE INTERIOR  
BUREAU OF LAND MANAGEMENT

Reno, Nevada October 19, 1995

This plat is strictly conformable to the approved field notes, and the survey, having been correctly executed in accordance with the requirements of law and the regulations of this Bureau, is hereby accepted.

For the Director

*Robert H. Thompson*

Acting Chief Cadastral Surveyor, Nevada

