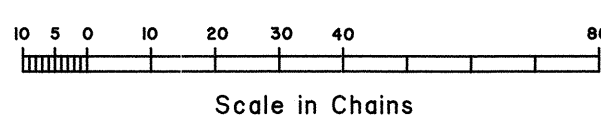
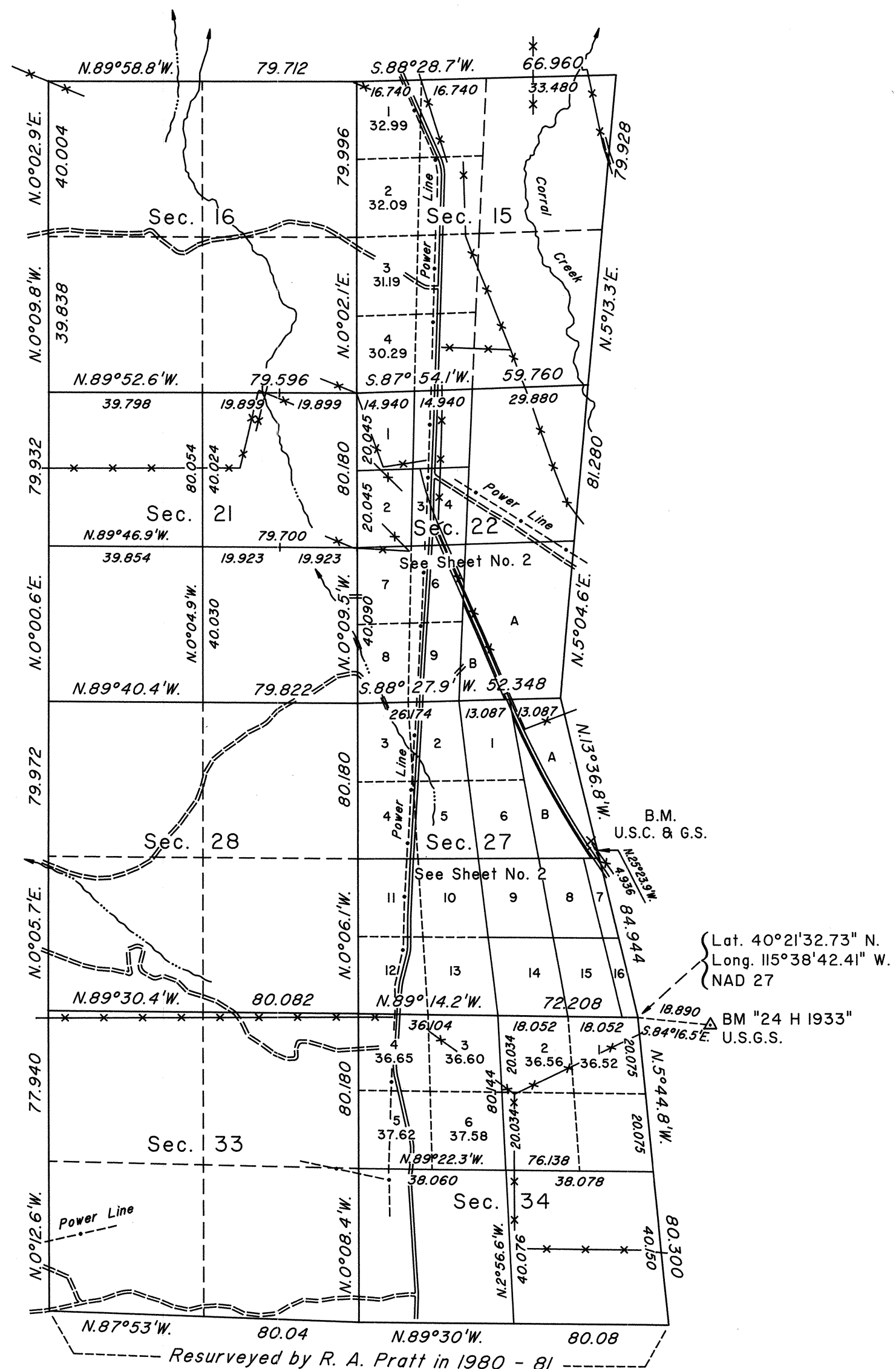
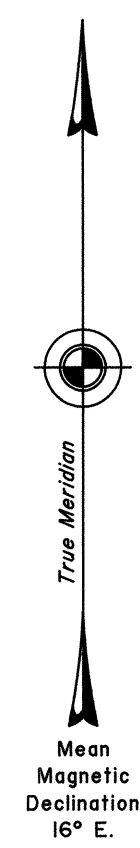


# TOWNSHIP 29 NORTH, RANGE 56 EAST, OF THE MOUNT DIABLO MERIDIAN, NEVADA

## DEPENDENT RESURVEY AND SUBDIVISION

OFFICIALLY FILED  
NEVADA STATE OFFICE  
at 10:00 AM on March 10, 1994



History of earlier surveys is contained in the field notes.

This plat represents the dependent resurvey of a portion of the subdivisional lines, designed to restore the corners in their original locations according to the best available evidence; the subdivision of certain sections, and the metes-and-bounds survey of Parcels A and B, and Lots 4 and 5 in section 22, and Parcels A and B, and Lots 7 and 16 in section 27, T. 29 N., R. 56 E., Mount Diablo Meridian, Nevada.

Areas, except as shown hereon, are as indicated on the plat approved October 26, 1872.

Survey executed by Robert A. Pratt, Cadastral Surveyor, and Robert H. Thompson, Supervisory Cadastral Surveyor, beginning May 7, 1992, and completed January 20, 1994, under Special Instructions dated July 14, 1992 and Supplemental Special Instructions dated June 2, 1993 and January 14, 1994, for Group No. 720, Nevada.

Lat. 40°21'32.73" N.  
Long. 115°38'42.41" W.  
NAD 27

BM "24 H 1933"  
U.S.G.S.

UNITED STATES DEPARTMENT OF THE INTERIOR  
BUREAU OF LAND MANAGEMENT

Reno, Nevada March 7, 1994

This plat is strictly conformable to the approved field notes, and the survey, having been correctly executed in accordance with the requirements of law and the regulations of this Bureau, is hereby accepted.

For the Director

*John S. Parrish*

Chief Cadastral Surveyor, Nevada

R&G/CS

RHT

T.29N., R.56E., M.D.M.