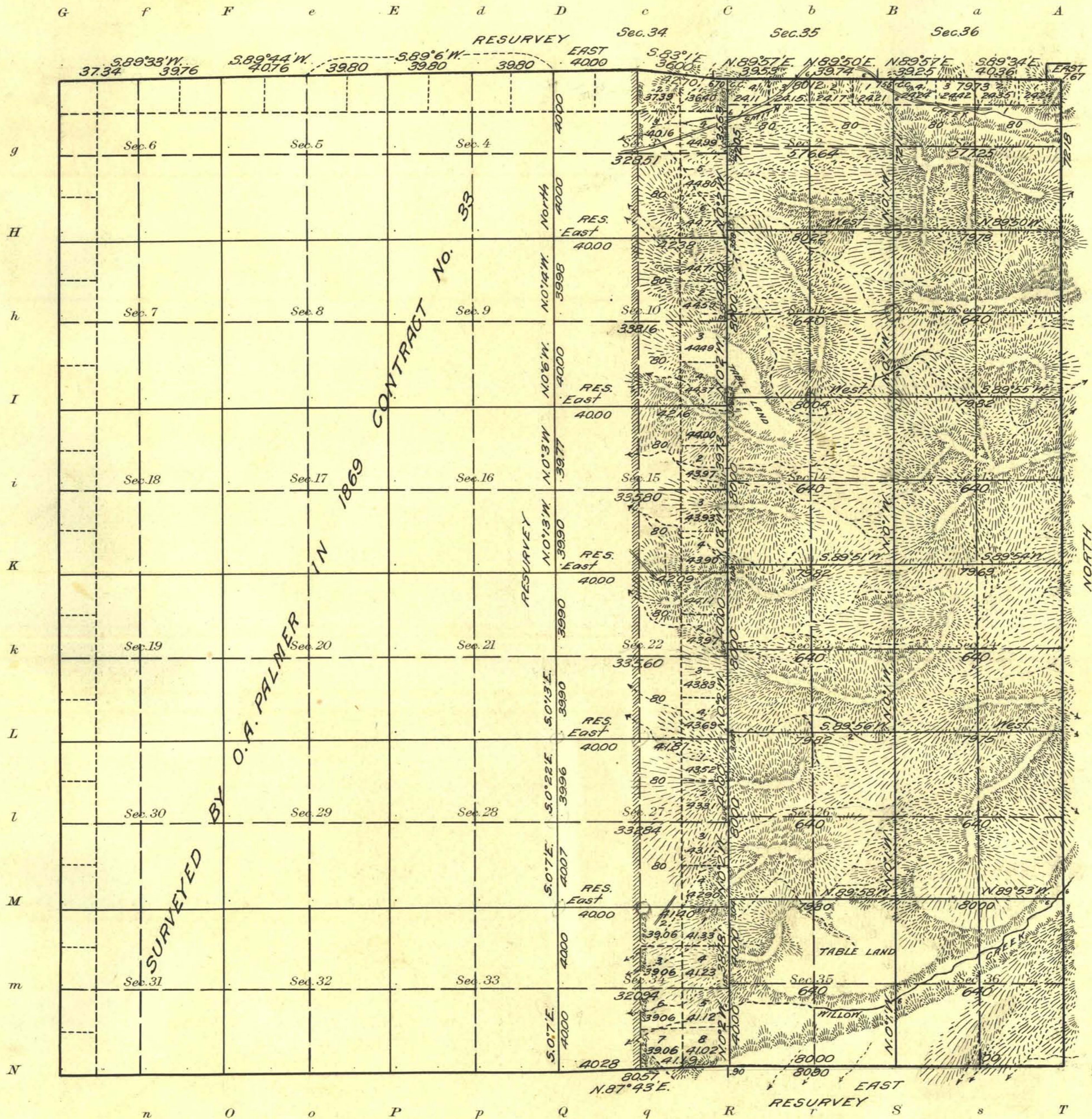


Township No 29 North Range No 52 East Mt Diablo Meridian, Nevada

Survey Accepted September 25, 1917
G.L.O.



Areas in Acres	
Public Land	9545.74
Indian Reservation	
Indian Allotments	
Mineral Claims	
Water Surface	
Total Area	9545.84

Scale 40 Chains to an inch
Mean Magnetic Declination 18°15'E.
Latitude 40°13'N.
Longitude 116°04'W.

Surveys Designated	By Whom Surveyed	Group No. Title of Instructions March 23, 1914	Amount of Surveys			When Surveyed	
			Mls.	chs.	lcs.	Began	Completed
North Boundary Res.	Winfred A. Pray	28	5	79	81	June 7, 1915	July 20, 1915
East Boundary			5	72	13	June 10, 1915	June 11, 1915
South Boundary Res.			3	01	47	June 1, 1915	June 2, 1915
Subdivision Res.			8	39	48	June 3, 1915	June 9, 1915
Subdivision			24	32	74	June 12, 1915	June 19, 1915

The above map of Township No. 29 North Range No. 52 East of the Mt. Diablo Meridian Nevada is strictly conformable to the field notes of the survey thereof on file in this office, which have been examined and approved

U. S. Surveyor General's Office.
Reno, Nevada, April 13, 1917.

John B. Sullivan
Surveyor General.