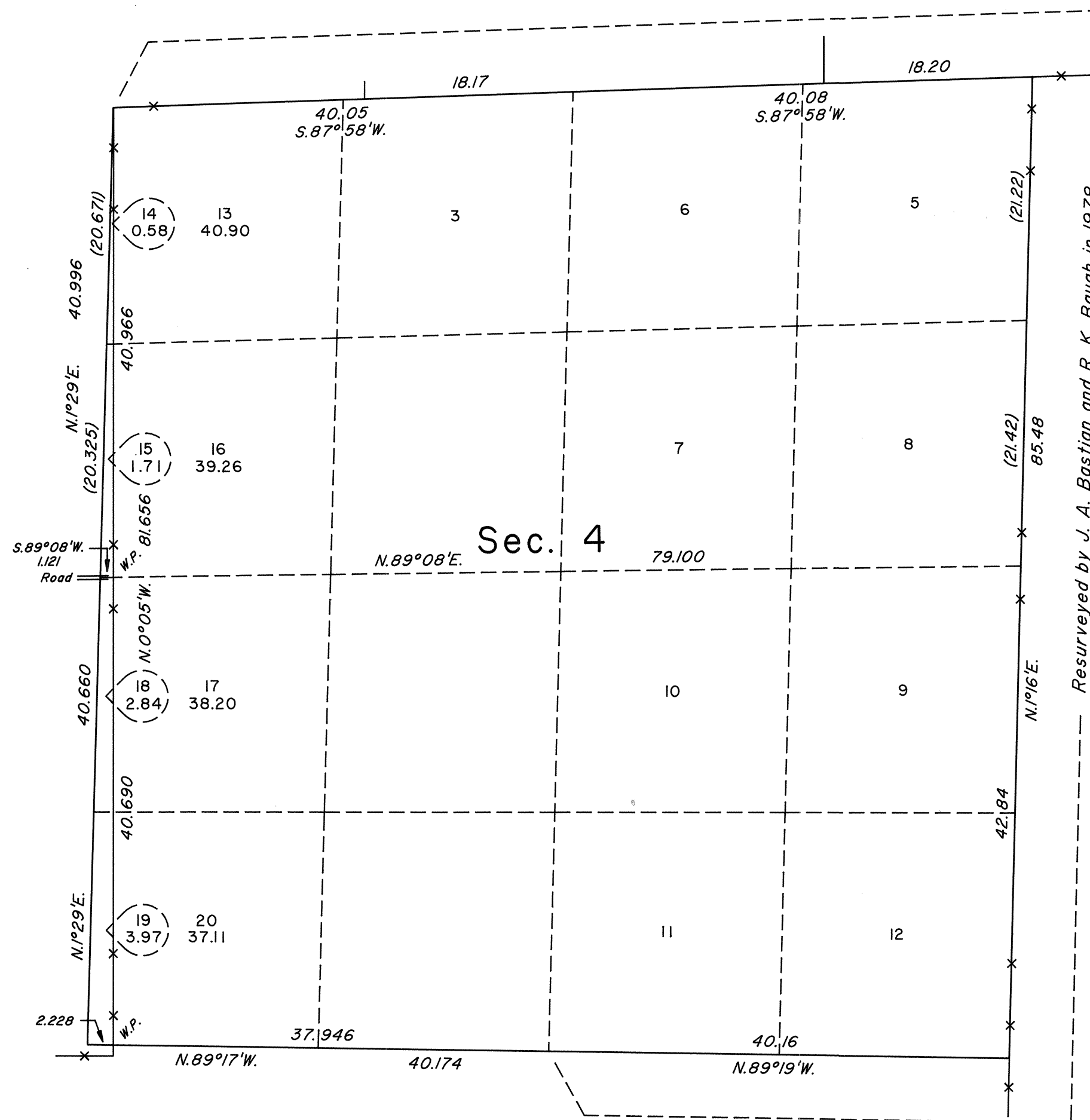
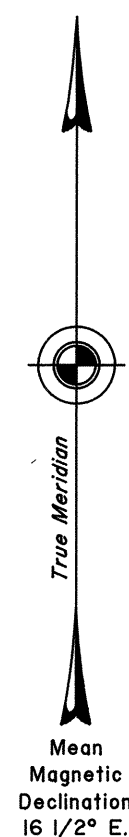


TOWNSHIP 29 NORTH, RANGE 48 EAST, OF THE MOUNT DIABLO MERIDIAN, NEVADA
DEPENDENT RESURVEY AND METES-AND-BOUNDS SURVEY

Sec. 33

Sec. 34



A history of surveys is contained in the field notes.

This plat represents the dependent resurvey of a portion of the subdivisional lines designed to restore the corners in their true original locations according to the best available evidence, and a metes-and-bounds survey in section 4, Township 29 North, Range 48 East, Mount Diablo Meridian, Nevada.

Except as indicated hereon, the lottings and areas are as shown on the plat approved June 30, 1881 and the plat accepted July 24, 1980.

Survey executed by Richard A. Zaninovich, Cadastral Surveyor, beginning October 22, 1996, and completed October 23, 1996, pursuant to Special Instructions dated October 18, 1996, for Group No. 766, Nevada.

UNITED STATES DEPARTMENT OF THE INTERIOR
BUREAU OF LAND MANAGEMENT

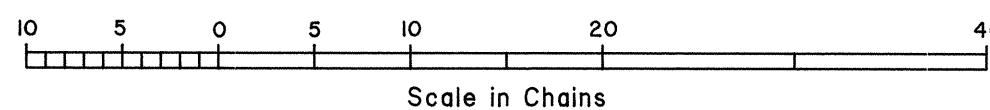
Reno, Nevada June 17, 1997

This plat is strictly conformable to the approved field notes, and the survey, having been correctly executed in accordance with the requirements of law and the regulations of this Bureau, is hereby accepted.

For the Director

Robert H. Thompson

Acting Chief Cadastral Surveyor, Nevada



T.29N., R.48E., M.D.M.