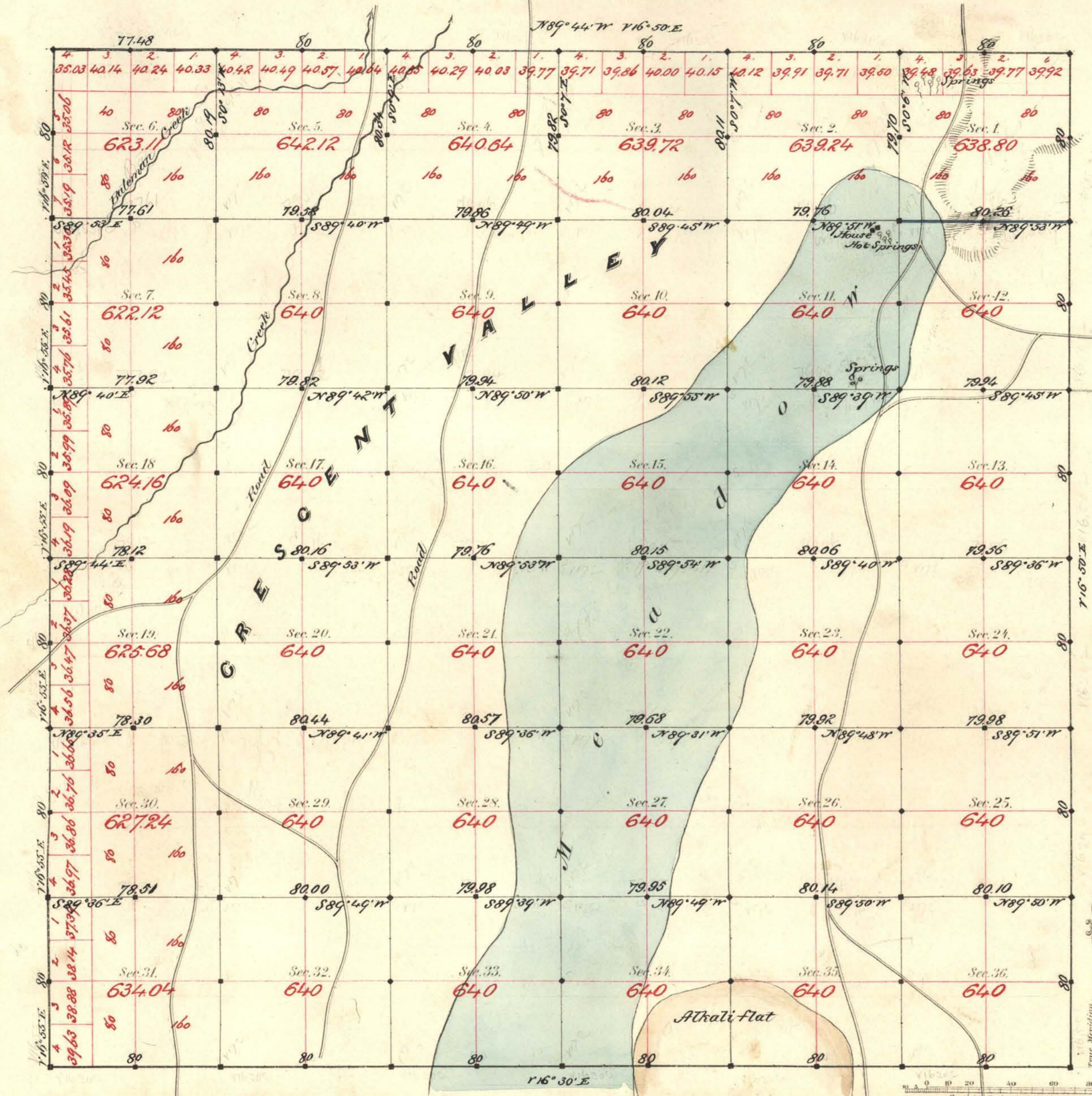


TOWNSHIP N° 29 NORTH RANGE N° 48 EAST MOUNT DIABLO MERIDIAN



Aggregate Area of Public Land Surveyed 22,956.87 Acs.

Bound Cont 222

Commenced May 23rd 1891  
Completed " 29th "

Subdivisions run with a Var. of 17° East

Survey Designated	By Whom Surveyed	Date of Contract	Amount of Surveys	When Surveyed
S. 1 day	Walsh & Colton	Sept. 25th 1869	24 25 26	1869
S. 2 & 3 day	Burrows & Colton	July 15th 1879	17 77 48	1879
Subdivisions Block	Monroe & McCallum	March 25th 1881	58 70 01	1881
"	"	"	1 00 25	"

N° Cont.  
80  
89  
180  
"

The above Map of Township N° 29 North of Range N° 48 East  
Mt Diablo Meridian is strictly conformable to the field  
notes of the survey thereof on file in this Office, which have been examined and approved.  
Surveyor General's Office,  
Virginia City, Nev.  
June 30th 1881

J. S. Davis  
Sur. Gen.