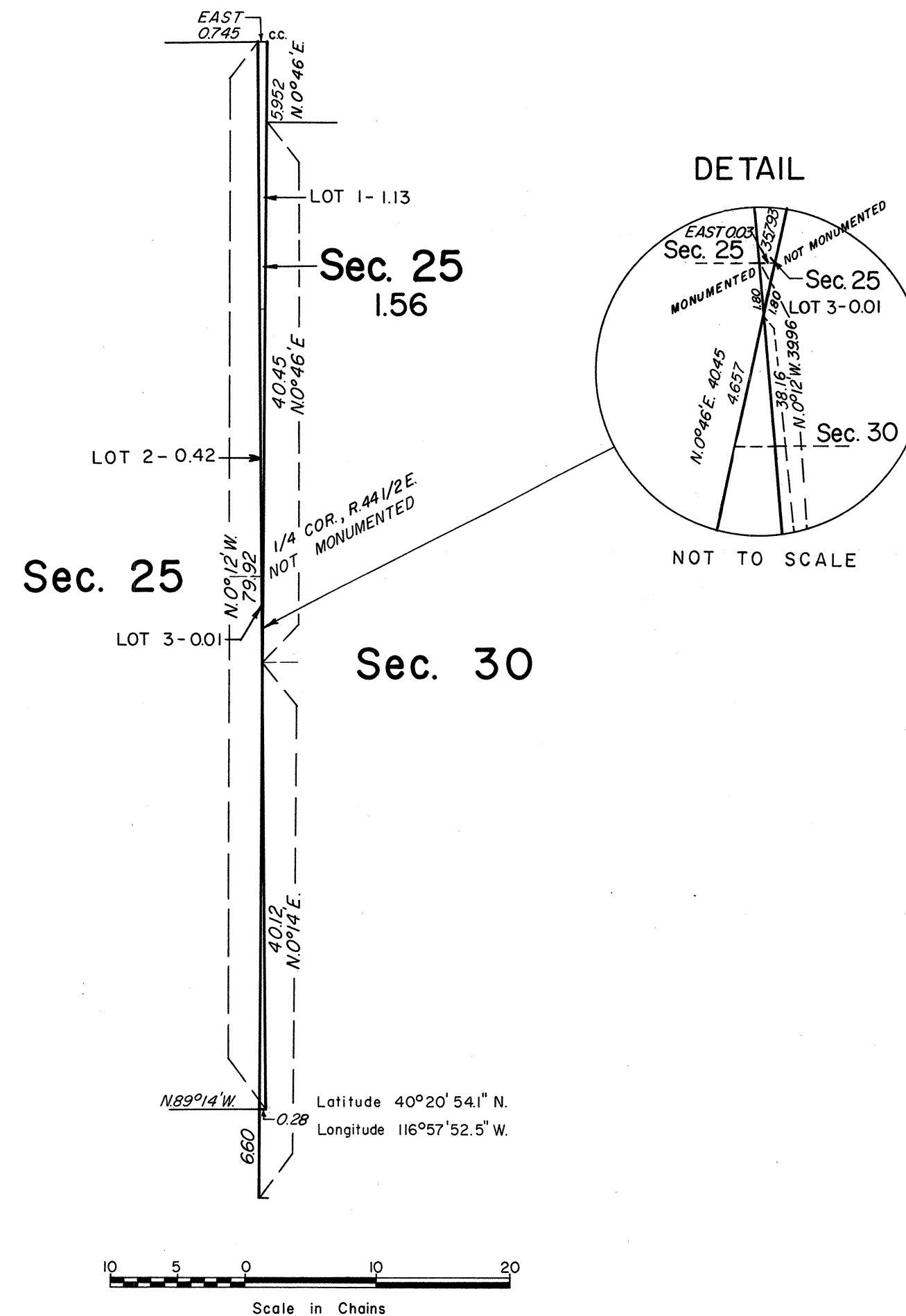
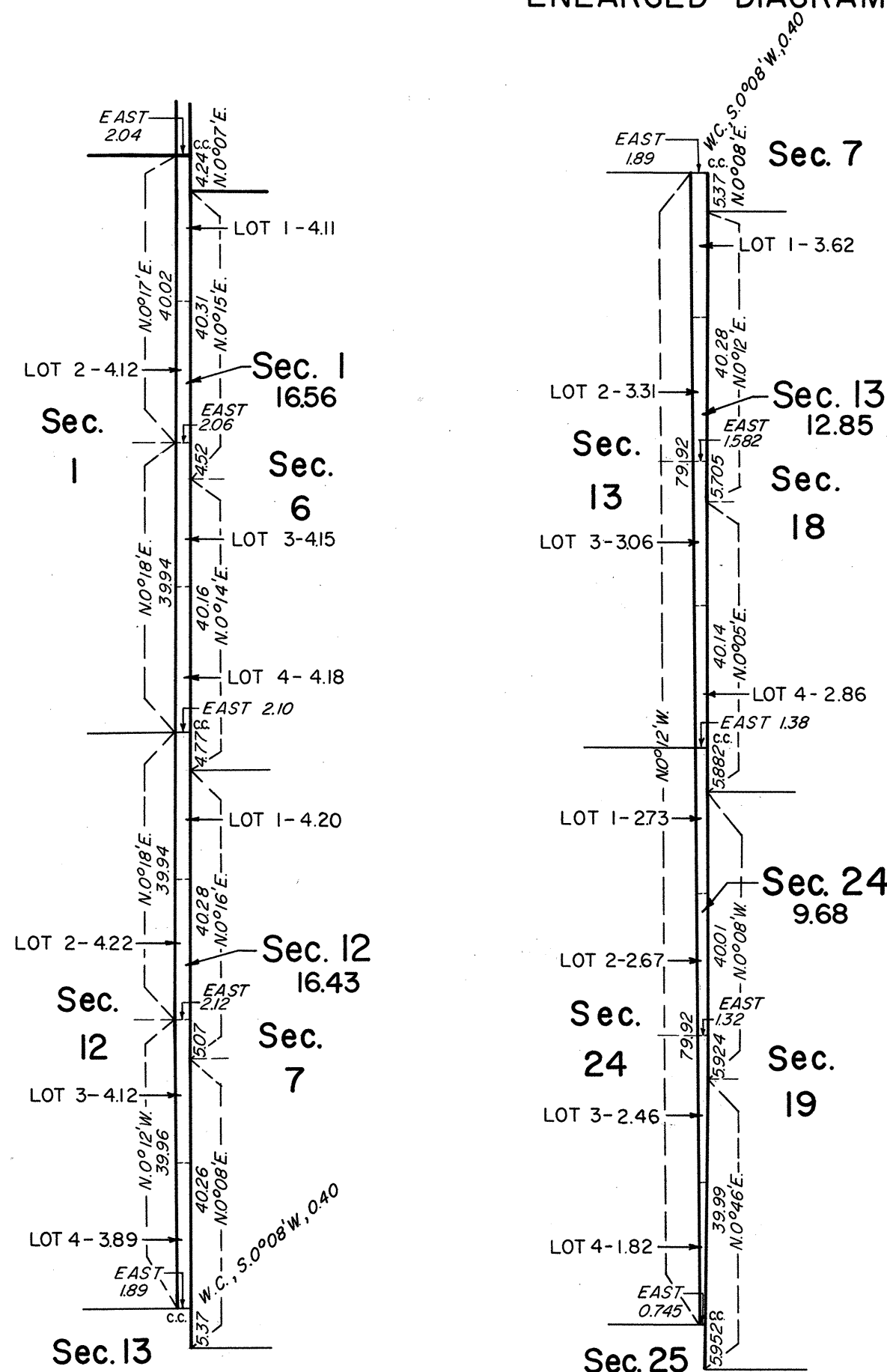
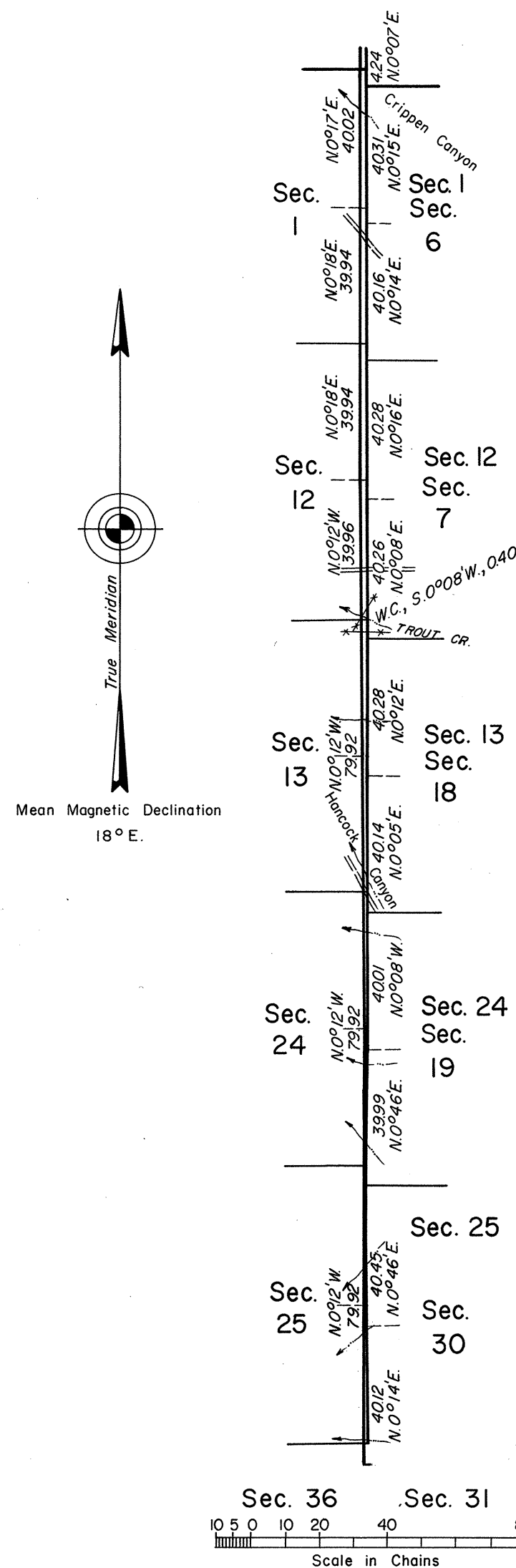


TOWNSHIP 29 NORTH, RANGE 44 1/2 EAST, OF THE MOUNT DIABLO MERIDIAN NEVADA.

A history of the earlier surveys is contained in the field notes.

This plat represents the survey of the subdivisional lines of T. 29 N., R. 44 1/2 E., executed by James R. Munson, Cadastral Surveyor, July 15, 1968, to November 5, 1968, under Special Instructions dated June 30, 1966, and Supplemental Special Instructions dated September 5, 1968, for Group No. 439, Nevada.

ENLARGED DIAGRAM



UNITED STATES DEPARTMENT OF THE INTERIOR  
BUREAU OF LAND MANAGEMENT  
Washington, D. C. January 15, 1971

This plat is strictly conformable to the approved field notes, and the survey, having been correctly executed in accordance with the requirements of law and the regulations of this Bureau, is hereby accepted.

For the Director

*Clark I. Sumner*

Chief, Division of Cadastral Survey