

TOWNSHIP 29 NORTH, RANGE 43 EAST, OF THE MOUNT DIABLO MERIDIAN, NEVADA

DEPENDENT RESURVEY

OFFICIALLY FILED
NEVADA LAND OFFICE
10:00 A.M. June 3, 1970

History of the earlier surveys is contained in the field notes.

A dependent resurvey of a portion of the north boundary was executed concurrently under T. 30 N., R. 43 E., of this group.

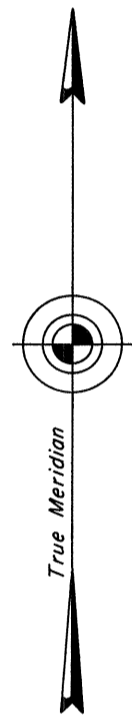
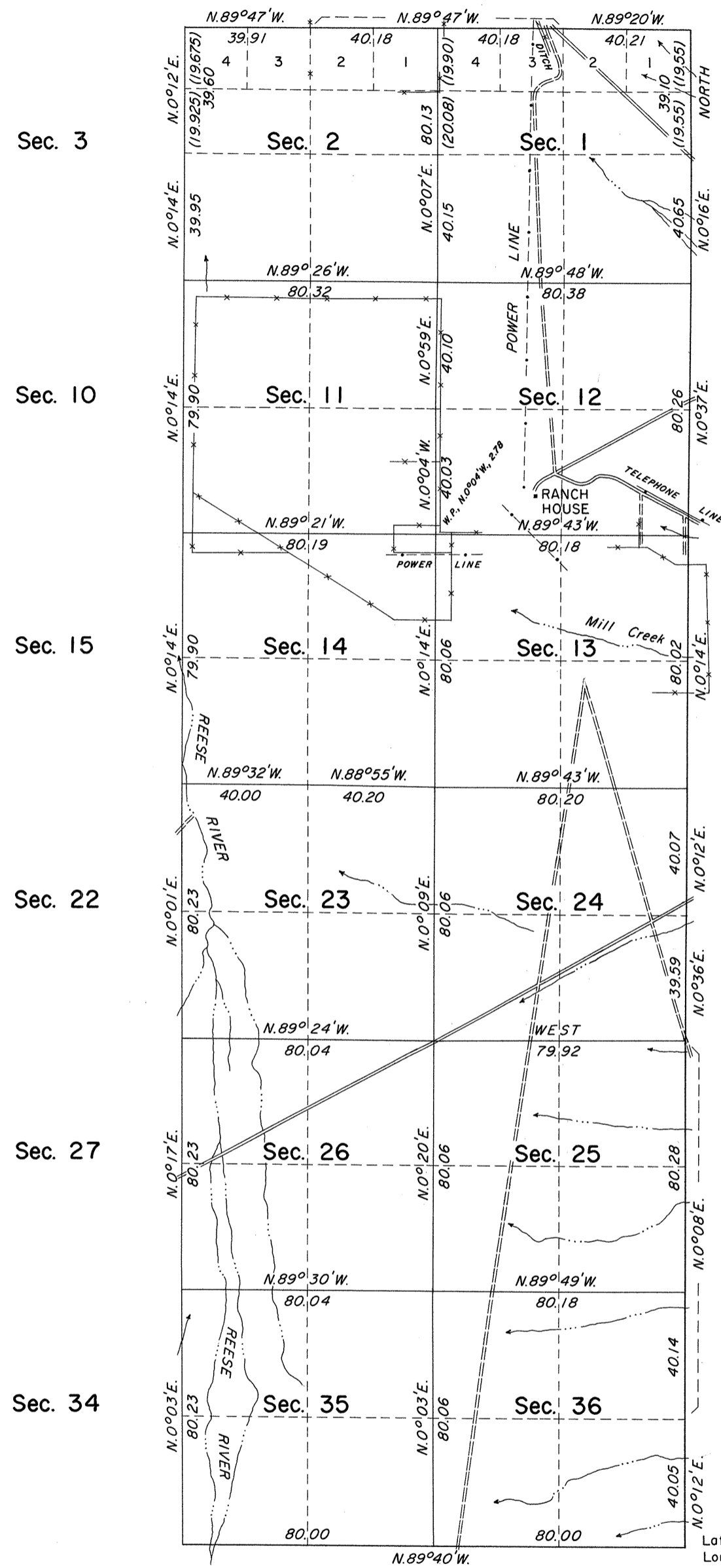
This plat represents a dependent resurvey of the east boundary and a portion of the subdivisional lines of T. 29 N., R. 43 E. The resurvey was designed to restore the corners in their true original locations according to the best available evidence.

Lottings and areas are as shown on the plat approved December 21, 1872.

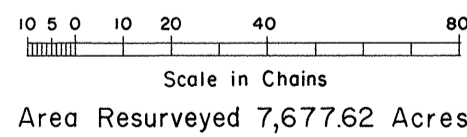
Survey executed by James R. Munson, Cadastral Surveyor, April 23, 1968, to May 24, 1968, under Special Instructions dated June 30, 1966, for Group No. 439, Nevada.

Surveyed by Reppert & Harris in 1914 & 1915

Surveyed by Woodrow H. Sylvester in 1959



Mean Magnetic Declination
18°E.



Resurveyed by Woodrow H. Sylvester in 1959

UNITED STATES DEPARTMENT OF THE INTERIOR
BUREAU OF LAND MANAGEMENT
Washington, D. C. April 27, 1970

This plat is strictly conformable to the approved field notes, and the survey, having been correctly executed in accordance with the requirements of law and the regulations of this Bureau, is hereby accepted.

For the Director

Chief, Division of Cadastral Survey

Latitude 40°20'03.0" N.
Longitude 117°04'42.1" W.

T29N R43E