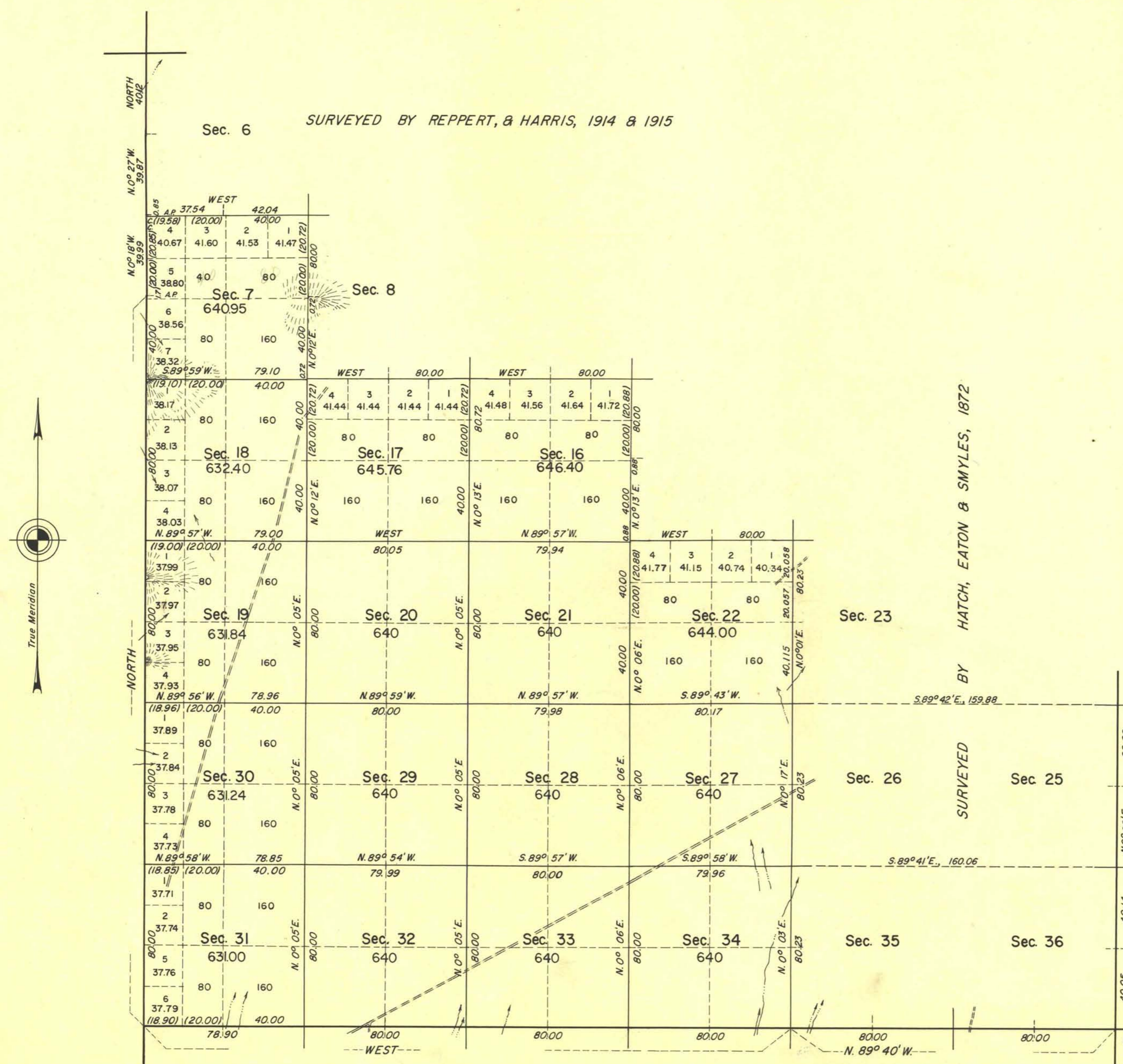


380

TOWNSHIP 29 NORTH, RANGE 43 EAST, OF THE MOUNT DIABLO MERIDIAN, NEVADA



This plat represents a retracement of portions of the east and west boundaries, a retracement and reestablishment of portions of the south boundary and subdivisional lines designed to restore all corners in their true original locations according to the best available evidence, an independent resurvey of portions of the south and west boundaries and completion survey of the subdivisional lines of T. 29 N., R. 43 E., Mount Diablo Meridian, Nevada.

As shown hereon the surveys and resurveys were executed by Woodrow H. Sylvester, from August 3, to August 31, 1959, under Special Instructions dated May 5, 1959, for Group 380, Nevada.

UNITED STATES DEPARTMENT OF THE INTERIOR
BUREAU OF LAND MANAGEMENT
Washington, D.C. January 10, 1962

This plat is strictly conformable to the approved field notes, and the survey, having been correctly executed in accordance with the requirements of law and the regulations of this Bureau, is hereby accepted.

For the Director

Chief, Division of Engineering

1491-a

T29N, R43E