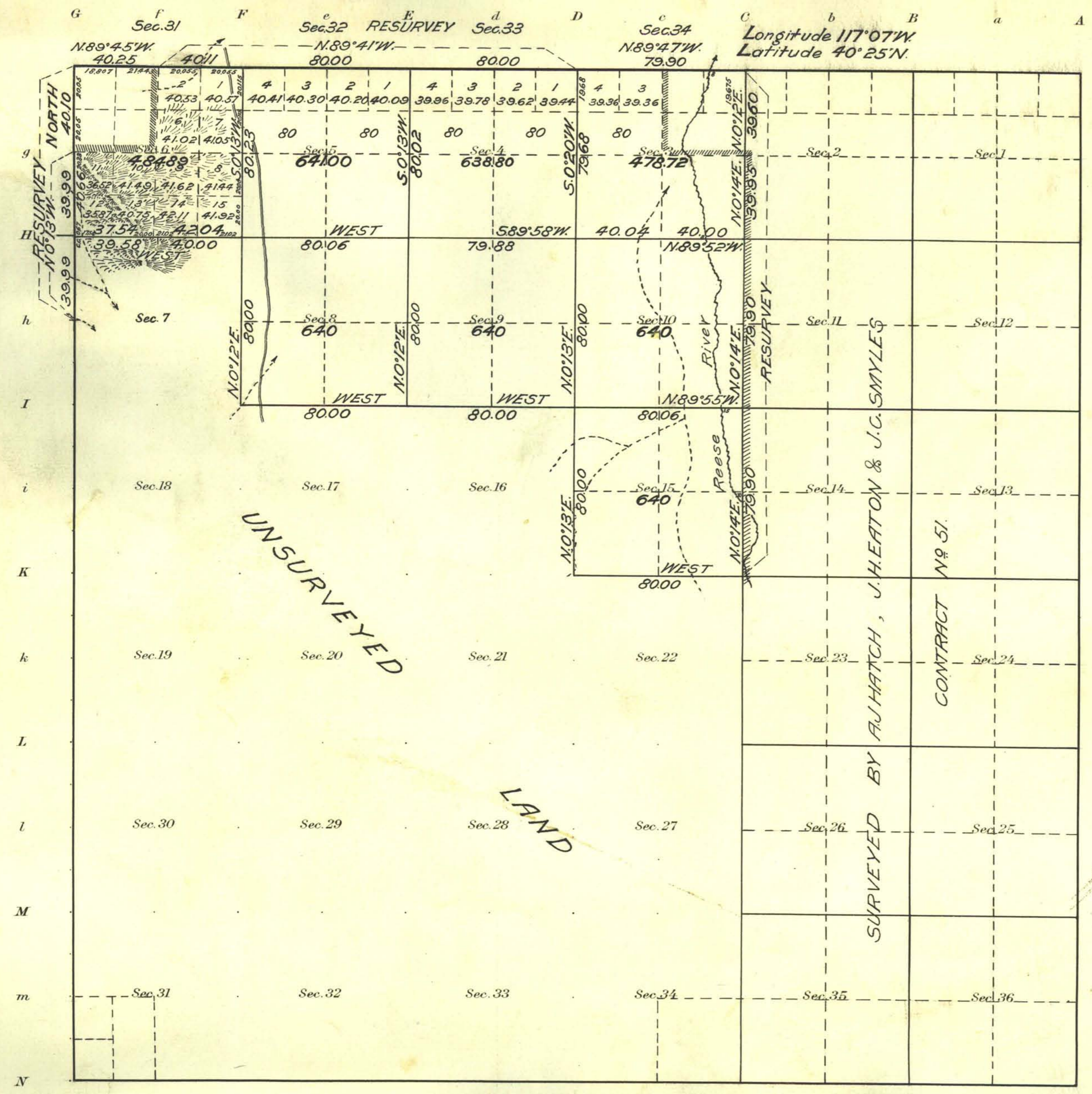


768P

(4-675a)

Township No. 29 North Range No. 43 East Mt. Diablo Meridian, Nevada.

Survey Accepted August 25, 1917
G.L.O.



NOTE
Some slight mineral indications are found in Section 6.

Areas in Acres	
Public Land	480341
Indian Reservation	
Indian Allotments	
Mineral Claims	
Water Surface	
Total Area	480341

Scale 40 Chains to an inch
Mean Magnetic Declination 18°15'E.

Surveys Designated	By Whom Surveyed	Group No.	Date of Instructions	Amount of Surveys			When Surveyed	
				Mts.	chs.	lks.	Begun	Completed
North Bdy Resur.	H. W. Reppert	25	March 6, 1913	4	00	26	June 30, 1914	June 30, 1914
West " "	A. T. Harris	"	March 8, 1915	1	40	08	July 1, "	July 1, "
Subdivisions "	H. W. Reppert	"	"	2	79	35	June 30, "	June 30, "
Subdivisions "	"	"	"	11	79	24	June 29, "	Mar. 25, 1915
Subdivisions	A. T. Harris	"	"	3	00	31	July 1, "	July 1, 1914

The above map of Township No. 29 North Range No. 43 East of the Mt. Diablo Meridian Nevada is strictly conformable to the field notes of the survey thereof on file in this office, which have been examined and approved
U.S. Surveyor General's Office.
Reno, Nevada, Jan. 30, 1917.

John B. Sullivan
Surveyor General.

T 29 N. R. 43 E.
FDSP