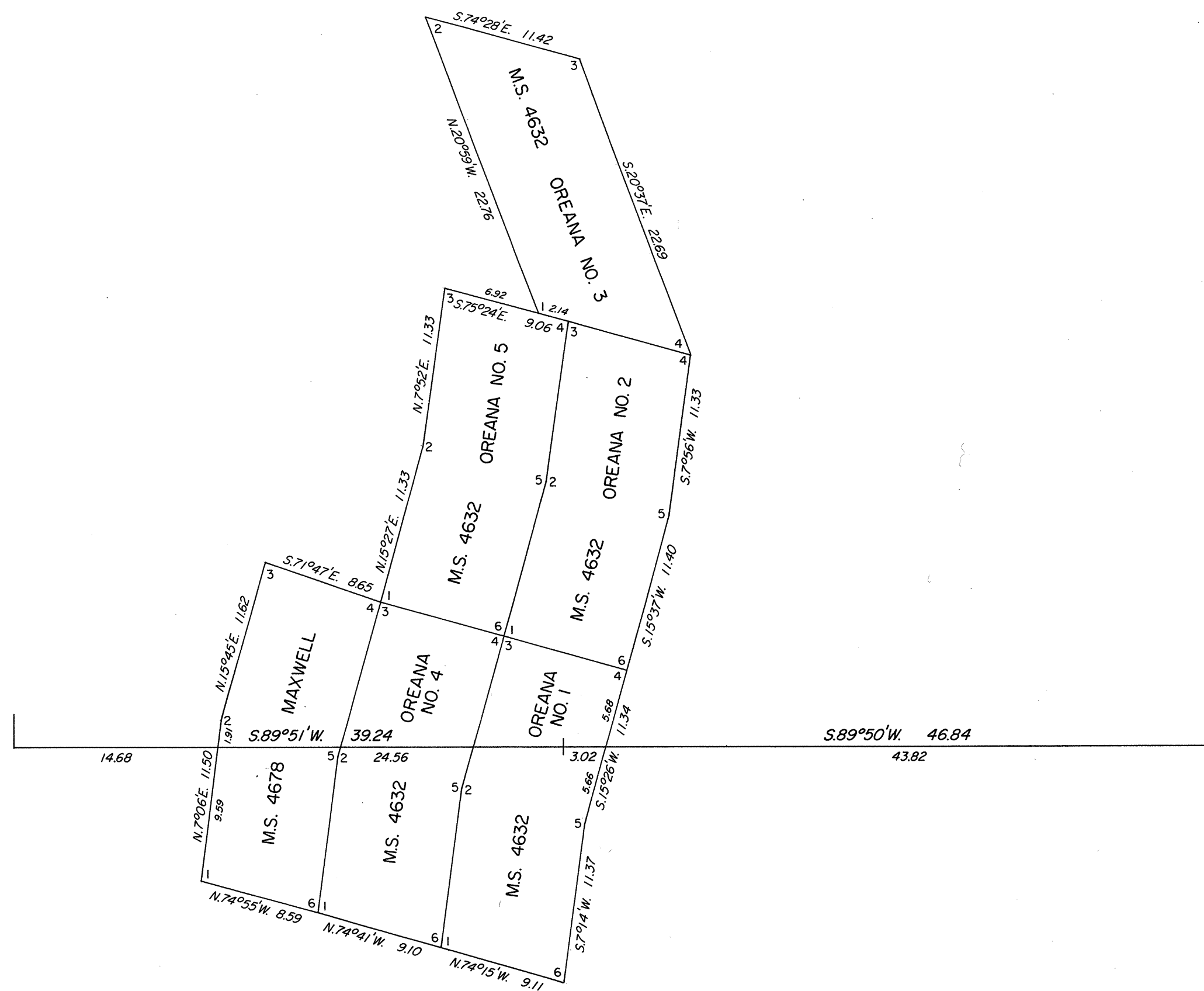


TOWNSHIP 29 NORTH, RANGE 33 EAST, OF THE MOUNT DIABLO MERIDIAN, NEVADA
ENLARGED DIAGRAM OF SECTION 36

OFFICIALLY FILED
NEVADA STATE OFFICE

10:00 AM October 5, 1978

Sec. 36



Reference should be made to Sheet No. 1 for survey information.

UNITED STATES DEPARTMENT OF THE INTERIOR
BUREAU OF LAND MANAGEMENT
Washington, D.C. August 31, 1978

This plat is strictly conformable to the approved field notes, and the survey, having been correctly executed in accordance with the requirements of law and the regulations of this Bureau, is hereby accepted.

For the Director

Bernard W. Halper
Chief, Division of Cadastral Survey

Sec. 1
T.28N., R.33E.

