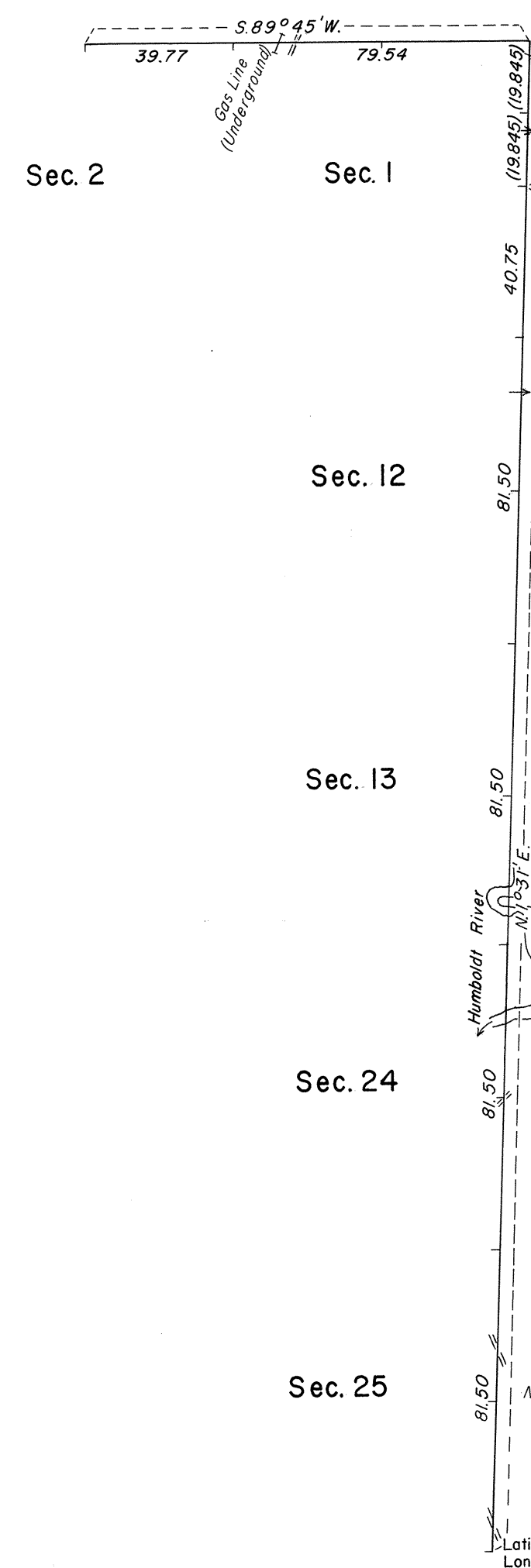


TOWNSHIP 29 NORTH, RANGE 32 EAST, OF THE MOUNT DIABLO MERIDIAN, NEVADA.

DEPENDENT RESURVEY



A history of surveys is contained in the field notes.

This plat represents a dependent resurvey of a portion of the east and north boundaries of T. 29 N., R. 32 E., designed to restore the corners in their true original locations according to the best available evidence.

Survey executed by James R. Munson, Cadastral Surveyor, October 6, 1975, to September 22, 1976, under Special Instructions dated April 30, 1975, for Group No. 523, Nevada.

UNITED STATES DEPARTMENT OF THE INTERIOR
BUREAU OF LAND MANAGEMENT
Washington, D.C. August 31, 1978

This plat is strictly conformable to the approved field notes, and the survey, having been correctly executed in accordance with the requirements of law and the regulations of this Bureau, is hereby accepted.

For the Director

Bernard W. J. J. J.
Chief, Division of Cadastral Survey

