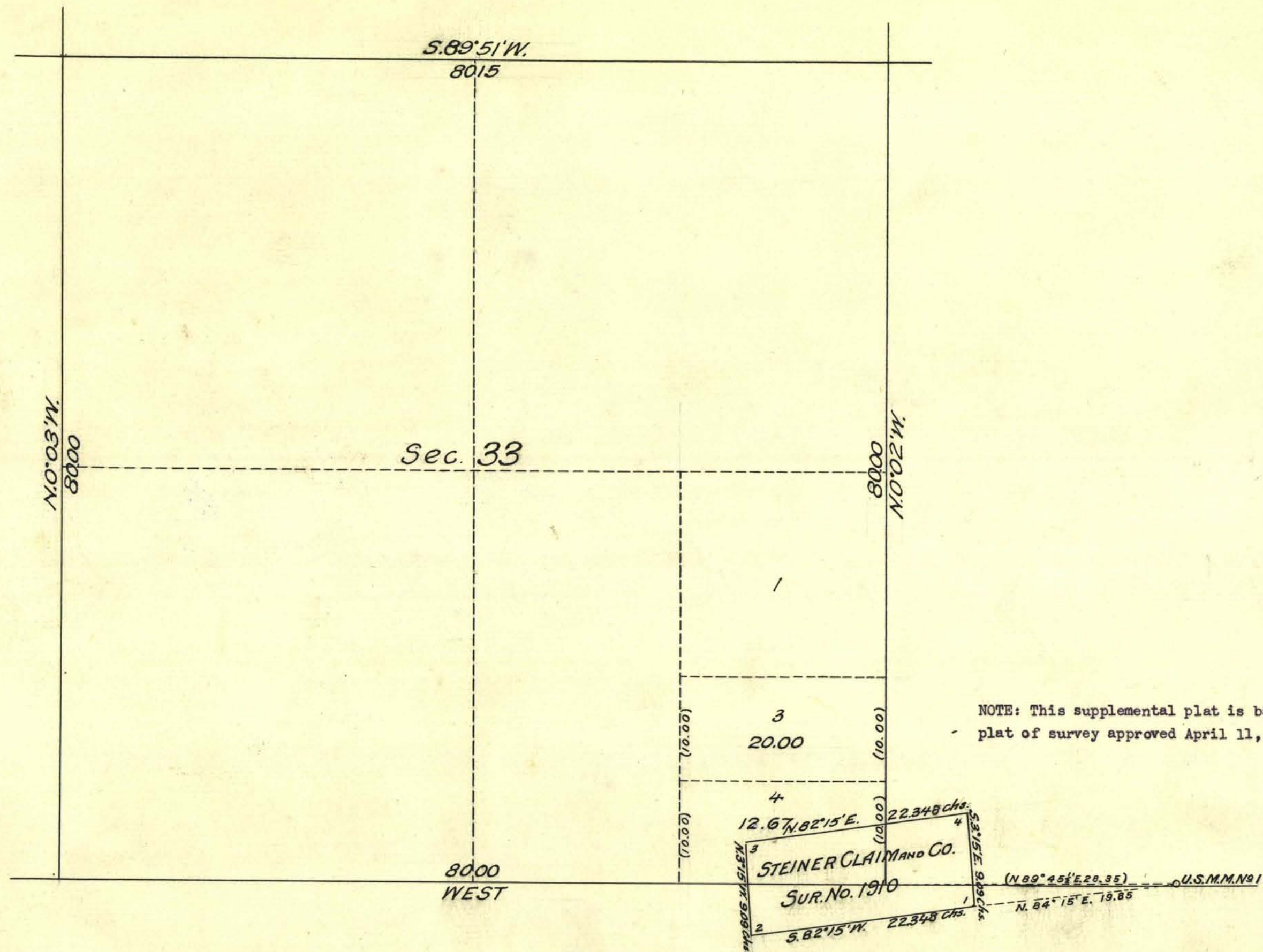


Supplemental Plat of Section 33 of Township N° 29 North Range N° 31 East M^t Diablo Meridian Nevada

Scale 10 chs. to 1 inch



Public Survey Office
Reno, Nevada, March 22, 1928

This supplemental plat of Sec. 33, T. 29 N., R. 31 E., M.D.M., has been prepared in compliance with instructions contained in letter Carson City 09883 "E" RWH, dated Feb. 21, 1928, from the Commissioner of the General Land Office, in order to accomodate selection list serial 09883 C.P.R.R., and the same is hereby approved.

Ralph W. Nelson
Office Cadastral Engineer

DEPARTMENT OF THE INTERIOR
GENERAL LAND OFFICE

Washington, D. C. May 8, 1928.

This supplemental plat having been prepared in accordance with instructions issued by this office, is hereby accepted.

W. H. C. Howell
Assistant Commissioner.