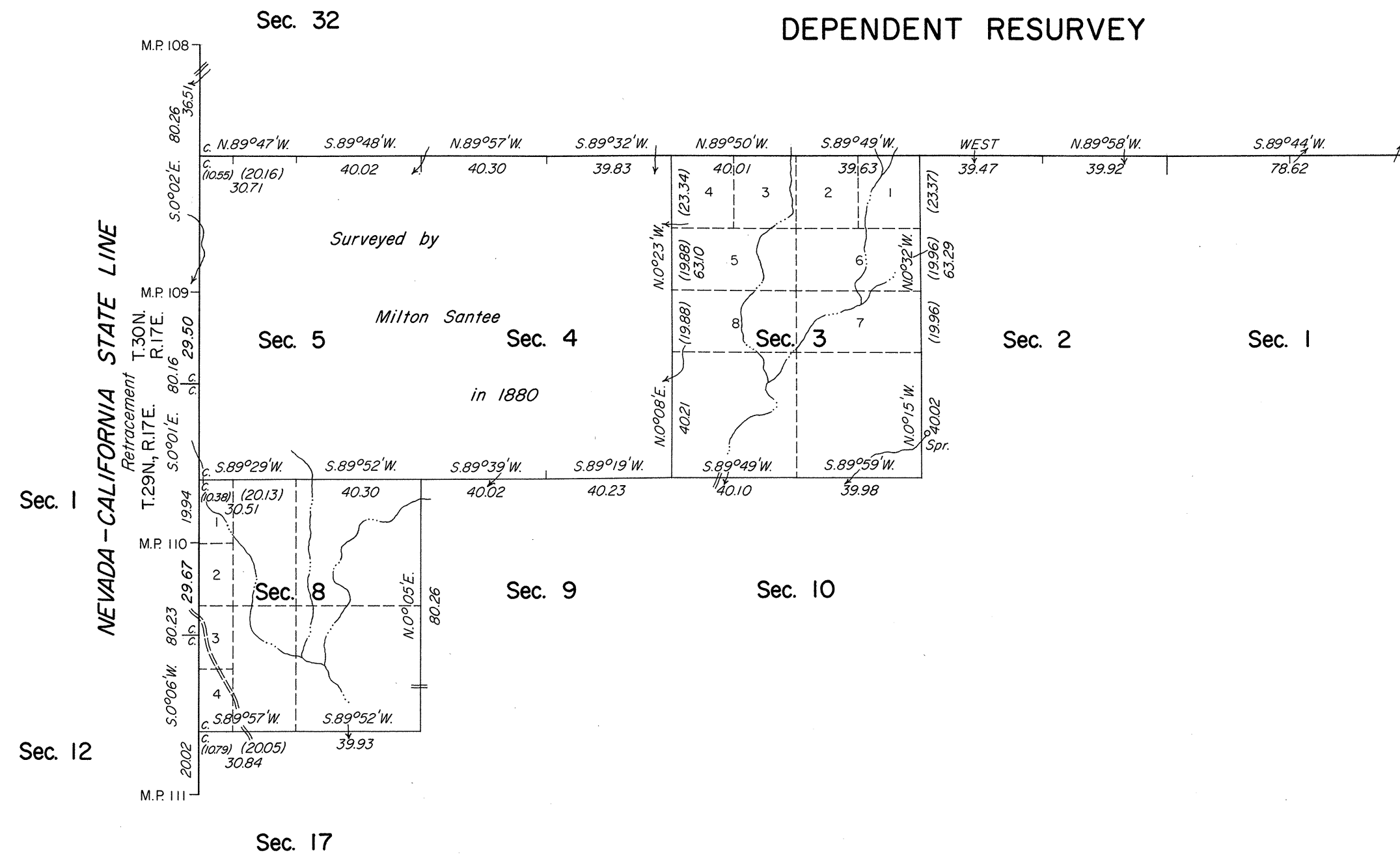


TOWNSHIP 29 NORTH, RANGE 18 EAST, OF THE MOUNT DIABLO MERIDIAN, NEVADA  
DEPENDENT RESURVEY

A history of surveys is contained in the field notes.

A retracement of the 109th mile on the Nevada-California State Line and a dependent resurvey of the north boundary was executed under T. 30 N., R. 18 E., of this Group.

This plat represents a retracement of the Nevada-California State Line between Mile Post Nos. 109 and 111, and the dependent resurvey of a portion of the south and east boundaries and a portion of the subdivisional lines of T. 29 N., R. 18 E., designed to restore the corners in their true original locations according to the best available evidence.

Lottings and areas are as shown on the plat approved February 8, 1881.

Survey executed by Neil R. Forsyth, Cadastral Surveyor, October 2 to October 9, 1973, under Special Instructions dated August 20, 1973, for Group No. 502, Nevada.

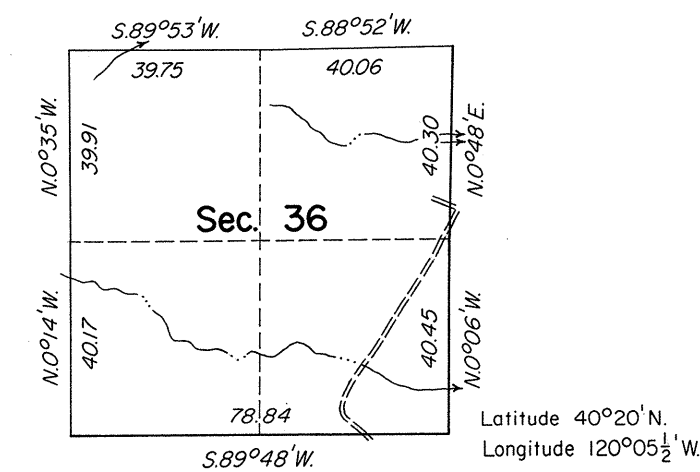
UNITED STATES DEPARTMENT OF THE INTERIOR  
BUREAU OF LAND MANAGEMENT  
Washington, D.C. May 27, 1976

This plat is strictly conformable to the approved field notes, and the survey, having been correctly executed in accordance with the requirements of law and the regulations of this Bureau, is hereby accepted.

For the Director

*Bernard W. Foster*  
Chief, Division of Cadastral Survey

Sec. 25



Scale in Chains