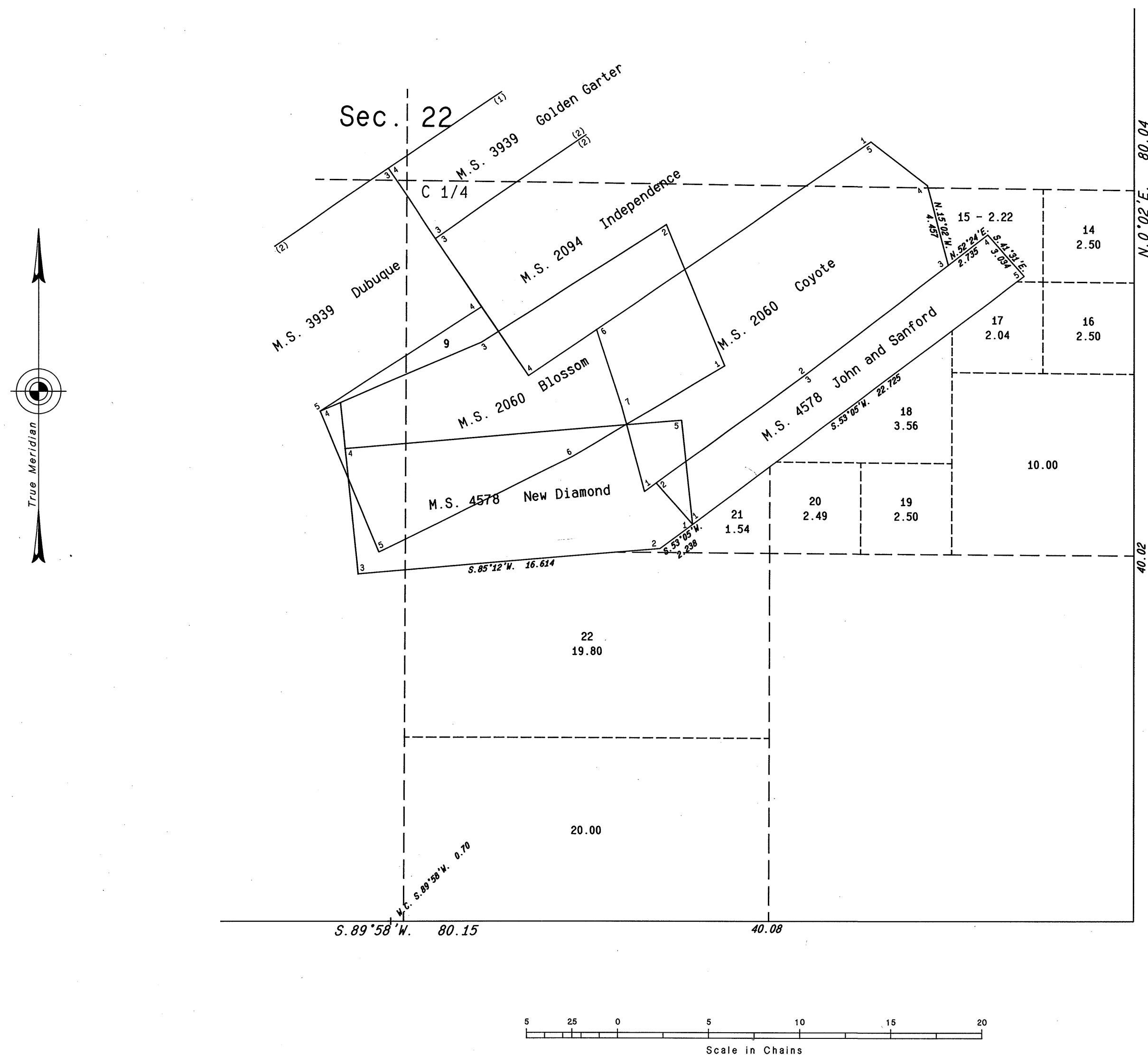


ORIGINAL

TOWNSHIP 28 SOUTH, RANGE 63 EAST, OF THE MOUNT DIABLO MERIDIAN, NEVADA
SUPPLEMENTAL PLAT OF THE SE1/4 OF SECTION 22



This plat, showing amended lottings in the SE1/4 of sec. 22, T. 28 S., R. 63 E., Mount Diablo Meridian, Nevada, is based upon the plat approved March 22, 1884, the plat approved March 7, 1947 and accepted September 17, 1947 and the mineral survey records.

UNITED STATES DEPARTMENT OF THE INTERIOR
BUREAU OF LAND MANAGEMENT

Reno, Nevada September 26, 1988

This plat, showing amended lottings, is based upon the official records and, having been correctly prepared in accordance with the regulations of this Bureau, is hereby accepted.

For the Director

Laurel E. Bland

Chief Cadastral Surveyor