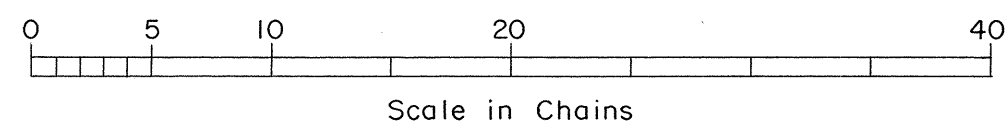
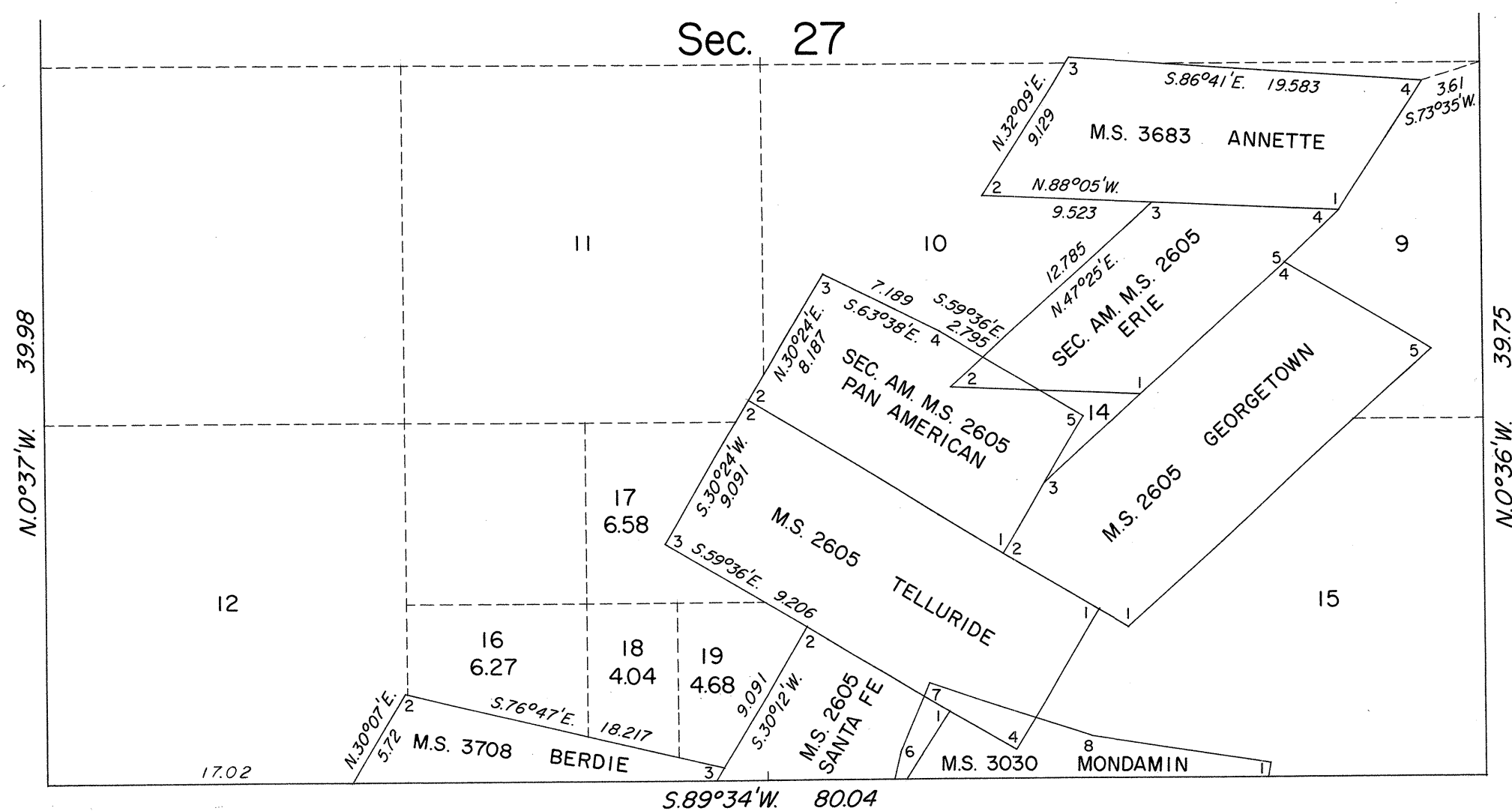
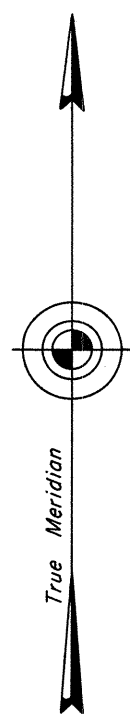


TOWNSHIP 28 SOUTH, RANGE 63 EAST, OF THE MOUNT DIABLO MERIDIAN, NEVADA
SUPPLEMENTAL PLAT OF SECTION 27



This supplemental plat, showing amended lottings in the S $\frac{1}{2}$ of section 27, T. 28 S., R. 63 E., is based upon the plat approved March 22, 1884, the plat accepted September 17, 1947 and the mineral survey records.

UNITED STATES DEPARTMENT OF THE INTERIOR
BUREAU OF LAND MANAGEMENT
Washington, D.C. February 22, 1972

This plat, showing amended lottings, is based upon the official records and, having been correctly prepared in accordance with the regulations, is hereby accepted.

For the Director

Clark F. Lumm

Chief, Division of Cadastral Survey