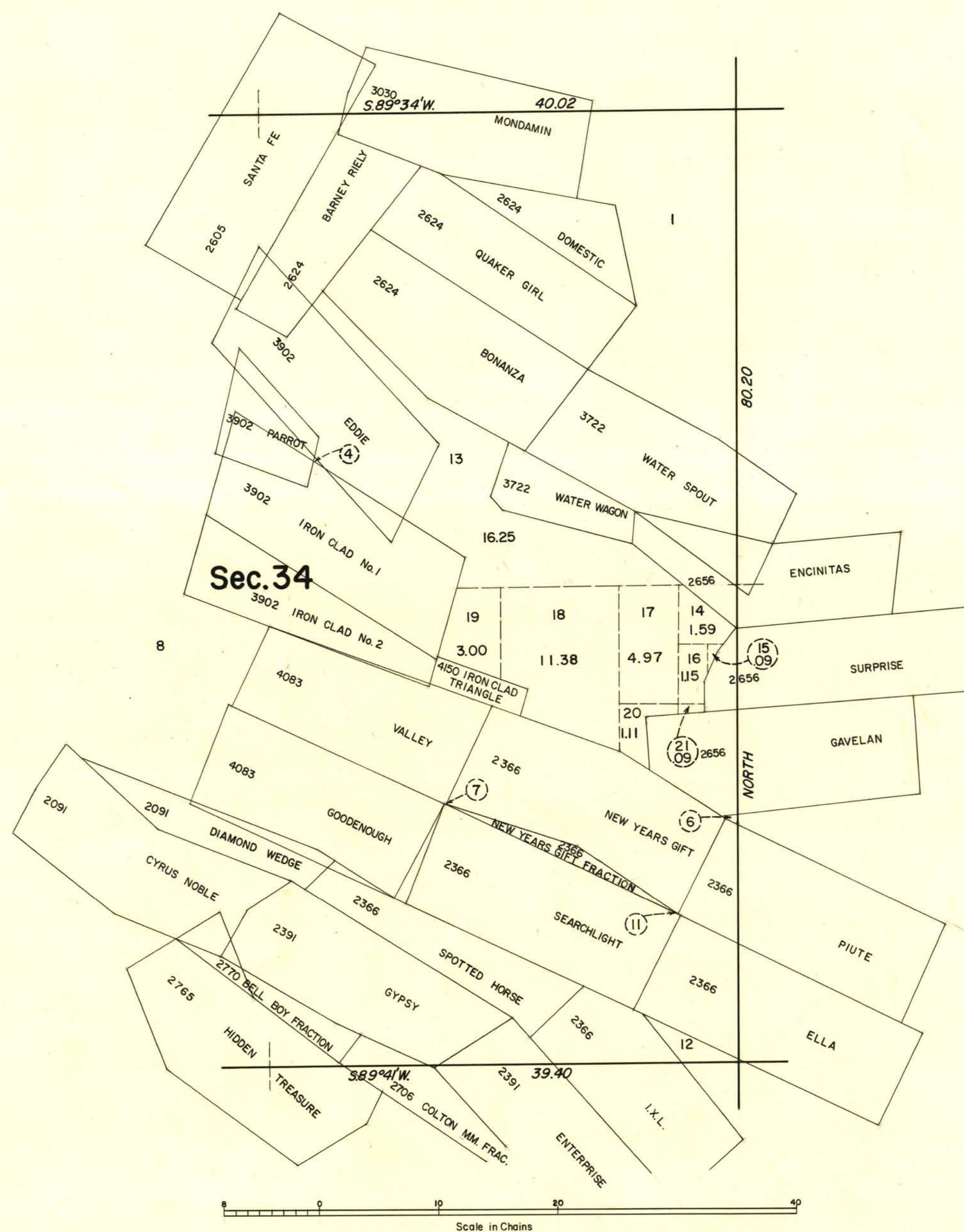


TOWNSHIP 28 SOUTH, RANGE 63 EAST, OF THE MOUNT DIABLO MERIDIAN, NEVADA.  
SUPPLEMENTAL PLAT OF SECTION 34



This supplemental plat of sec. 34,  
T. 28 S., R. 63 E., Mount Diablo  
Meridian, Nevada, showing the sub-  
division of lot 5, is based on plat  
approved March 7, 1947, accepted  
September 17, 1947, and the mineral  
survey records.

UNITED STATES DEPARTMENT OF THE INTERIOR  
BUREAU OF LAND MANAGEMENT  
Washington, D. C. February 3, 1960

This plat, showing amended lottings, is  
based upon the official records, and  
having been correctly prepared in accord-  
ance with the regulations, is hereby  
accepted.

For the Director

*Donald Clement*

Cadastral Engineering Staff Officer

2845a

S34, T28S, R63E.