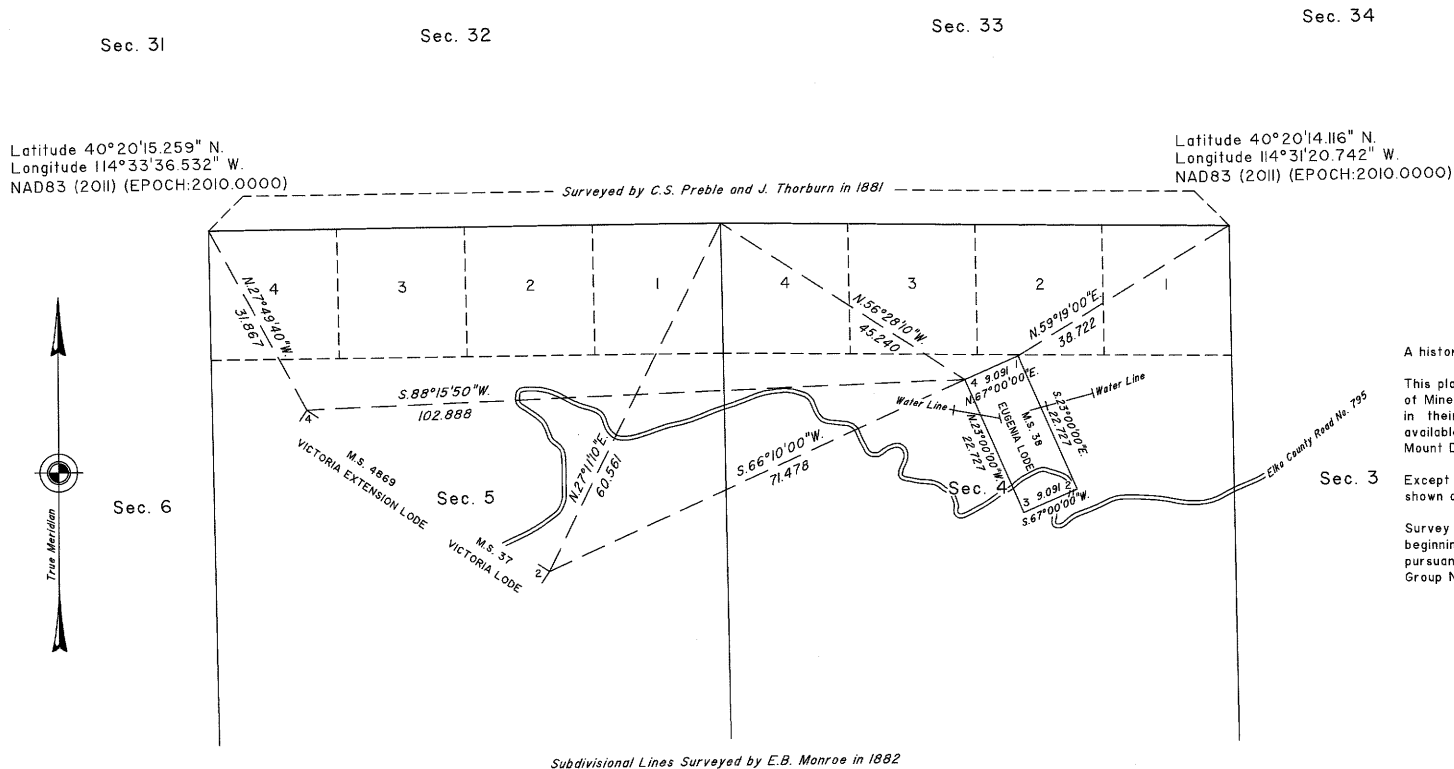


# TOWNSHIP 28 NORTH, RANGE 66 EAST, OF THE MOUNT DIABLO MERIDIAN, NEVADA

## DEPENDENT RESURVEY



A history of surveys is contained in the field notes.

This plat, in one sheet, represents the dependent resurvey of Mineral Survey No. 38, designed to restore the corners in their true original locations according to the best available evidence, Township 28 North, Range 66 East, Mount Diablo Meridian, Nevada.

Except as indicated hereon, the lottings and areas are as shown on the plat approved January 16, 1883.

Survey executed by Michael O. Jones, Cadastral Surveyor, beginning May 3, 2021, and completed October 27, 2022, pursuant to Special Instructions dated April 26, 2021, for Group No. 998, Nevada.

UNITED STATES DEPARTMENT OF THE INTERIOR  
BUREAU OF LAND MANAGEMENT

Reno, Nevada July 18, 2023

This plat is strictly conformable to the approved field notes, and the survey, having been correctly executed in accordance with the requirements of law and the regulations of this Bureau, is hereby accepted.

For the Director

*Michael O. Jones*

Chief Cadastral Surveyor for Nevada