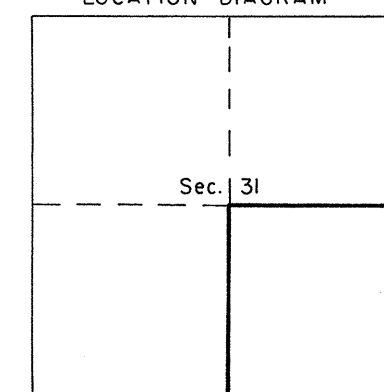


10:00 AM Nov 20, 1980

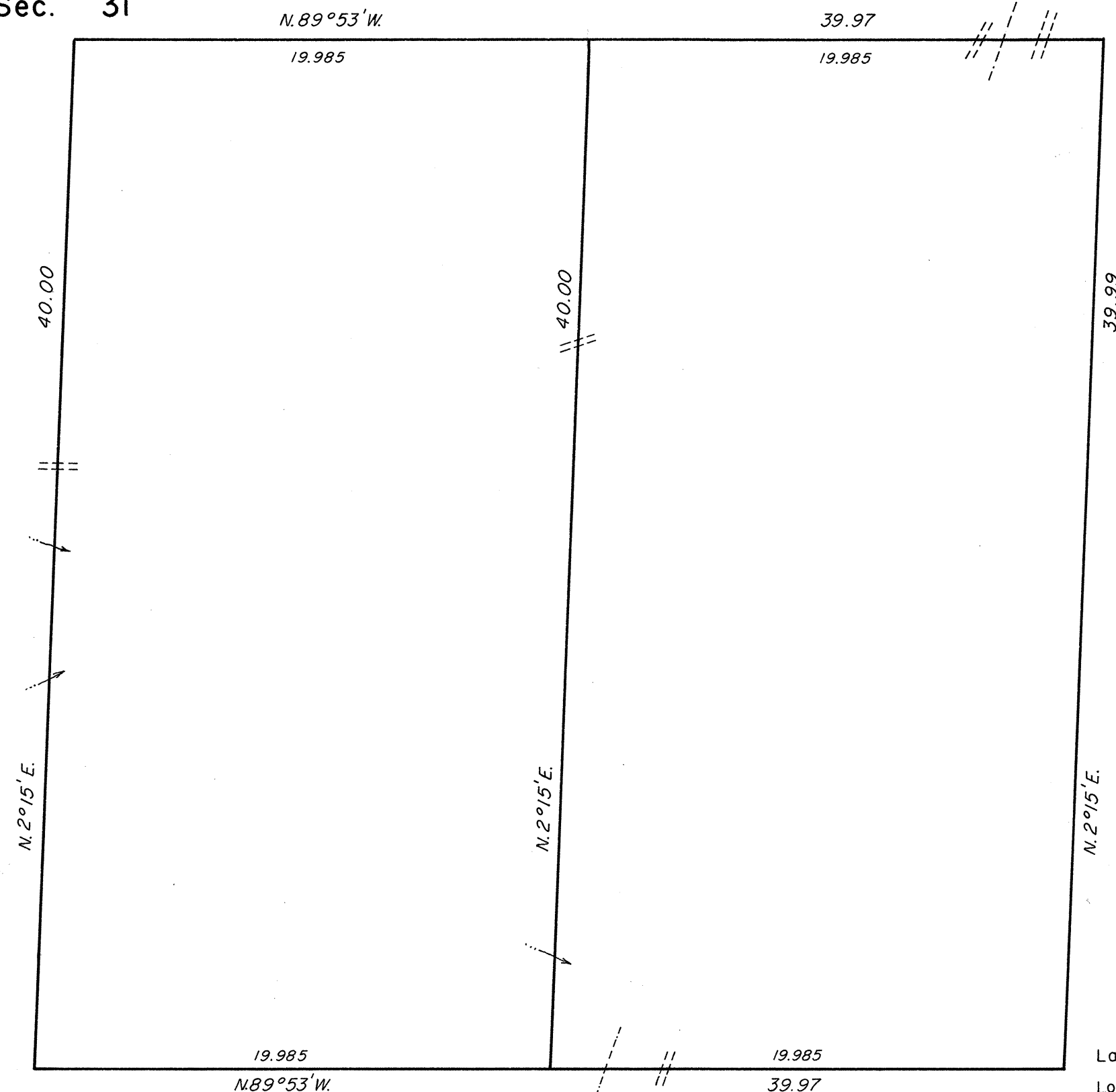
TOWNSHIP 28 NORTH, RANGE 58 EAST, OF THE MOUNT DIABLO MERIDIAN, NEVADA

RETRACEMENT AND SUBDIVISION

LOCATION DIAGRAM



Sec. 31



Latitude 40° 15.5' N.
Longitude 115° 28.2' W.

A history of surveys is contained in the field notes.

This plat represents the retracement of a portion of the subdivisional lines and the subdivision of section 31, T. 28 N., R. 58 E., Mount Diablo Meridian, Nevada.

A portion of the south boundary was concurrently resurveyed in T. 27 N., R. 58 E., of this assignment.

The lottings and areas are as shown on the plat approved March 29, 1870.

Survey executed by Terrence O. Nickerson, Cadastral Surveyor, beginning May 24, 1976, and completed May 27, 1976, pursuant to Special Instructions dated March 30, 1976, for Group No. 536, Nevada.

UNITED STATES DEPARTMENT OF THE INTERIOR
BUREAU OF LAND MANAGEMENT
Denver, Colorado October 21, 1980

This plat is strictly conformable to the approved field notes, and the survey, having been correctly executed in accordance with the requirements of law and the regulations of this Bureau, is hereby accepted.

For the Director

Allan Arnold

Acting Chief, Cadastral Survey
Examination and Approval Staff

