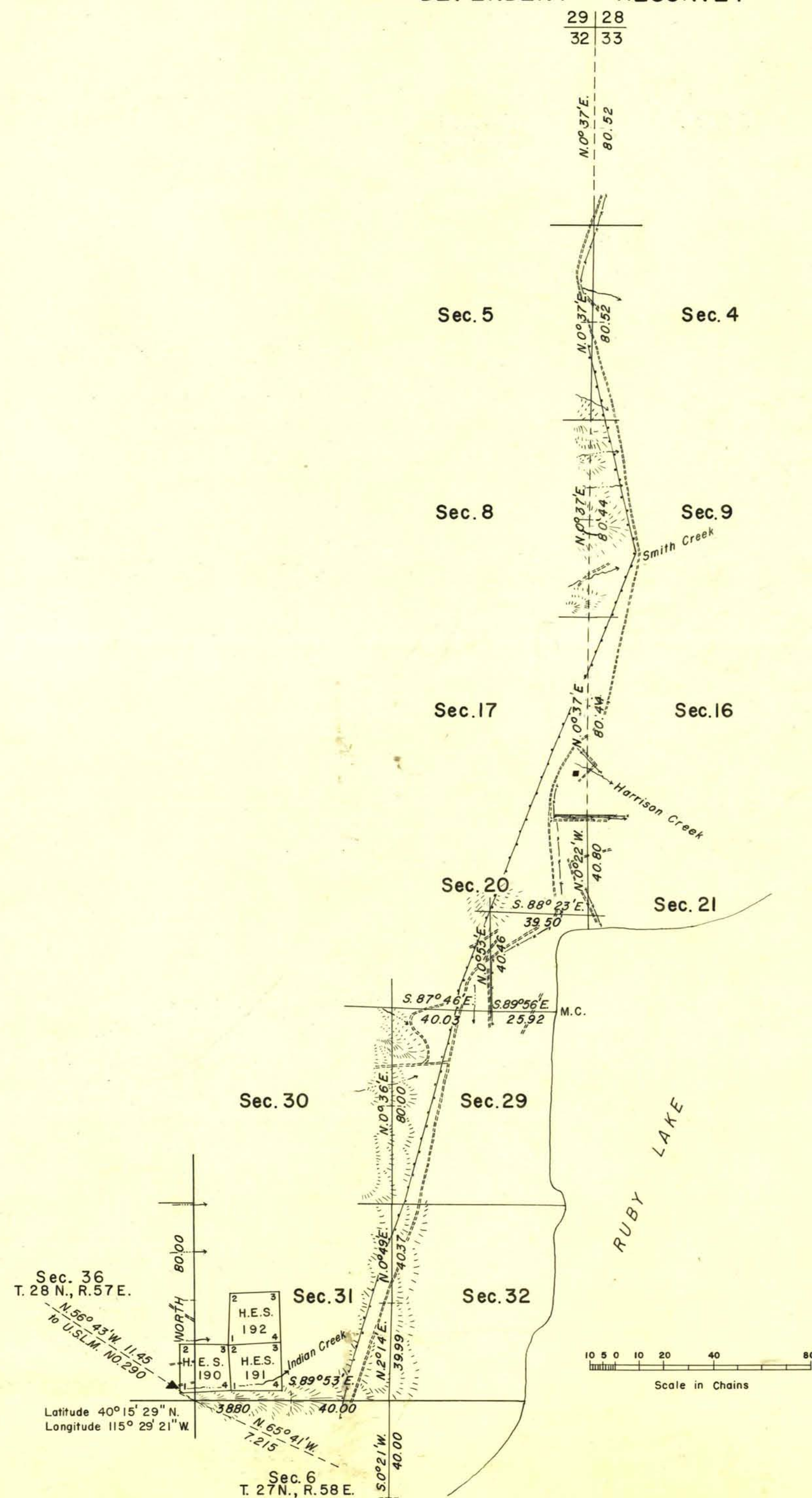


TOWNSHIP 28 NORTH, RANGE 58 EAST, MOUNT DIABLO MERIDIAN, NEVADA

DEPENDENT RESURVEY



History of earlier surveys is contained in the field notes.

This plat represents a dependent resurvey of a portion of the south boundary and a portion of the subdivisional lines of T. 28 N., R. 58 E., Mount Diablo Meridian, Nevada, designed to restore the corners in their original locations according to the best available evidence.

Survey executed by Emil Voigt and James W. Hardison, July 19 to September 1, 1944 under special instructions dated January 16, 1939, for Group 191, Nevada.

UNITED STATES DEPARTMENT OF THE INTERIOR
BUREAU OF LAND MANAGEMENT
Washington, D. C. November 8, 1956

This plat is strictly conformable to the approved field notes, and the survey, having been correctly executed in accordance with the requirements of law and the regulations of this Bureau, is hereby accepted.

For the Director

Carl G. Harrington

Cadastral Engineering Staff Officer

T28N, R58E.