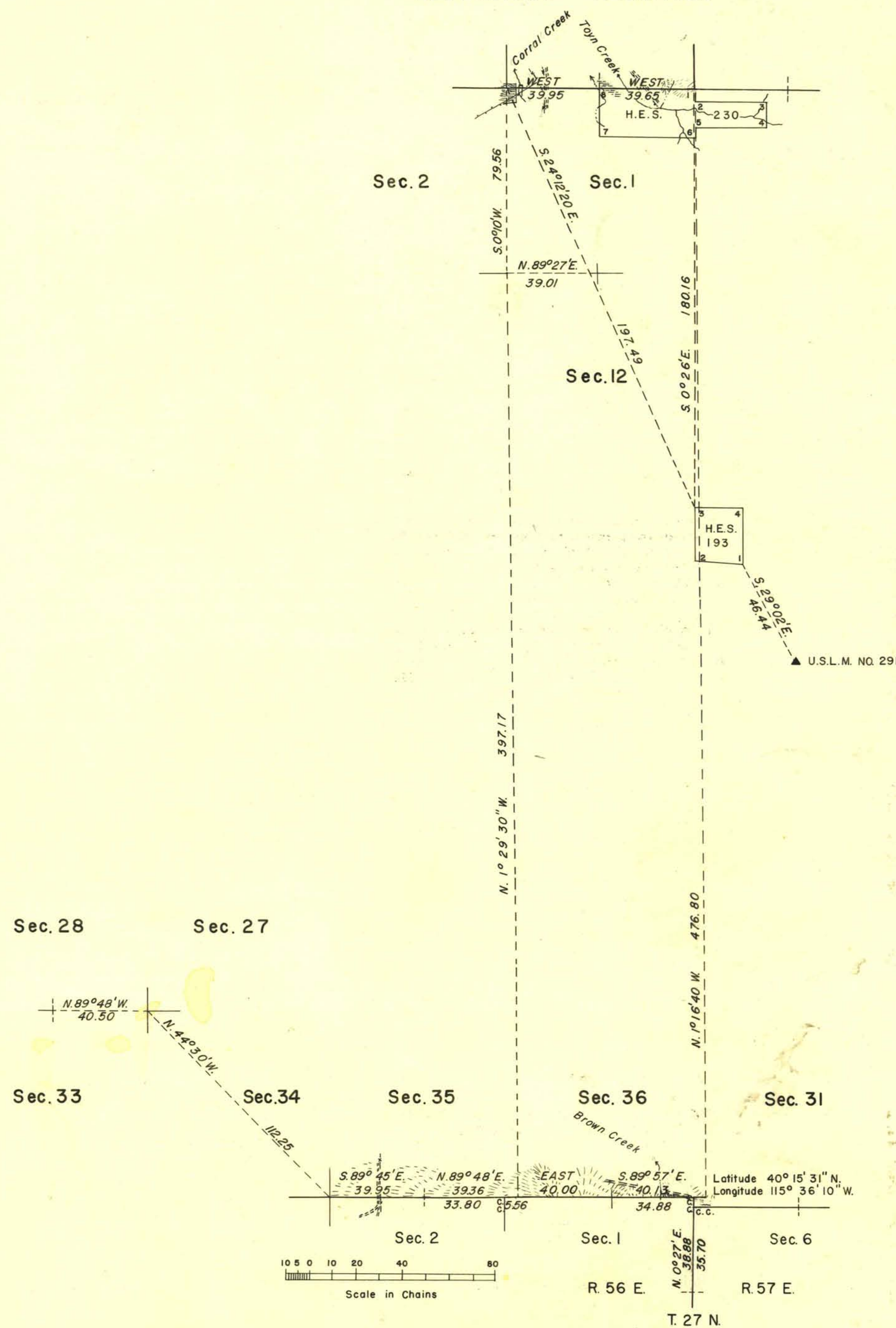


TOWNSHIP 28 NORTH, RANGE 56 EAST, MOUNT DIABLO MERIDIAN, NEVADA  
DEPENDENT RESURVEY



History of earlier surveys is contained in the field notes.

This plat represents a dependent resurvey of portions of the north and south boundaries of T. 28 N., R. 56 E., Mount Diablo Meridian, Nevada, designed to restore the corners in their original locations according to the best available evidence.

Survey executed by Emil Voigt and James W. Hardison, July 19 to September 1, 1944, under special instructions dated January 16, 1939, for Group 191, Nevada.

UNITED STATES DEPARTMENT OF THE INTERIOR  
BUREAU OF LAND MANAGEMENT  
Washington, D. C. November 8, 1956

This plat is strictly conformable to the approved field notes, and the survey, having been correctly executed in accordance with the requirements of law and the regulations of this Bureau, is hereby accepted.

For the Director

*Earl G. Harrington*  
Cadastral Engineering Staff Officer