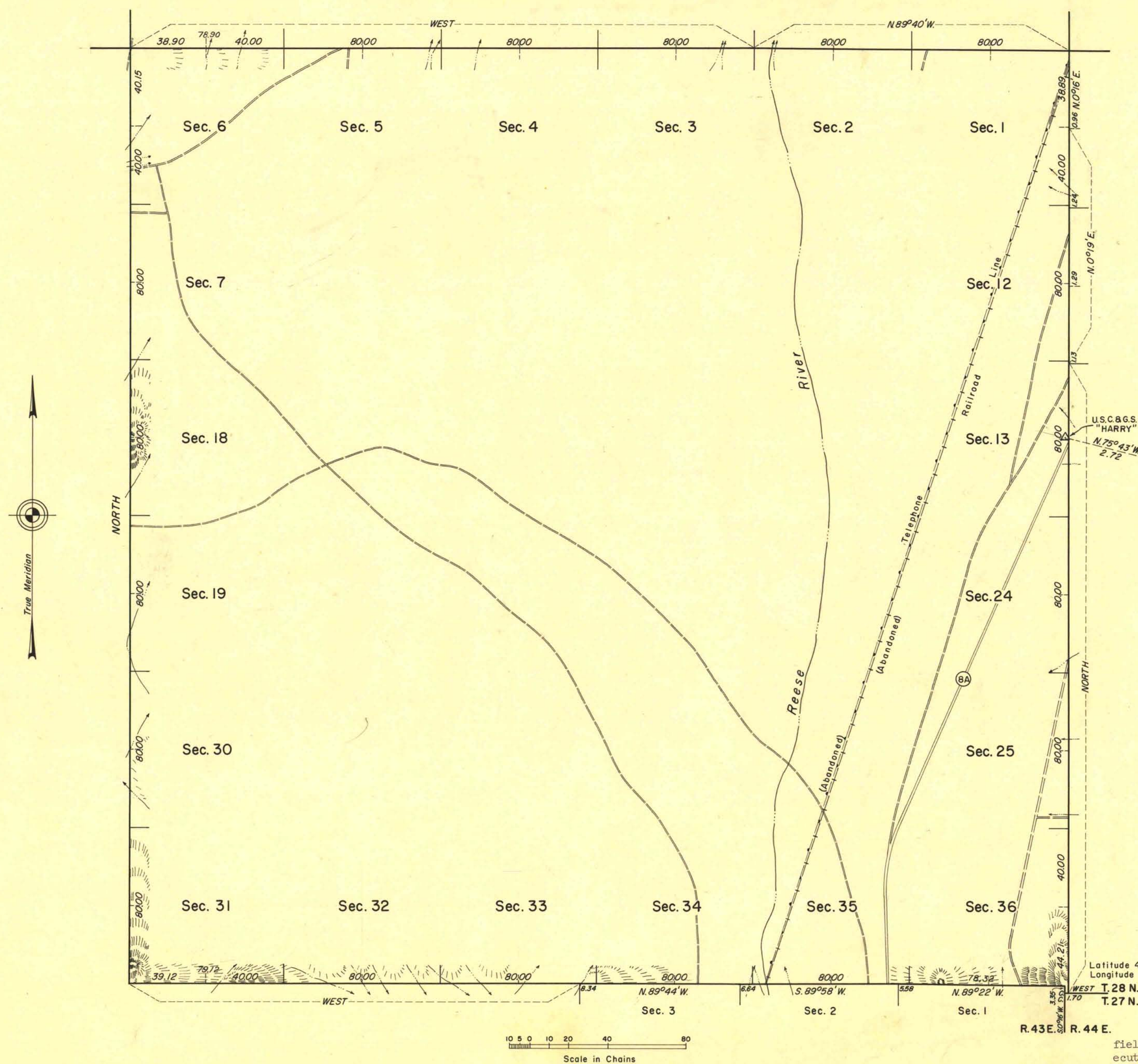


# TOWNSHIP 28 NORTH, RANGE 43 EAST, MOUNT DIABLO MERIDIAN, NEVADA

## RESURVEY AND SURVEY



This plat represents a retracement and re-establishment of portions of the south and west boundaries designed to restore all corners in their true, original locations according to the best available evidence, the independent resurvey of a portion of the east boundary and survey of the west boundary and a portion of the south boundary of T. 28 N., R. 43 E., Mount Diablo Meridian, Nevada.

As shown hereon the surveys and resurveys were executed by Woodrow H. Sylvester, from July 22 to July 31, 1959, under Special Instructions dated May 5, 1959, for Group 380, Nevada.

Latitude 40°14'47" N.  
Longitude 117°04'42" W.

UNITED STATES DEPARTMENT OF THE INTERIOR  
BUREAU OF LAND MANAGEMENT  
Washington, D.C. January 10, 1962  
R.43E. R.44E.

This plat is strictly conformable to the approved field notes, and the survey, having been correctly executed in accordance with the requirements of law and the regulations of this Bureau, is hereby accepted.

For the Director

*E. E. Pennington*  
Chief, Division of Engineering

1489-a

T28N, R43E