

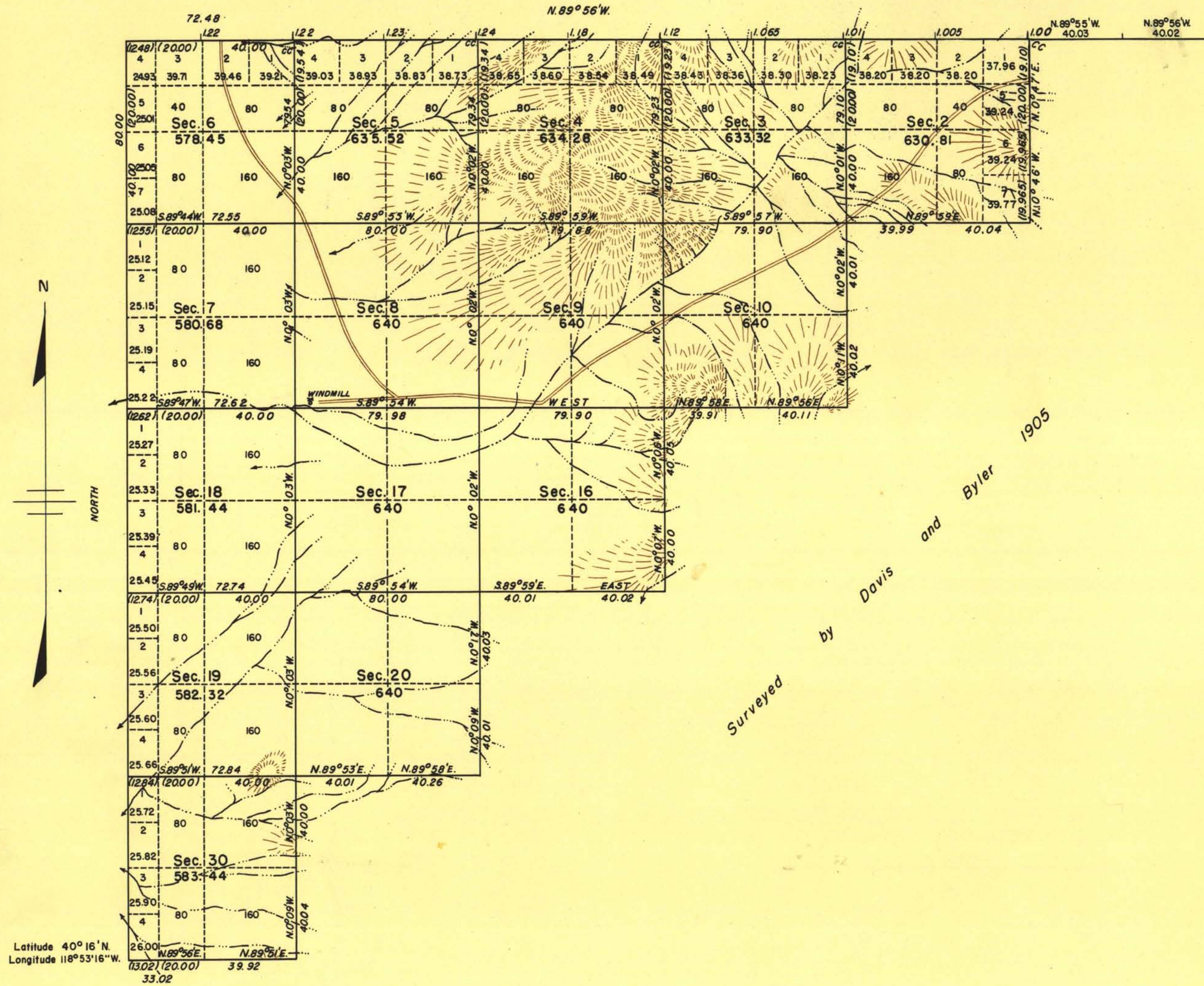
ORIGINAL

RECEIVED
LAND AND SURVEY OFFICE
RENO, NEVADA

MAR 9 - 1954

A.M. 7 8 9 10 11 12 P.M. 1 2 3 4 5 6

TOWNSHIP 28 NORTH, RANGE 28 EAST, MOUNT DIABLO MERIDIAN, NEVADA
COMPLETION SURVEY



UNITED STATES DEPARTMENT OF THE INTERIOR
BUREAU OF LAND MANAGEMENT
Washington, D. C., December 9, 1953

This plat is strictly conformable to the approved field notes, and the survey, having been correctly executed in accordance with the requirements of law and the regulations of this Bureau, is hereby accepted.

For the Director

Donald B. Clement

Acting Chief, Division of
Cadastral Engineering

Survey executed by Emil Voigt, Cadastral Engineer,
August 8 to 13, 1949, under Special Instructions for Group 210
Nevada, dated September 12, 1936.

T.28 N, R.28 E