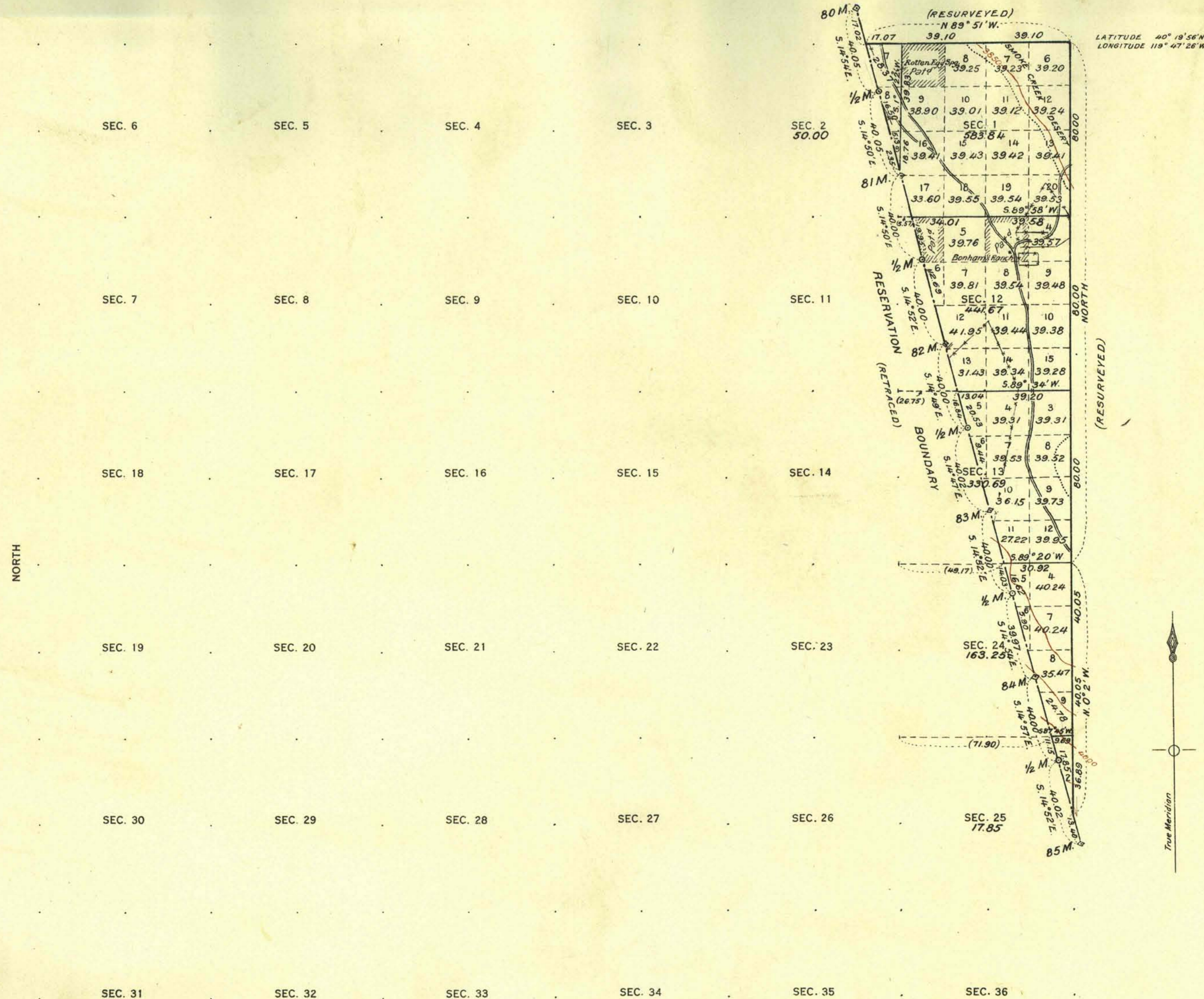


RESURVEY OF TOWNSHIP NO. 28 NORTH, RANGE NO. 19 EAST OF MOUNT DIABLO MERIDIAN, NEVADA.
PYRAMID LAKE INDIAN RESERVATION



Contour interval 50 feet.

Note: Curved lines or contours, are lines of equal elevation, and represent approximately the form of the earth's surface and the altitude above sea level.

Scale 40 Chains to an Inch

SURVEYS DESIGNATED	BY WHOM SURVEYED	AMOUNT OF SURVEYS M. CHS. LKS.	WHEN SURVEYED
STANDARD LINES	G. P. HARRINGTON	_____	SEPT. 11, 1911
TOWNSHIP	"	_____	" " "
SUBDIVISION	"	_____	" " "
MEANDER	"	_____	" " "
BOUNDARY	"	_____	AUG. 31, "
CONNECTIONS	"	_____	" " "

A. F. DUNNINGTON, Topographer in charge. Instructions April 27, 1911.

TOTAL NUMBER OF ACRES 1587.30

THE ABOVE MAP, OF TOWNSHIP NO. 28 NORTH, RANGE NO. 19 EAST OF MOUNT DIABLO MERIDIAN, NEVADA, IS STRICTLY CONFORMABLE TO THE FIELD NOTES OF THE SURVEY THEREOF ON FILE IN THIS OFFICE, WHICH HAVE BEEN EXAMINED AND APPROVED

U. S. GENERAL LAND OFFICE

WASHINGTON, D. C.
MAY 15, 1913.

John D. Smith
Commissioner.