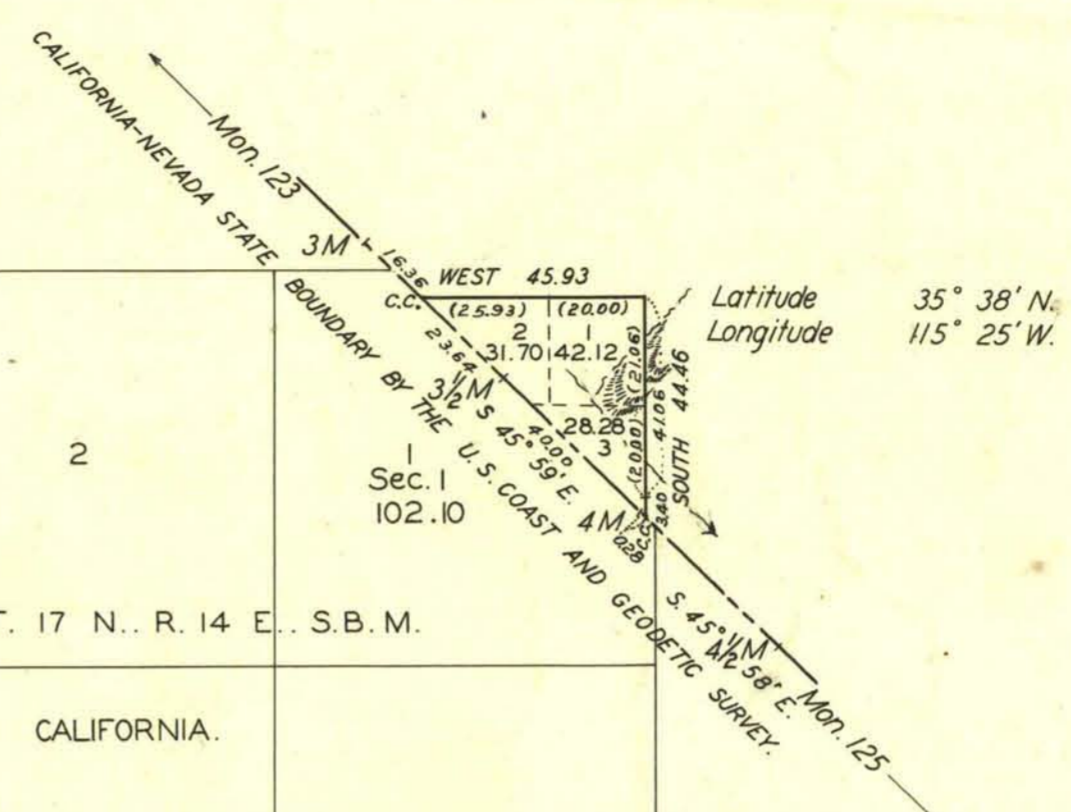
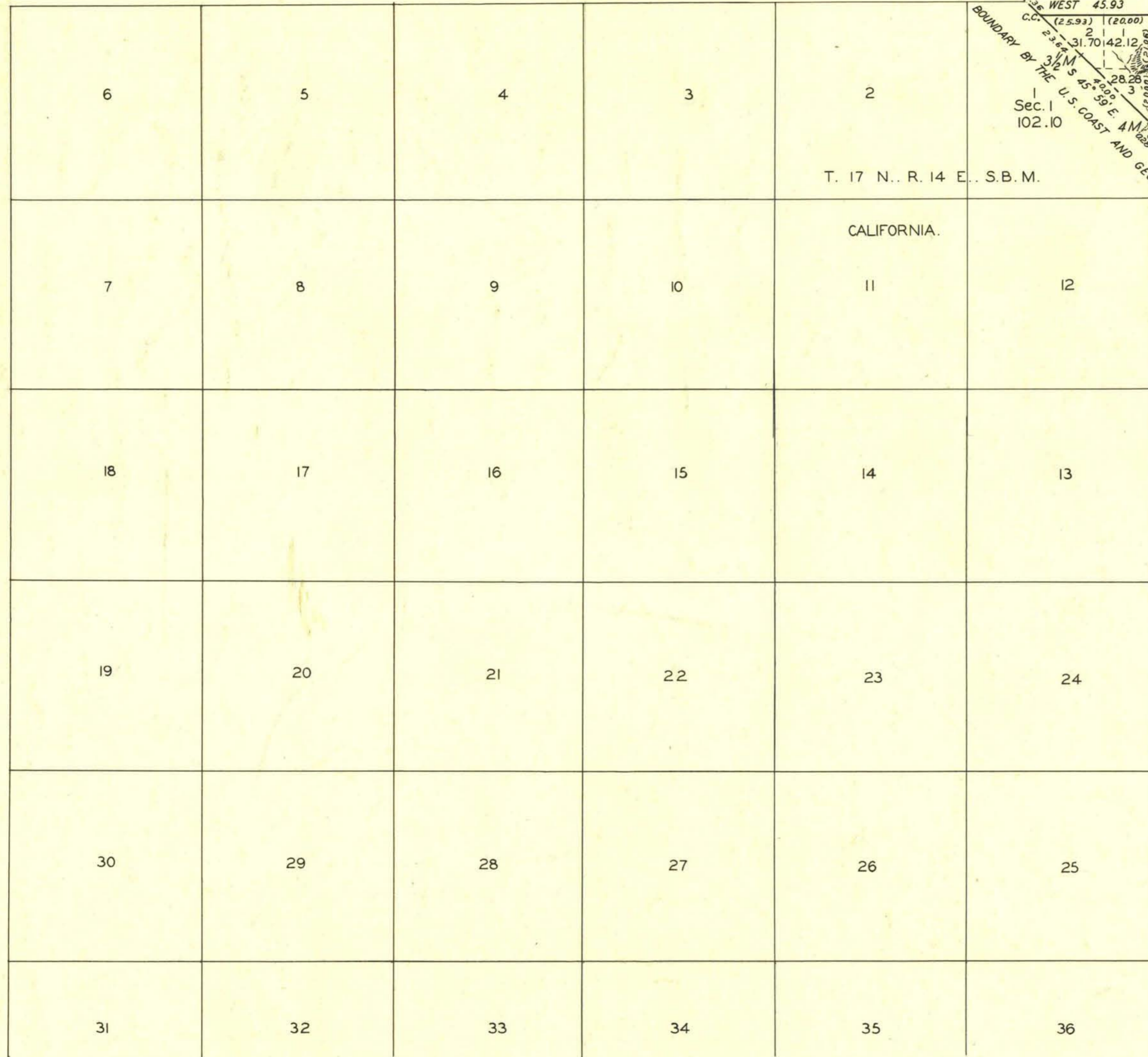


TOWNSHIP N° 27 SOUTH, RANGE N° 58 EAST, MOUNT DIABLO MERIDIAN, NEVADA.

FRACTIONAL.



Scale: 40 Chains to an Inch. Area Surveyed 102.10 Acres.

LINES DESIGNATED	BY WHOM SURVEYED	GROUP		MILEAGE		WHEN SURVEYED	
		N°	DATE	MLS.	CHS.	BEGUN	COMPLETED
EXTERIOR CONNECTION	ROGER F. WILSON	205 CALIF.	OCT. 11, 1927	45.93	16.36	MAY 18, 1932	MAY 18, 1932
W. BDY. N. "	W. H. MYRICK T. A. MAGEE					1883	1883

Q.B.T.

Office of U.S. Supervisor of Surveys  
 Denver, Colorado, August 28, 1933.  
 The above plat of Township No. 27 South, Range No. 58 East, of the Mount Diablo Meridian, Nevada, is strictly conformable to the field notes of the survey thereof which have been examined and approved.

*Wm. L. Pinner*  
 U.S. Supervisor of Surveys.

DEPARTMENT OF THE INTERIOR  
 GENERAL LAND OFFICE.  
 Washington, D.C., October 6, 1933.  
 The survey represented by this plat having been correctly executed in accordance with the requirements of law and the regulations of this office, is hereby accepted.

*Antoinette Pinner*  
 Assistant Commissioner.