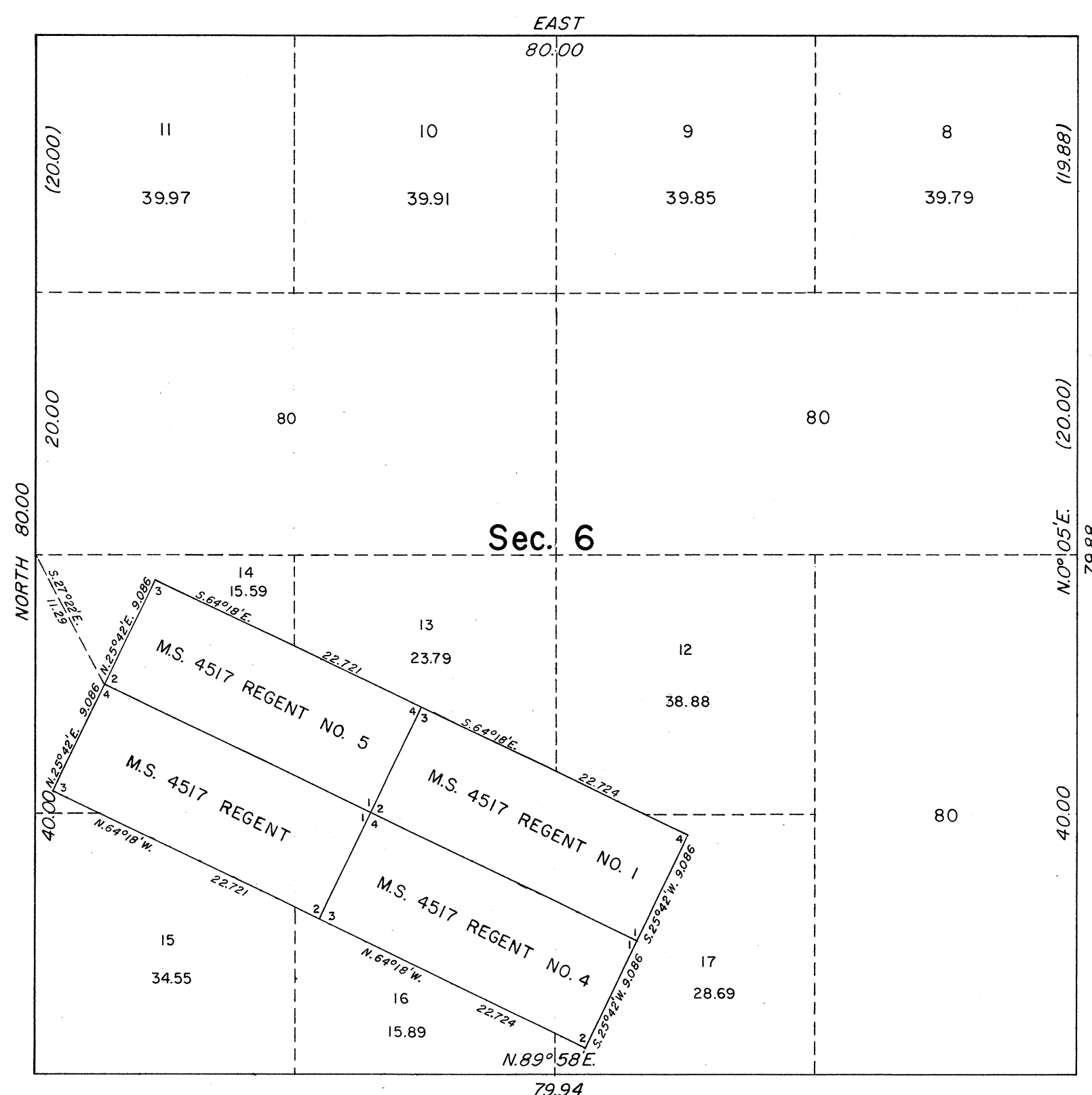
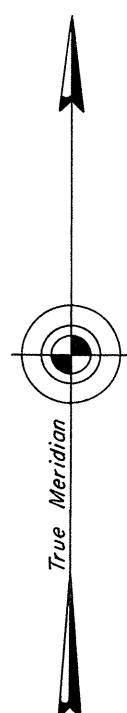


TOWNSHIP 27 NORTH, RANGE 70 EAST, OF THE MOUNT DIABLO MERIDIAN, NEVADA

ENLARGED DIAGRAM OF SEC. 6

OFFICIALLY FILED
NEVADA STATE OFFICE
10:00 a.m., July 5, 1974



Reference should be made to Sheet No. 1 for survey information.

Unless otherwise indicated in the field notes, all courses and distances, shown on the plat along the perimeter of the mineral segregation areas, were taken or computed from the appropriate mineral survey record.

UNITED STATES DEPARTMENT OF THE INTERIOR
BUREAU OF LAND MANAGEMENT
Washington, D.C. June 12, 1974

This plat is strictly conformable to the approved field notes, and the survey, having been correctly executed in accordance with the requirements of law and the regulations of this Bureau, is hereby accepted.

For the Director

Bernard W. Holroyd
Chief, Division of Cadastral Survey

