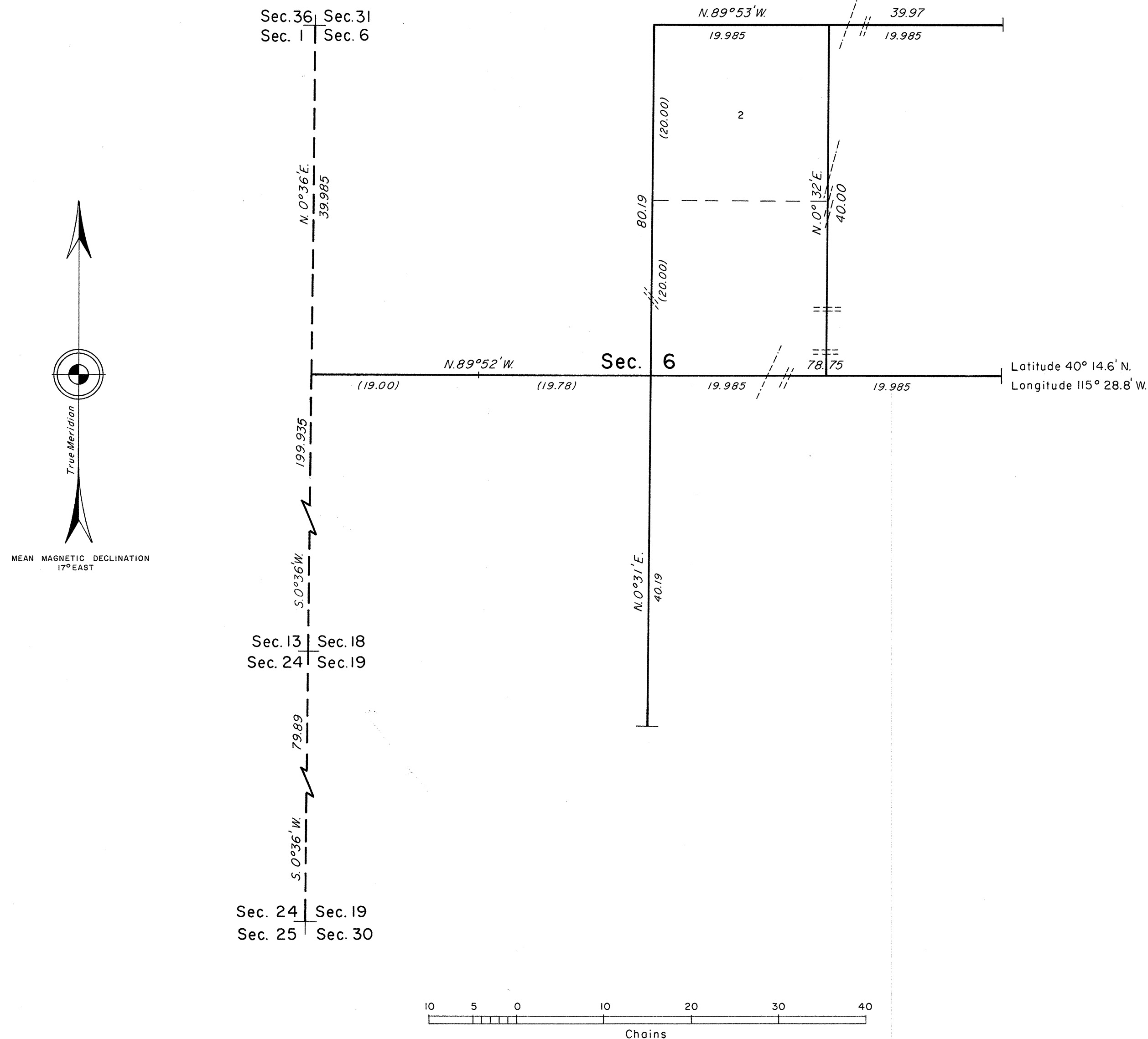


# TOWNSHIP 27 NORTH, RANGE 58 EAST, OF THE MOUNT DIABLO MERIDIAN, NEVADA

## DEPENDENT RESURVEY AND SUBDIVISION



A history of surveys is contained in the field notes.

This plat represents the dependent resurvey of a portion of the north boundary, designed to restore the corners in their true original locations according to the best available evidence, and the subdivision of section 6, T. 27 N., R. 58 E., Mount Diablo Meridian, Nevada.

The lottings and areas are as shown on the plat approved March 29, 1870.

Survey executed by Terrence O. Nickerson, Cadastral Surveyor, beginning May 24, 1976, and completed May 27, 1976, pursuant to Special Instructions dated March 30, 1976, for Group No. 536, Nevada.

UNITED STATES DEPARTMENT OF THE INTERIOR  
BUREAU OF LAND MANAGEMENT  
Denver, Colorado October 21, 1980

This plat is strictly conformable to the approved field notes, and the survey, having been correctly executed in accordance with the requirements of law and the regulations of this Bureau, is hereby accepted.

For the Director

*Alma Arnold*

Acting Chief, Cadastral Survey  
Examination and Approval Staff