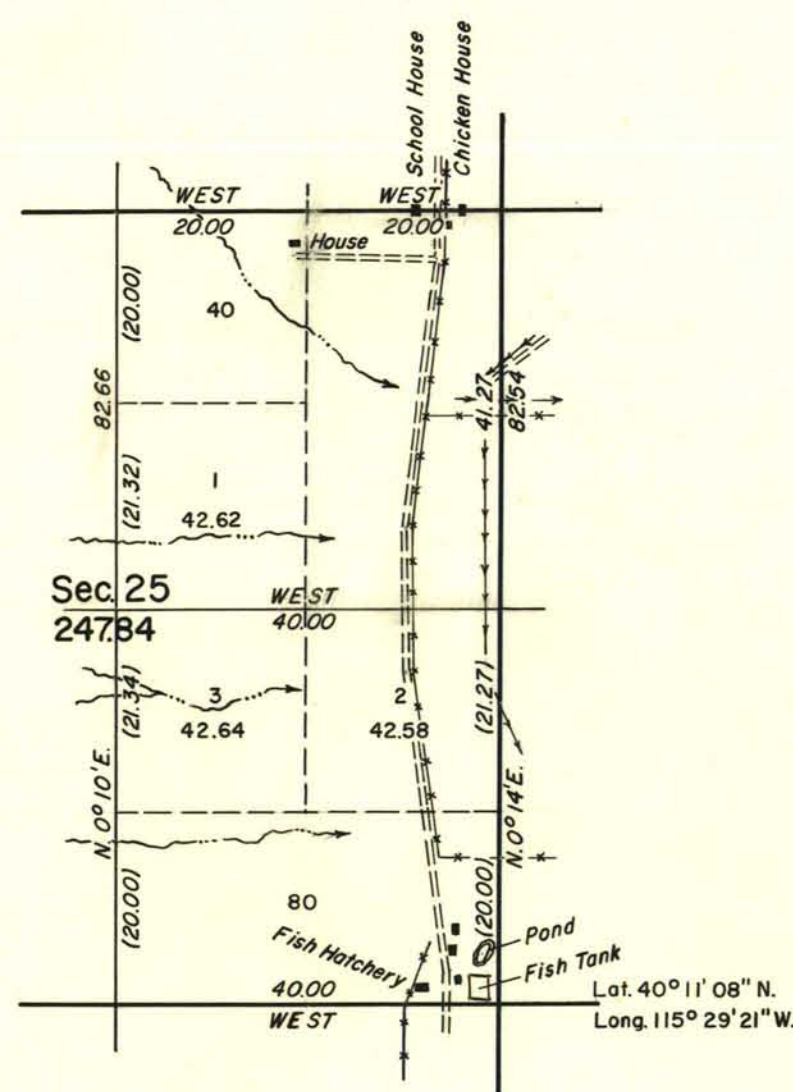
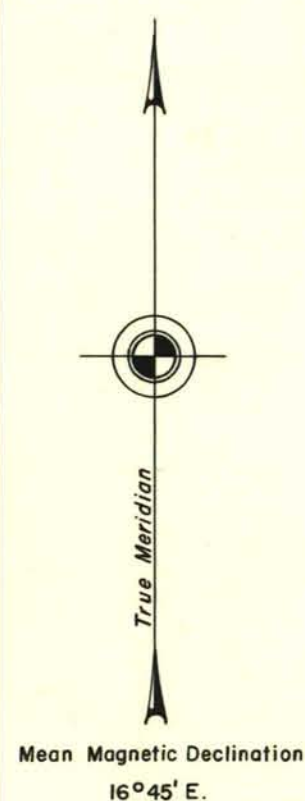


TOWNSHIP 27 NORTH, RANGE 57 EAST, OF THE MOUNT DIABLO MERIDIAN, NEVADA.  
COMPLETION SURVEY



Scale in Chains

Area resurveyed: 80.00 Acres  
Area surveyed: 247.84 Acres

This plat represents a dependent resurvey of the east boundary and the east 20.00 chains of the north boundary of section 25, designed to restore the corners in their true original locations according to the best available evidence and survey to complete the east half of section 25, in T. 27 N., R. 57 E., Mount Diablo Meridian, Nevada.

History of previous surveys is set forth in the field note record.

Surveys and resurveys shown hereon were executed by DeWitt A. Crain from June 12 to June 18, 1959, under special instructions dated April 6, 1959, for Group 377, Nevada.

UNITED STATES DEPARTMENT OF THE INTERIOR  
BUREAU OF LAND MANAGEMENT  
Washington, D.C. January 17, 1962

This plat is strictly conformable to the approved field notes, and the survey, having been correctly executed in accordance with the requirements of law and the regulations of this Bureau, is hereby accepted.

For the Director

*E. L. Huntington*  
Chief, Division of Engineering